

 **AAG** 亞鋁

 **AAG**

**ASIA  
ALUMINUM**  
AN 简介  
**INTRODUCTION**

肇庆亚洲铝厂有限公司  
ZHAOQING ASIA ALUMINUM FACTORY CO.,LTD  
肇庆新亚铝铝业有限公司  
ZHAOQING NEW ASIA ALUMINUM CO.,LTD

中国广东省肇庆市大旺高新技术产业开发区亚铝工业城  
Asiaalum Industrial City, High-tech Industrial Development  
Zone, Zhaoqing, Guangdong, PRC.

邮 编 / 526238      电 话 / (0758) 6928524  
服务热线 / 400-1261-268      传 真 / (0758) 6928860  
电 邮 / extrusion@asiaalumgroup.com



微信公众号

600,000<sup>t</sup>

年产能(吨)  
Annual Production

Located in Asia Aluminum Industrial City, Dawang New Hi-Tech Development Zone, Zhaoqing City of Guangdong Province, Asia Aluminum is one of the largest aluminum profile manufacturers with the most sophisticated production facilities in the world. Since its establishment in 1990, the company has been dedicated to the design and manufacturing of advanced high-precision aluminum profiles. Asia Aluminum's profiles can be applied to building use, such as windows, doors, and curtain walls, and also for industrial use, such as aviation, rail transportation, automobile, electronics, communication technology etc. Asia Aluminum invested numerous new, advanced automated equipment for mould creation, extrusion and surface treatment to ensure product quality and productivity. The company's production capacity exceeds 600,000 tons per year, playing a leading role in the industry.

Asia Aluminum, with its outstanding team, advanced technology, and stringent quality control, satisfies customers' demand for high-quality aluminum profiles within the shortest production cycle. Asia Aluminum has received numerous honors for its product quality and all-round service. In 2005, the company acquired TS16949 and DNV certification, becoming one of the earliest enterprises to adopt international advanced standards.

The company's products are used in many landmark buildings such as the Burj Khalifa, Burj Al Arab, Lusail Stadium, National Olympic Stadium (known as "Bird's Nest"), and Beijing Capital International Airport.

Looking into the future, with pioneering spirit and customer-first philosophy, Asia Aluminum will continuously strive to provide exemplar products and first-class service to all.

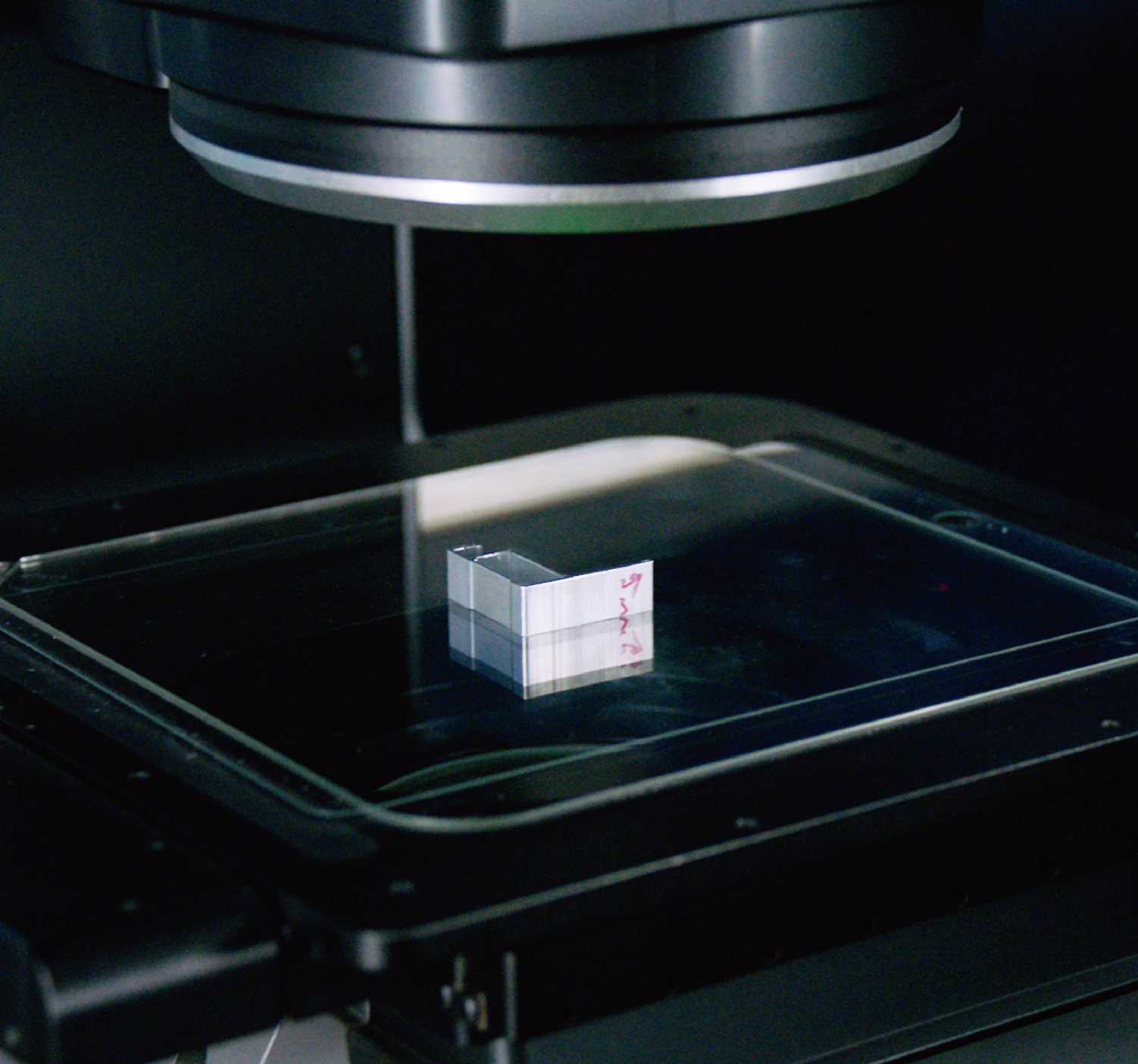
AAG亚铝座落于广东省肇庆大旺国家高新技术产业开发区亚铝工业城，是全球规模化、装备精良的铝型材制造商之一。自1990年成立以来，公司一直致力于高、精、尖铝挤压型材的设计与制造，通过多年以来的不懈努力和坚持，产品由单一的建筑门窗、幕墙类铝型材拓展到包括各类工业型材、航天航空、轨道交通、汽车制造、电子电器、通讯科技、IT等多种领域，AAG亚铝产品在世界各地深受欢迎。随着企业的不断发展与壮大，为保证产品质量与生产效率，公司斥巨资更新和增加了多条从模具到挤压直至表面处理的进口自动化设备，年生产能力跃超过60万吨，一举成为行业内的领军企业。

AAG亚铝凭借一支优秀的领导团队、高素质的员工队伍、现代化的管理模式、出色的工艺技术、科学的生产流程控制以及严格的质量检验检测，能在较短的生产周期内满足客户对高质量铝型材产品的需求。其稳定的产品质量和全

方位的售后服务，赢得了无数赞誉，并树立了以迪拜塔、帆船酒店、鸟巢、水立方和国家大剧院等为代表的一大批地标性建筑。

杰出的产品质量和优秀的企业管理也为亚铝赢得了从地方到国家再到国际的各种奖项。2005年起，公司顺利通过TS16949汽车型材体系认证、DNV船级社认证等，成为铝型材行业内较早采用国际先进标准的企业之一。同时，拥有的“南亚”牌商标曾被认定为“中国驰名商标”，“AAG亚铝”品牌也多次获得“中国铝型材十强”、“行业十大首选品牌”等荣誉称号。

展望未来，AAG亚铝将继续在“开拓进取，勇攀高峰”的企业精神指导下，在“以人为本，相互尊重，讲究诚信，承担责任”的企业理念引领下，载着荣誉，带着责任，力求以更优质的产品和更周到的服务回馈于广大客户和社会。



## R&D TEAM

Innovation of new products is at our core. The research and development team at Asia Aluminum focuses not only on product development, but also pays close attention to user experience, integration of creative design and pursuance of innovation. We tap top talents from different disciplines and backgrounds, which together constitute the most dynamic professional force, leading Asia Aluminum ahead to meet the global demand for premium extrusion products. Our R&D team keeps providing technical upgrades, and offers customers professional consultation and technical service.

## 研发团队

新产品开发日益成为企业成功经营的核心。亚铝研发团队注重产品开发、用户体验和融入创意设计以及不断追求创新。广招不同范畴、不同文化背景的专业人员，汇聚了众多国内外资深行业专家，成为业界资深的研发团队。在提供领导时代的高精铝型材产品，并不断进行技术创新，为客户提供专业咨询和技术服务。

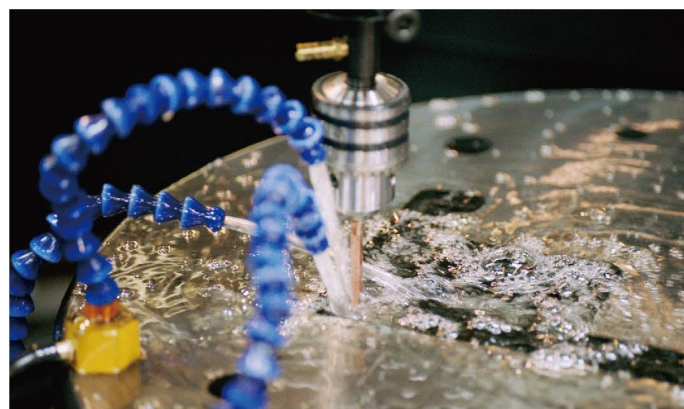




## MOLD CENTER 模具中心

亚铝深知模具对产品生产的重要性，模具中心配备世界最先进的模具设计及生产设施。

Asia Aluminum values the importance of molds on production, its mold center is equipped with the world's most advanced facilities for design and production.



世界最先进的模具设计及生产设施

The World's Most Advanced Facilities for Design and Production.

× 41

CNC线切割机 (台)  
CNC Wire Cut Machines

× 41

CNC加工中心 (台)  
CNC Processing Units

× 59

CNC电火花机 (台)  
CNC EDMs

× 9

CNC数控车床 (台)  
CNC Lathes

× 4

热处理真空炉 (台)  
Vacuum Heat  
Treatment Furnaces



0.005-0.01mm

切割型材设计尺寸精度可达  
Cutting Profile Design Dimension Accuracy Can Reach

>46,000 sets

年产能 (套)  
Annual Mold Production



## EXTRUSION PRODUCTION LINES 挤压生产线

亚铝拥有当代先进的生产设备，能在较短的生产周期内制造出精良优质的铝型材产品。

Asia Aluminum possesses world-class equipment capable of making the most delicate extruded products within the shortest production time frame.

# 58

挤压生产线(条)  
Extrusion Lines

亚铝装备58条挤压生产线。采用意大利进口全自动生产线及冷却系统，出料口温度全部采用红外线监控；年生产能力可达60万吨以上。

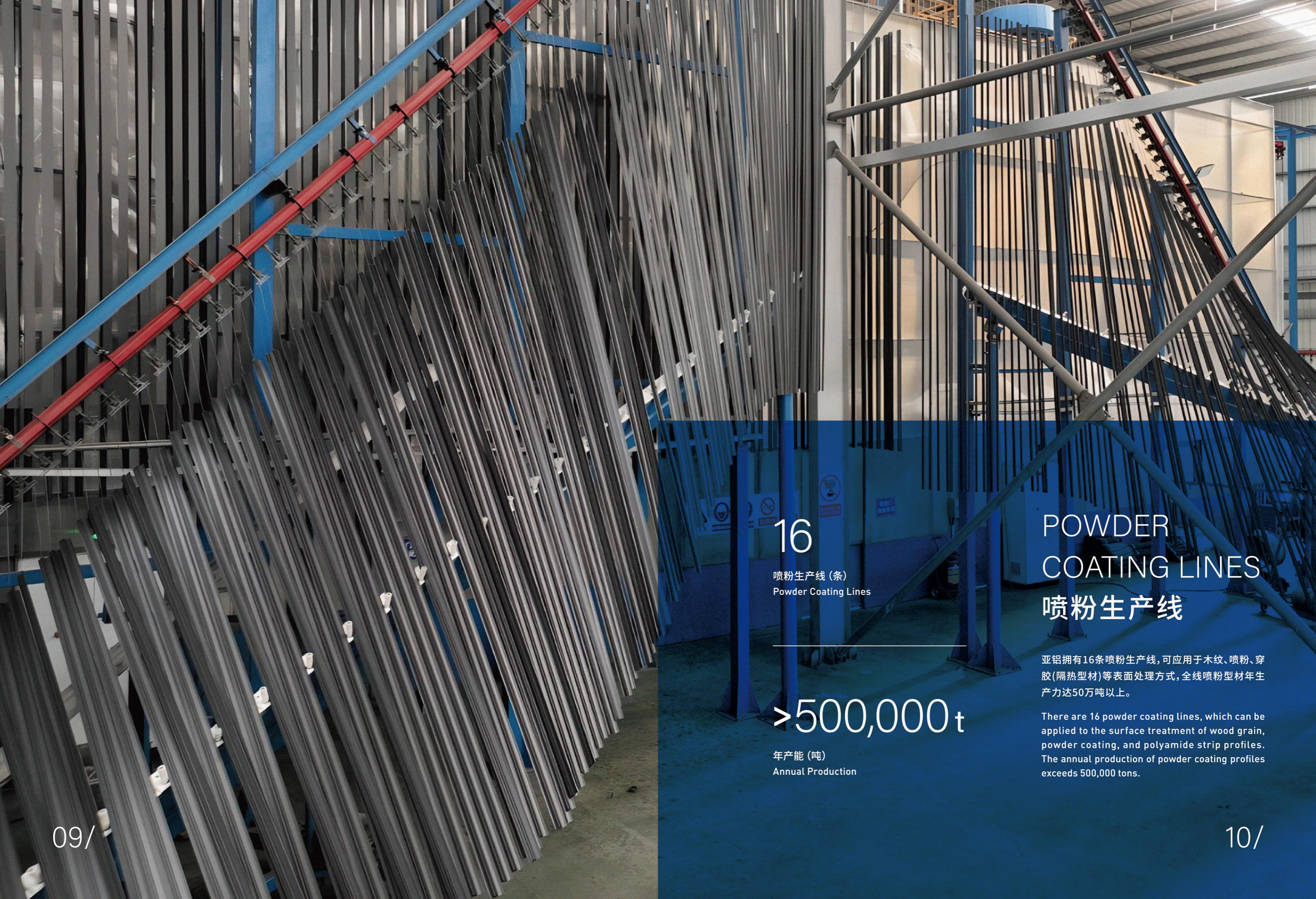
亚铝无论在产能或技术水平方面，一直担当着国内铝型材行业创新及领先角色。

Asia Aluminum is equipped with 58 extrusion production lines. With automatic production lines and cooling systems imported from Italy and infrared device imported from USA monitoring outlet temperature. The annual production capability of extrusion lines exceeds 600,000 tons.

Since its establishment, Asia Aluminum has played the leading role in the extrusion industry by scale, technology and quality.

# >600,000 t

年产能(吨)  
Annual Production



16

喷粉生产线(条)  
Powder Coating Lines

>500,000 t

年产能(吨)  
Annual Production

## POWDER COATING LINES 喷粉生产线

亚铝拥有16条喷粉生产线,可应用于木纹、喷粉、穿胶(隔热型材)等表面处理方式,全线喷粉型材年生产力达50万吨以上。

There are 16 powder coating lines, which can be applied to the surface treatment of wood grain, powder coating, and polyamide strip profiles. The annual production of powder coating profiles exceeds 500,000 tons.



SPRAY  
COATING LINES  
喷涂生产线

2

卧式喷涂生产线 (条)  
Horizontal  
Spray Production Lines

4

立式喷涂生产线 (条)  
Vertical Spray  
Production Lines

>150,000 t

年产能 (吨)  
Annual Production

25

穿胶机 (台)  
Polyamide Strip  
Threading Machines

2

注胶机 (台)  
Glue Injection  
Machines

亚铝拥有2条卧式喷涂生产线、4条立式喷漆生产线、注胶机2台、穿胶机25台。最长可喷长达12米的铝型材，全线喷涂型材年生产力可达15万吨以上。

Asia Aluminum possesses 2 sets of horizontal spray production lines, 4 sets of vertical spray production lines, 2 sets of glue injection machines, and 25 sets of polyamide strip threading machines. The longest spraying aluminum profile can reach 12 meters. The annual production of spraying lines exceeds 150,000 tons.



# ANODIC OXIDATION LINES 氧化生产线

1

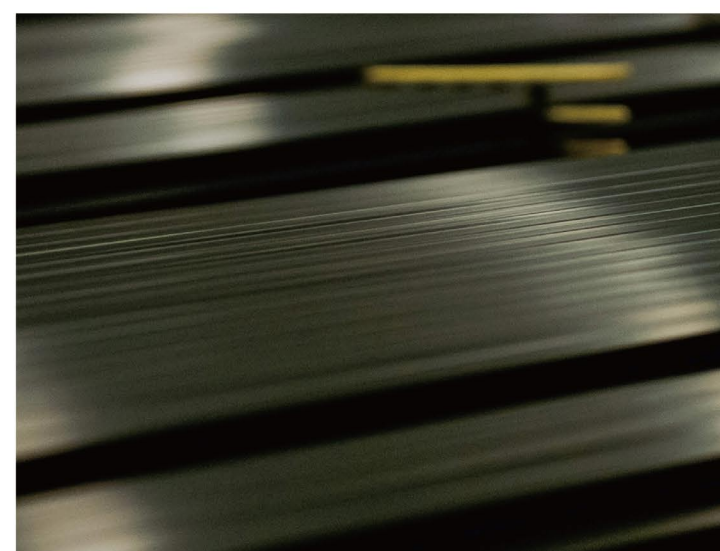
卧式氧化生产线(条)  
Horizontal  
Oxidation Line

1

全自动立式氧化  
生产线(条)  
Automatic Vertical  
Oxidation Line

>100,000t

年产能(吨)  
Annual Production



亚铝拥有1条卧式氧化生产线和1条全自动立式氧化生产线,年生产能力提升至10万吨以上。设备的高、强、尖特点是其拥有国际品质的保证。完善的装置和全线流程的优化让产品的特性更稳定,产品的表面更具有优秀的理化指标。

Asia Aluminum possesses one automatic horizontal oxidation line, and one vertical oxidation line. The annual production of oxidation lines exceeds 100,000 tons. All-round facilities and optimized production process provides our customers with superior and stable surface treatments.





## ERP SYSTEM 企业资源管理系统

亚铝的企业资源管理系统(ERP), 目标是以市场和客户需求为导向, 实行企业内外资源优化配置, 实现资讯流、物流、业务流集成。亚铝拥有最先进的生产管理系统(MES), 为公司智能化生产提供高效、可靠的技术平台。此系统成功令数据库管理系统全面整合统一, 并增加产物管理及数据追踪效率。

Asia Aluminum's Enterprise Resource Planning system plays an integral role in the company. Our management system creates an optimized and interconnected workflow to provide customers with timely and excellent service. Asia Aluminum uses the most advanced Manufacturing Execution System in the industry, realizing an intelligent and automatic production process. Our comprehensive information systems together offer real-time production and data tracking, resulting in an accurate and efficient production process.

## QUALITY CONTROL 品质监控

亚铝所有产品均经过严格的检定。每个部门均拥有独立的自我检定系统, 先进的实验室及测试仪器, 对每件原材料及产品进行全方面的物理及化学分析及测试, 精确可靠。在生产动态的操控方面, 现场质量检测分析让质量在动态中受控, 为及时发现问题, 解决问题和收集相关产品数据提供高度实时动态的反馈方式。

All products of Asia Aluminum follow a strict quality control system to meet international standards. Full scale testing and inspection are conducted on every product through precise physical and chemical tests with our advanced equipment and laboratories. In production, dynamic quality control is realized by on-site inspection, providing timely information and statistics for identifying and solving problems.

国家CNAS  
认可技术检测中心  
National CNAS  
Recognized Testing  
Center

Q-FOG  
盐雾试验机  
Q-fog  
Cyclic Corrosion  
Tester

理化实验室  
Physical And  
Chemical  
Laboratory

高低温交  
变湿热试验箱  
Programmable  
Temperature  
and Humidity  
Chamber

实时  
报道管理系统  
Real-time Product  
Information  
System

电子  
排产信息系统  
Digital Production  
Scheduling  
Information  
System



# ENTERPRISE QUALIFICATION 企业资质

亚铝凭籍科学的管理及不断的科技和人才投入，在行业中日益突显其领导者地位。得到了众多权威机构和组织对公司管理及产品的认证和肯定，历年来荣获了：

Asia Aluminum has received numerous awards and certifications from authoritative agencies and organizations worldwide:

## 荣誉证书 HONORARY CERTIFICATE



**中国铝型材十大品牌**  
Top 10 Brands Of Aluminum Profiles In China

**中国房地产500强首选供应商**  
China's Top 500 Preferred Suppliers

**广东省重点商标保护名录**  
Guangdong Province Key Protected Trademark

**建筑型材十大首选品牌**  
Top Ten Preferred Brands Of Architectural Profiles

**中国房地产工程采购推荐使用品牌**  
Recommended Brands For Real Estate Project Purchasing

## 资质证书 QUALIFICATION CERTIFICATE



**国际质量管理体系认证**  
BSI Certification

**国际环境管理体系认证**  
CQM Environmental Management System Certification

**节能产品认证**  
Energy-saving Product Certification

**QUALANOD认证**  
Qualanod Certification

**国际能源管理体系认证**  
CQM Energy Management System Certification

**低碳产品认证**  
Low Carbon Product Certification

**QUALICOAT认证**  
Qualicoat Certification

**产品质量认证**  
Product Quality Certification

# 产品介绍

## PRODUCTS



型材品种丰富, 各种拼接转角材料配套齐全, 门窗系列均严格遵循相关国家标准要求设计和生产。并可根据客户工程的需要, 配合用户共同研发新型的铝合金工程门窗产品。

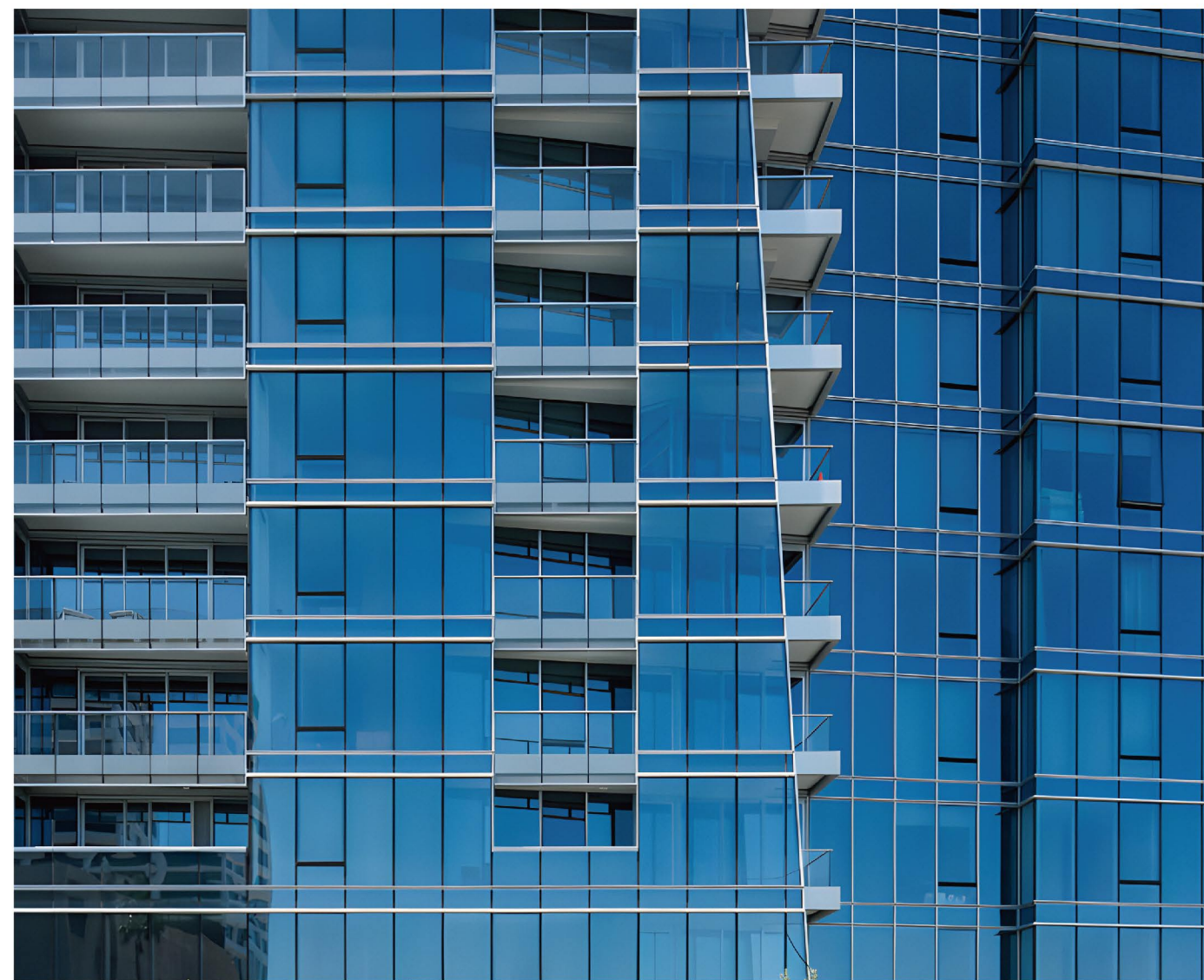
We have a large variety of profiles and complete coupling auxiliary products, all strictly following relevant national standards. Asia Aluminum develops new aluminum door and window products with our customers to meet engineering requirements.

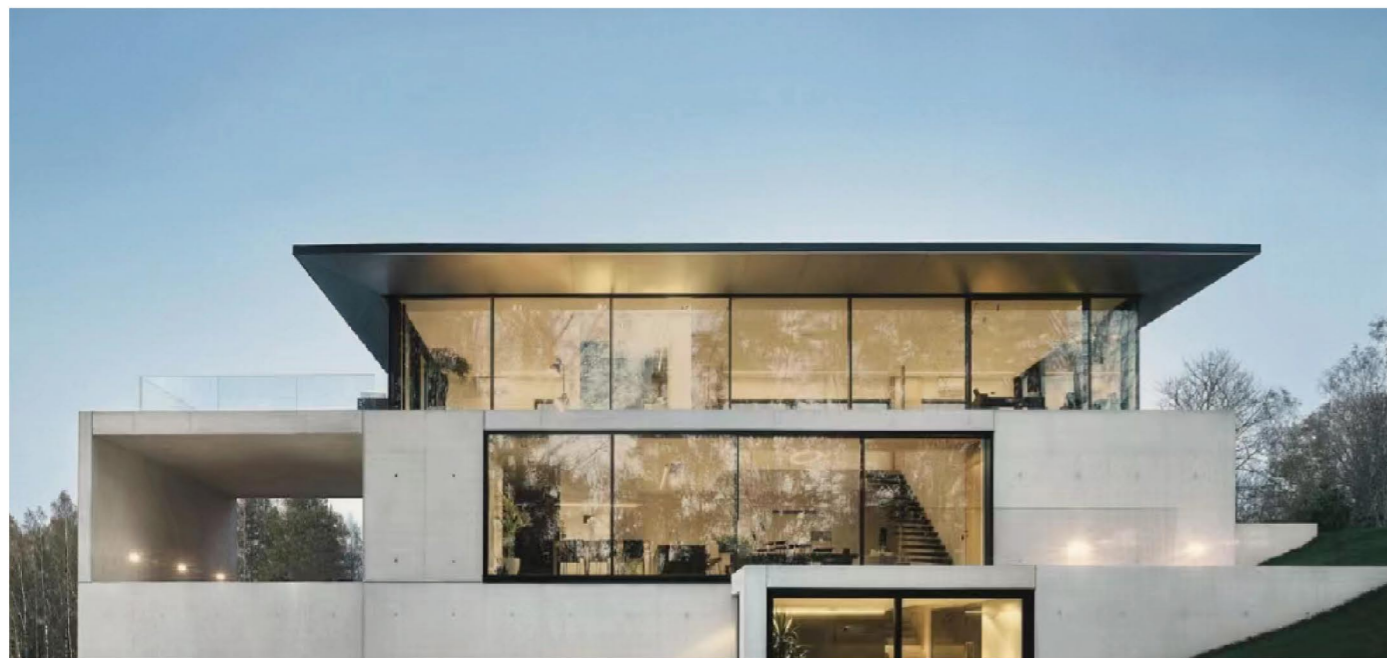
## DOOR & WINDOW SERIES

### 通用门窗系列

亚铝根据各地区要求和实用情况, 生产了众多适用于不同地区的断桥和非断桥的工程通用门窗系列产品:

Based on regional requirements and practical situations, Asia Aluminum produces numerous door and window series applicable to various projects with broken and non-broken bridge products.





## AAG Duran System 杜朗系统门窗

亚铝在建材行业取得至高地位。2022年，更进一步投入到门窗系统研发、推广、供应行列。联合国内知名系统公司以及门窗零售行业巨头，结合国内工程市场特点，推出跨时代系统产品—亚铝杜朗系统门窗。

In 2022, AAG further invested in the development, promotion, and supply of door and window systems. With well-known door and window system companies and retail industry giants, AAG launched an innovative door and window system - AAG Duran System.

### DLine-N


#### 设定铝合金窗隔热新标准 A New Standard For Heat Insulation For Aluminum Windows



- 隔热填充物降低对流，减少能量流失，提供完美隔热性能。  
Optimized filler reduces convection and energy loss, providing remarkable insulation performance.
- 75mm可视面达到被动窗的性能，更多光照、更舒适居住体验。  
The window's visible width of 75mm reaches an equivalent performance of passive house windows, bringing more sunlight into the room.
- 超轻发泡+发泡复合胶条，更大压缩变形量，提高隔热性、气密性及水密性。  
Ultralight foaming and composite strips provide greater compression deformation, with increased performance in thermal insulation, air and water tightness.

### DLine-W

#### 开创铝合金外开窗水密新标准 A New Standard For Waterproofing For Outward Opening Swing Aluminum Windows



- 33mm可视面完成传统65mm宽的完整功能。  
The window's visible width of 33mm has equivalent functions of that traditional visible width of 65mm.
- 创造性的将五金放到室内侧，完美解决外开窗的安全问题。  
Innovation on accessories installation on the interior solves safety issues on outward opening windows.
- 内外10mm阶差及等压胶条带来超越传统结构的超高水密性。  
Interior and exterior difference of 10mm isobar strips yields superior performance in waterproofing.

### DSim-T

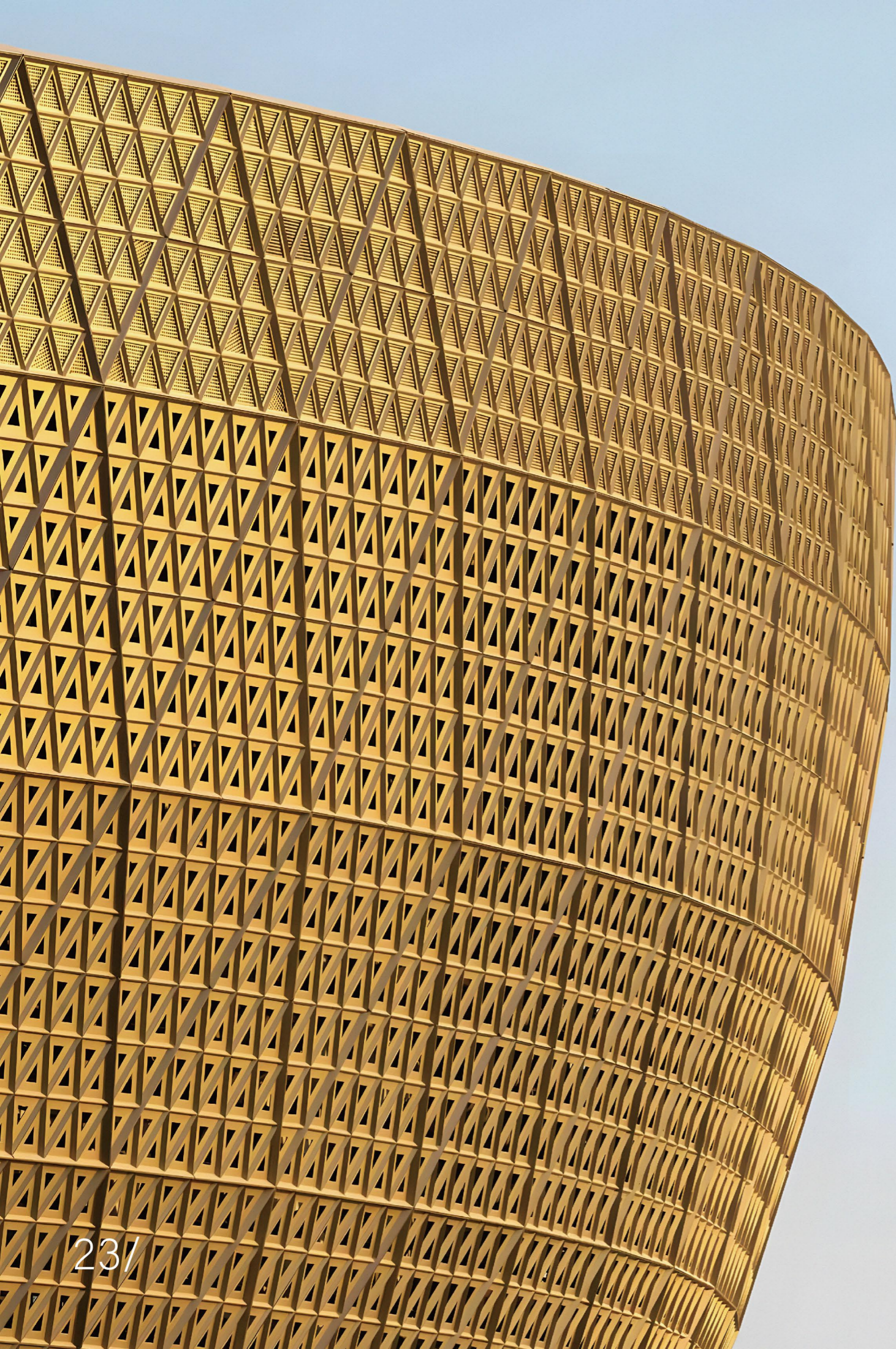
#### 开创提升推拉门密封新标准 A New Standard For Sealing In Lift and Slide Doors



**外观 Appearance**  
38毫米勾企，纤细简洁，符合现代简约内装风格。  
38mm width roller guide adheres to modern minimalist interior design style.

**密封 Sealing**  
勾企上下密封关键点，采用高回弹EP材质密封棉。  
The sealing part of roller guide utilizes EP sealing foam with high resilience.

**安全 Safety**  
勾企采用连接件+注胶+6061-T6材质增加强度，提高抗风压性。  
Roller guide is made of fittings, injection glue and alloy 6061-T6 to improve wind resistance performance.



## CURTAIN WALL SERIES 幕墙系列

亚铝拥有大量断桥和非断桥幕墙系列产品，主要分为构件式幕墙和单元式幕墙两大类。

构件式：全明框、全隐框和半隐框系列  
单元式：幕墙有众多不同造型系列供选择。

Asia Aluminum produces a large variety of broken and non-broken bridge curtain wall series, primarily stick glass curtain wall and unitized curtain wall.

Stick Glass Curtain Wall: Fully-exposed frame, fully-concealed frame, and semi-concealed frame series.

Unitized Curtain Wall: Various series for selection.



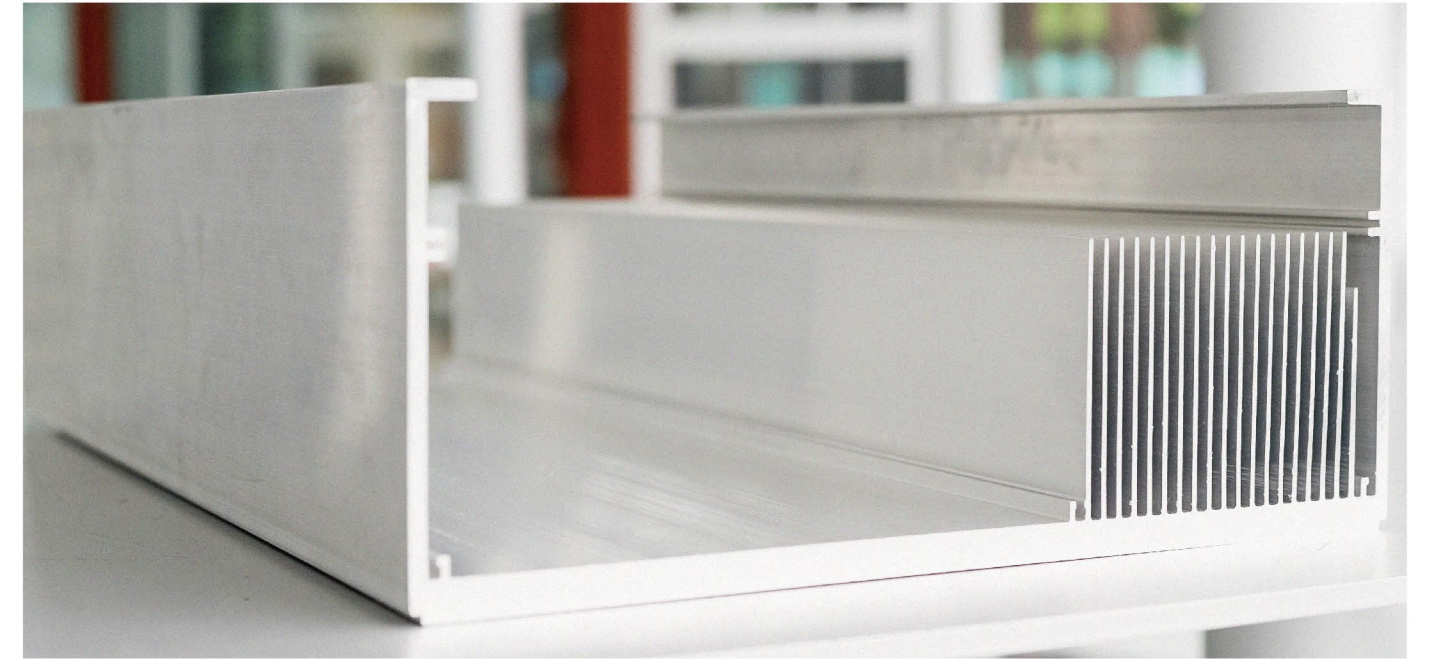


## SOLAR PANEL PROFILES 太阳能型材系列

型材产品丰富多样, 各种转接、配套材料齐全。产品均严格遵循相关国家标准制作生产。

AAG亚铝的太阳能型材产品, 经过严格检测控制、多种精密工艺流程生产, 各项性能指标优异, 整体技术水平达到行业先进水平。

Asia Aluminum's solar panel profiles are varied, with complete coupling and auxiliary materials. Production strictly follows national production standards.



## INDUSTRIAL PROFILES 工业型材系列

亚铝工业型材品种繁多, 包罗万象, 用于新能源汽车部件、如散热器、电池托盘等、生产运输设备、集装箱、飞机部件、家具等。

Asia Aluminum's industrial profiles are used in electronic vehicles, such as heat sink, battery tray etc., transportation equipment, shipping container, aircraft parts, furniture, etc.



## 全球装配式建筑领导者 Global Leader of Modular Integrate Construction

中国首家具有混凝土MiC、钢结构MiC、铝结构MiC综合研发和生产能力的大型制造企业。

China's first large-scale manufacturing enterprise with comprehensive R&D and production capabilities for concrete structured MiC, steel structured MiC, and aluminum structured MiC.



铝游家有限公司创立于2014年，是一家从事“组装合成”建筑法 (MiC) 的研发、设计、生产、销售与安装服务的先进制造企业。公司总部位于香港，在粤港澳大湾区（肇庆高新区）设有一站式生产制造基地，占地面积约10,000亩，年产能约160万平方米，综合员工规模约3,000人。

公司致力于成为全球领先的“组装合成”建筑 (MiC) 生产制造企业，时至今日，已成功开发了钢筋混凝土MiC、钢结构MiC、铝结构MiC三大建筑体系，并延伸至铝合金人行天桥、铝合金智慧爬升架、铝合金模板、铝合金家居等建造业创新技术和产品。我们的产品被广泛应用在住宅、教育、医院、旅游、商业、市政等多个领域，产品远销东南亚、北美等国家和地区。

Founded in 2014, AluHouse, is a high-tech enterprise engaging in the research and development, design, production, sales and installation services of Modular Integrated Construction (MiC). With its headquarter located in Hong Kong, AluHouse has a one-stop manufacturing base in the Greater Bay Area ( Zhaoqing High-tech development zone, Guangdong), covering an area of about 10,000mu, with an annual production capacity of about 1.6 million square meters and a comprehensive manpower of about 3,000 workers.

AluHouse is committed to becoming the world's leading manufacturer of modular integrated construction. Since its establishment, the company has successfully developed MiC systems with concrete structures, steel structures and aluminum structures, and further extended its business segment to aluminum pedestrian bridges, aluminum smart scaffolding and formworks as well as more innovative technologies and products such as aluminum home furnishing. Our products are widely used in residential units, schools, hospital, tourist industry, commerce, municipal and other fields in countries and regions such as Southeast Asia, North America, etc.

生产规模居全国前列，综合实力行业领先  
The Production Scale and Comprehensive Strength Rank In The Forefront of The Industry

亚铝  
工业城

**10,000mu**

Asia Aluminum Industrial City

装配式  
组装工厂

**250,000+m<sup>2</sup>**

Sheltered MiC Factory

年产能  
面积

**1,600,000m<sup>2</sup>**

Annual Production Capacity

模块平均  
生产周期

**10-15days**

Module Average Production Cycle

装配制造  
工位

**1500+**

Assembly Station

每日交付  
模块数量

**100+**

Number of Modules Delivered Per Day

国内外  
专利技术

**250+**

Patented Technology at Home and Abroad

# CONCRETE STRUCTURED MiC 混凝土MiC

公司建设有混凝土结构MiC生产线，拥有一套双120新型搅拌站，配套有标准实验室，混凝土撒布机生产器，自动化钢筋加工线等，实验室符合香港QSPSC认证。

AluHouse established a concrete structured MiC production line with a set of double 120 mixing station, and equipped with standard laboratories, mobile concrete spreader line, automated steel bar processing line, etc. which meets with the Hong Kong QSPSC certification.

40  
240,000m<sup>3</sup>

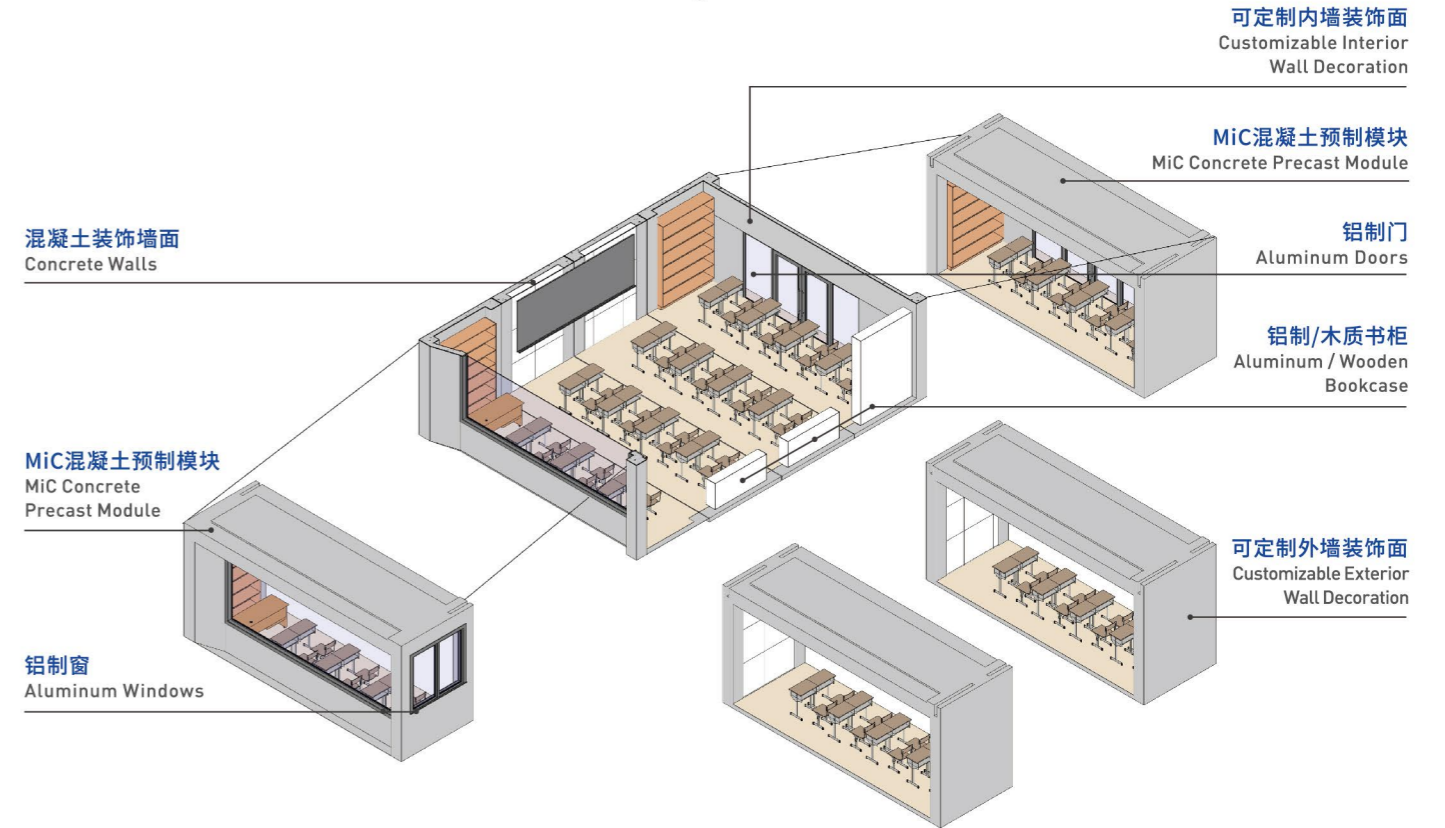
初期设计年产能达24万立方米，可满足40层永久性建筑模块的生产制造。

The initial design annual production capacity is 240,000 cubic meters, which enable the production and manufacturing of 40-storey permanent building modules.

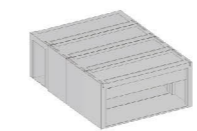
# Concrete Structured MiC

## 产品特点 PRODUCT FEATURES

### 混凝土结构装配式建筑 ALURC40 Concrete Structured Prefabricated Building ALURC40



### 混凝土预制构件 Precast Concrete Elements



混凝土箱式模块  
Concrete MiC Modules



预制飘窗  
Prefabricated Bay Windows



预制阳台板  
Prefabricated Balcony Panels



预制叠合板  
Prefabricated Laminates



预制柱  
Prefabricated Columns



预制外墙板  
Prefabricated Sidings



预制楼梯  
Prefabricated Stairways



预制梁  
Prefabricated Beams



# STEEL STRUCTURED MiC 钢结构MiC

钢结构建筑系统有效整合了钢、铝、混凝土三种材料的优势。主体框架结构为钢材，底部嵌入混凝土楼板，外墙围护和室内装饰装修系统则采用环保铝合金材料，整体实现轻量化、强度高的优点。

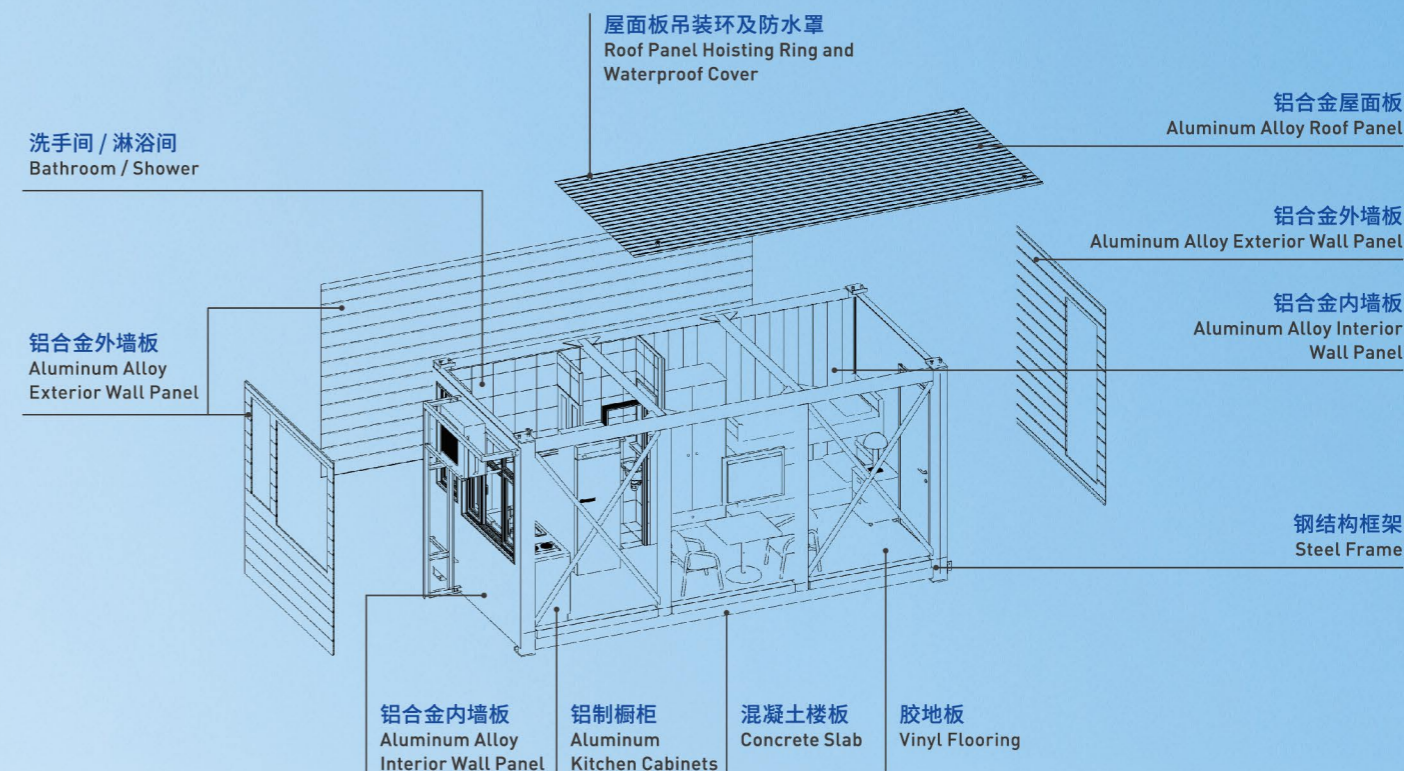
The steel structure building system effectively integrates the advantages of three materials: steel, aluminum and concrete. The main frame structure is made of steel, and the bottom is embedded with concrete floor slabs. The exterior wall enclosure and interior decoration system are made of environmental friendly aluminum alloy, which achieve the advantages of light weight and high strength as a whole.



生产线内规划增设自动化焊接生产线，可有效满足4-30层永久性建筑模块的生产制造。

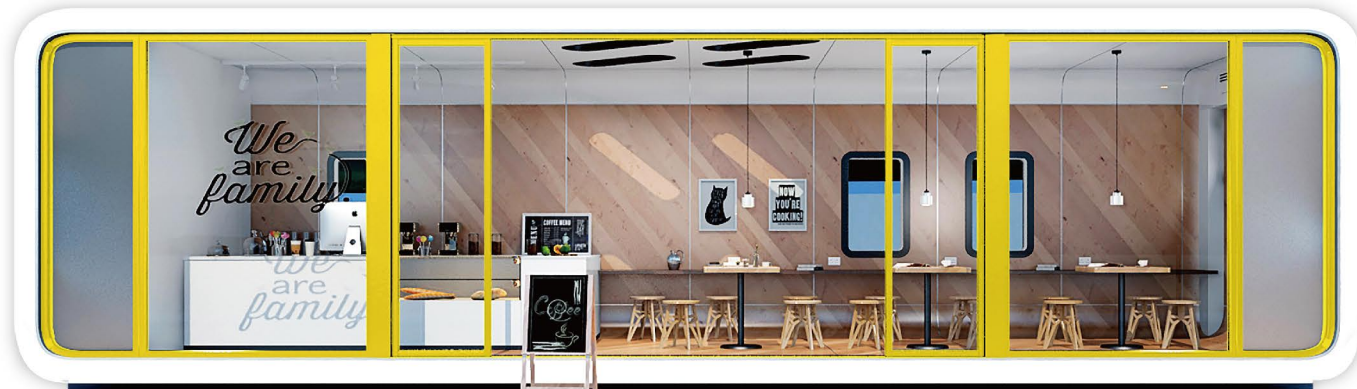
An automatic welding production line is planned to be added to the production line, which can effectively meet the production and manufacturing of 4-30-storeys permanent modules.

## 产品特点 PRODUCT FEATURES



# Steel Structured MiC





## ALUMINUM STRUCTURED MiC 铝结构MiC

铝结构MiC系统为铝游家专利技术产品，房屋主体结构和装修基本采用全铝合金物料制造而成。

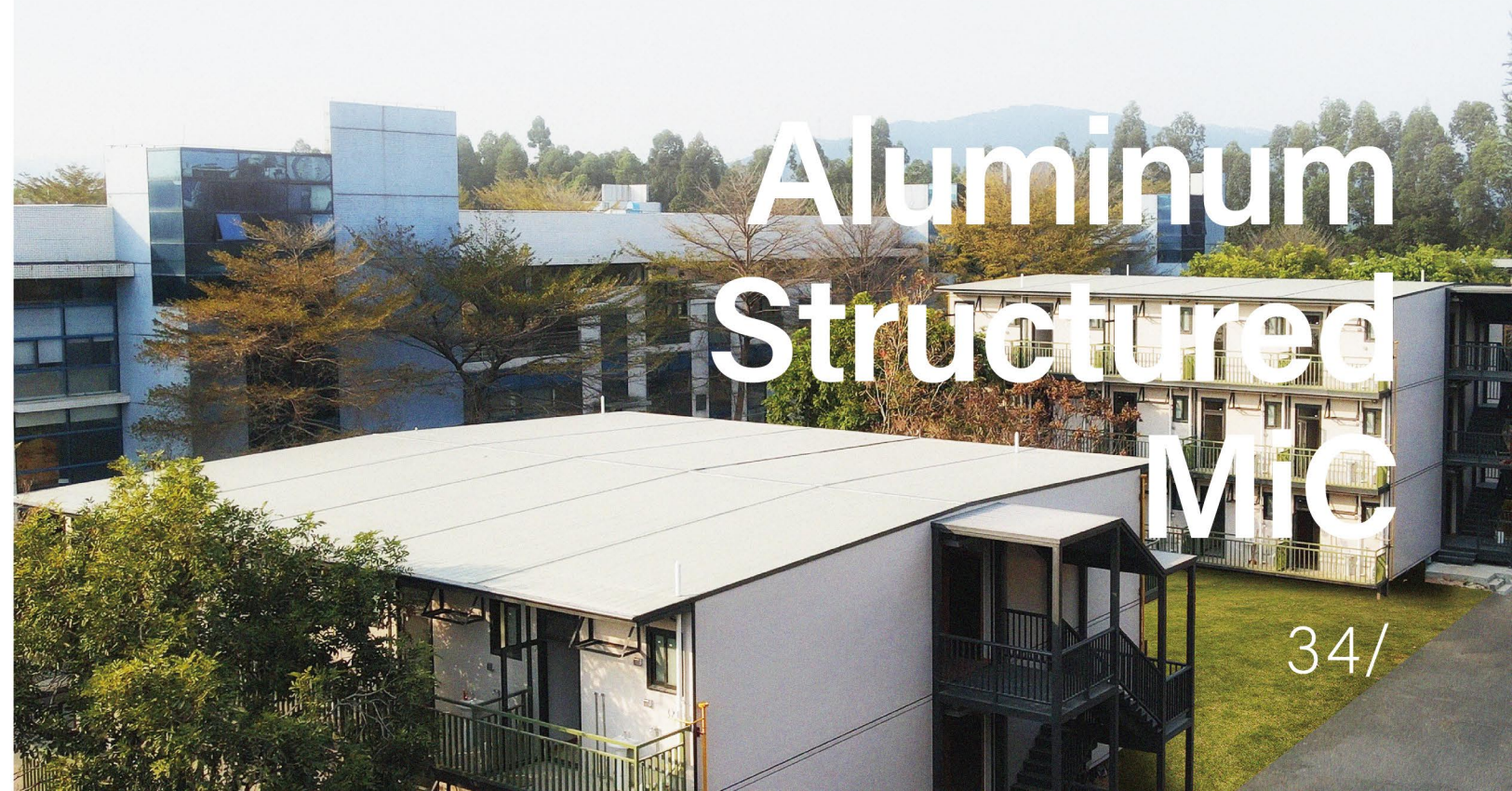
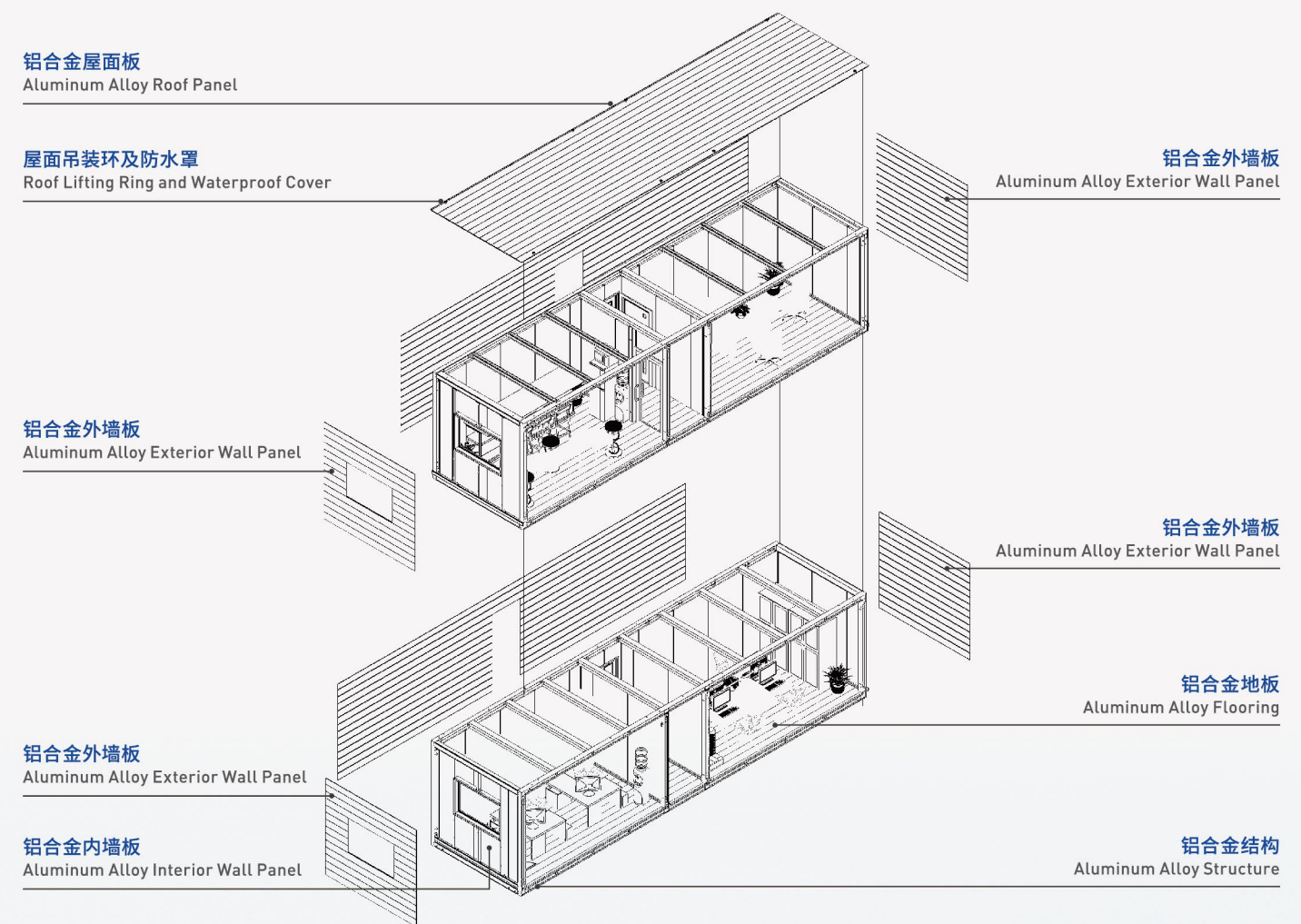
时至今日，公司已成功研发了近20款铝合金组合房屋，广泛应用于4层及以下度假房屋或商用店铺。

The aluminum structured MiC system is a patented technology product of AluHouse. The main structure and the decoration are basically assembled and manufactured with all aluminum alloy.

So far, AluHouse has successfully developed nearly 20 mobile aluminum alloy houses, which are widely used in the construction of mobile resorts or commercial stores of 4 levels in height.



## 产品特点 PRODUCT FEATURES



# Aluminum Structured MiC



# GUANGDONG ALUBRIDGE ENGINEERING CO., LTD

AluBridge Engineering Co., Ltd. leads the industry with one-stop service of aluminum pedestrian bridge, offering customers with research, development, design, manufacture and installation. Since its establishment, AluBridge has been qualified with Grade 2 of general contracting on municipal public utility construction engineering. It has manufactured numerous aluminum pedestrian bridges with innovative modeling and superior performance in cities throughout Guangdong Province. Committed to environmental protection, AluBridge products offer sustainable urban development, capable of being reused or recycled. Pedestrian bridges are pre-fabricated in its production center, making on-site installation extremely efficient and accurate.

## 广东铝之桥 工程有限公司

广东铝之桥工程有限公司致力于装配式铝天桥的一站式服务，从研发、设计、制造、安装到销售，提供完善解决方案。铝之桥具备市政公共工程施工总承包二级资质，自成立至今，已为广东珠海、肇庆、四会、佛山、海南等城市建设了多座造型新颖、性能优越的铝合金人行天桥。我们致力于用新型环保的建筑材料，产品可重新利用或回收，赋能城市桥梁工程建设的可持续发展。我们的装配式铝天桥在工厂内预制，成就极为精准及快捷的现场安装。

### 一站式服务 / ONE-STOP SERVICE

-  研发 R&D
-  设计 Design
-  制造 Manufacture
-  安装 Installation
-  销售 Sales



AluPartner is an established brand focusing on aluminum household products, with its own production and technical center. AluPartner innovates upon traditional household products, and introduces aluminum designs that surpasses past limitations. Our product categories include aluminum floor panel, furniture, indoor decoration panel, wall panel, etc. AluPartner products have obtained several patents for its utility and design. On top of traditional advantages, AluHouse's aluminum household products' key benefits include: zero formaldehyde, water proof, insect proof, fire proof, recyclable and easy installation.



## ALUPARTNER 铝拍档



生产制造  
Manufacture



技术支持  
Technical Support

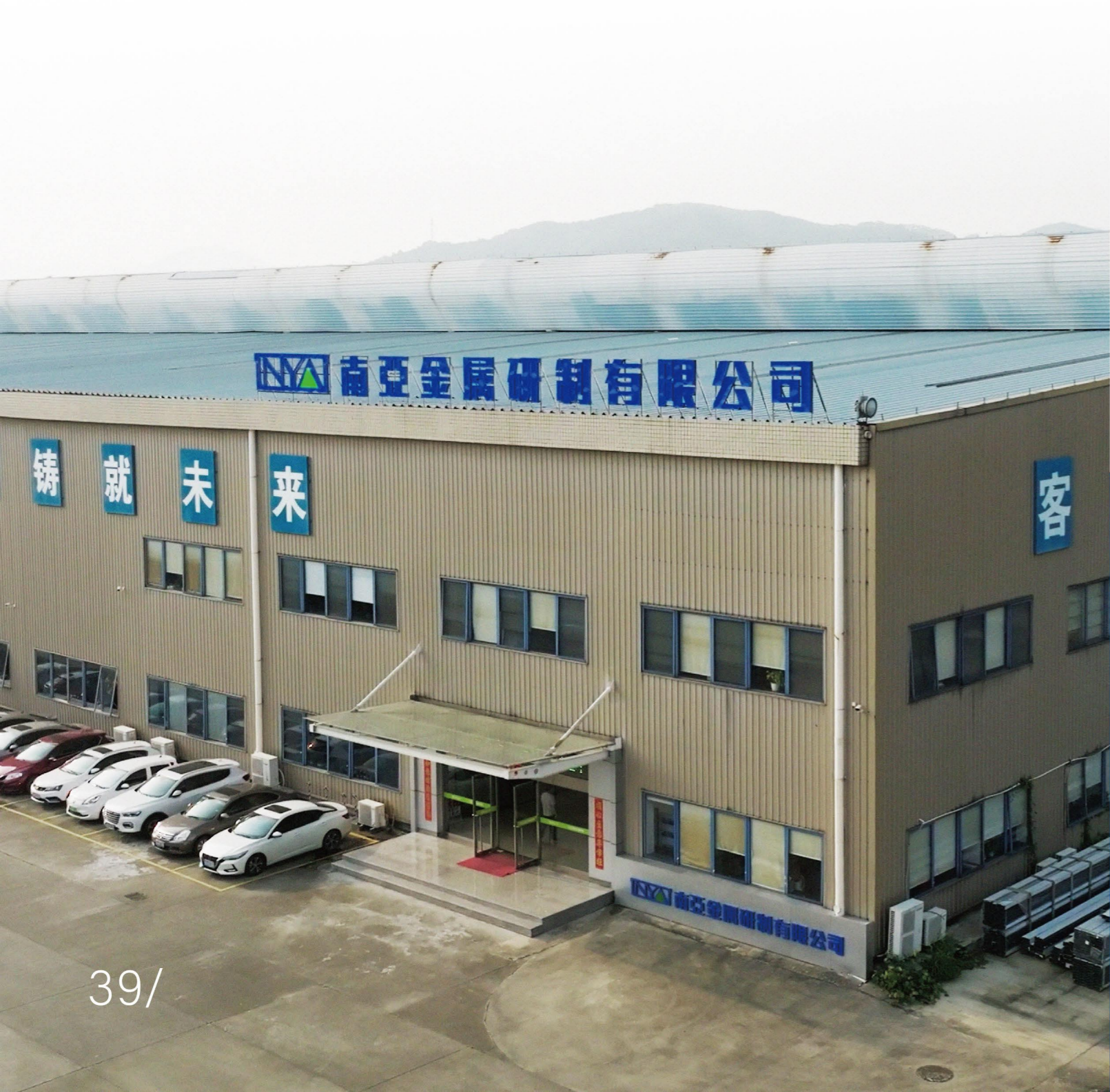
铝拍档是提供生产制造和技术支持的铝家居品牌。铝拍档装板材涵盖了环保铝地板、铝家具、铝内装板、铝挂墙板等品类。洞察全球全铝家居应用趋势，颠覆传统家具和装饰板行业的应用局限，创造家装行业新革命。

铝拍档产品已荣获多项实用新型专利和外观设计专利技术，并以势如破竹之势，在家装、工装等室内外空间场景多种应用。铝拍档产品在传统产品之上拥有更多优势，例如零甲醛、防水防潮、防虫防蛀、防火耐高温、铺装便捷等，得到消费者的青睐和追捧。

**NYA  
肇庆南亞金属研制  
有限公司**

依托年产能60万吨的AAG亚铝生产基地，新建成国内一流幕墙加工中心—肇庆南亞金属研制有限公司。这是全国首家专门集中生产幕墙板块代加工的企业。形成了“型材原材料制造—幕墙板块深加工—新型外墙铝单板研发制造—幕墙产品检测平台”的全面配套服务。并以其基地供应的便利性、质量、信誉保证、高生产效率等突出优势将为广大建筑公司、幕墙公司提供便捷高效、优质放心的产品。公司单元体月产能约100000余m<sup>2</sup>，年产能1200000余m<sup>2</sup>。南亞金属研制通过专业的幕墙代加工服务，将为各地的重点地标性幕墙工程和高难度的幕墙项目助上一臂之力。

NYA is a leading curtain wall processing center. It is the first enterprise specializing in centralized production of curtain wall with OEM services in China. From manufacturing of aluminum profiles to processing of curtain wall, research and development of new extruding aluminum panels, and curtain wall finished product testing, NYA provides one-stop service to its customers. We deliver efficient services and superior products to construction and curtain wall companies. The monthly output of curtain wall units exceeds 100,000 square meters, and annual output exceeds 1,200,000 square meters. With professional OEM services for curtain wall, NYA plays an important role in key landmarks and challenging curtain wall projects worldwide.



100,000m<sup>2</sup>

月产能 (面积)  
Monthly Production

1,200,000m<sup>2</sup>

年产能 (面积)  
Annual Production





GUANGDONG  
MACMETAL NEW ENERGY  
TECHNOLOGY CO., LTD  
迈科美新能源科技有限公司

300,000<sup>t</sup>

年产能 (吨)  
Annual Production

600,000<sup>GW</sup>

太阳能型材组件需求  
Solar Profile Module Requirements

迈科美新能源科技有限公司出品的太阳能型材产品无论性能、品质均保持在苛刻的高标准水准。迈科美新能源太阳能光伏型材的年产能达30万吨，可满足客户60GW组件的需求。我们使用行业先进的“一模多孔”模具设计技术和挤压生产技术等核心科技，不仅具有规模化生产的优势，也在产业链垂直一体化上，产品从熔铸到成品边框交付。

Guangdong Macmetal New Energy Technology Co., Ltd. produces solar PV profiles with strict standards, offering products with peak performance and quality. The production capacity of solar PV profiles reaches 300,000 tons per year, meeting the module demand of 60GW. The company's innovative technologies, including its Multi-Die extrusion, enables mass production and vertical integration of the industry chain, from melt casting to the finished solar panel frame.



**FIRST GO**  
菲思科®

ZHAOQING  
FIRST GO METAL  
TECHNOLOGY  
CO., LTD

## 肇庆菲思科金属科技 有限公司

肇庆菲思科金属科技有限公司是一家专注研发、生产、销售于一体生产型技术型企业。公司引进先进设备，专业从事生产销售PA隔热条，规格型号齐全，而且可以针对不同客户做出一对一的定制设计生产。

Zhaoqing First Go Metal Technology Co., Ltd. focuses on the production and sales of PA insulation bars with complete specifications and models. The company brings in advanced, specialized equipment to make tailored designs and production for various customer needs.

# 工程案例

## MAJOR PROJECTS



亚铝不断在全球范围地标性建筑中多有建树,全球不同地区近乎苛刻的使用环境及复杂的施工要求仅有屈指可数的企业可提供如此完善全面的解决方案。北美、中东、欧洲、日本、东南亚、香港特区和澳大利亚等市场的诸多机场、摩天大厦、体育场馆、展览会议场馆、标志建筑物和住宅项目中,所获得的赞誉和信任不胜枚举。亚铝所合作的工程数量繁多,不能尽列。具体工程名录可参照其它本公司分册。

Asia Aluminum continues to construct various landmarks around the world. Under harsh environments and complicated construction requirements in different regions of the world, Asia Aluminum is able to provide outstanding and comprehensive solutions to all projects. Asia Aluminum expands its business domestically and internationally, constructing many airports, skyscrapers, stadiums, exhibition centers, landmarks, and top residential projects in North America, the Middle East, Europe, East Asia, Southeast Asia, Australia, and Hong Kong. Below are just a few of our iconic projects, a comprehensive list can be found in Asia Aluminum's catalogue.

ASIA ALUMINUM  
WRITES  
THE PLAYBOOK  
FOR ALUMINUM  
ENGINEERING'S  
GREATEST ICONS

AAG亚铝演绎  
铝业经典工程传奇



LUSAIL  
STADIUM  
卡塔尔世界杯  
主场馆



BURJ  
KHALIFA  
迪拜塔



SYDNEY  
OPERA HOUSE  
悉尼歌剧院



NATIONAL STADIUM  
BIRD'S NEST  
国家体育场 (鸟巢)



CAPITAL  
INTERNATIONAL  
AIRPORT  
首都国际机场



NATIONAL CENTER  
FOR THE PERFORMING ARTS  
中国国家大剧院



LUSAIL TOWERS  
卢塞尔广场大厦



59/

SHANGHAI  
TOWER  
上海中心大厦

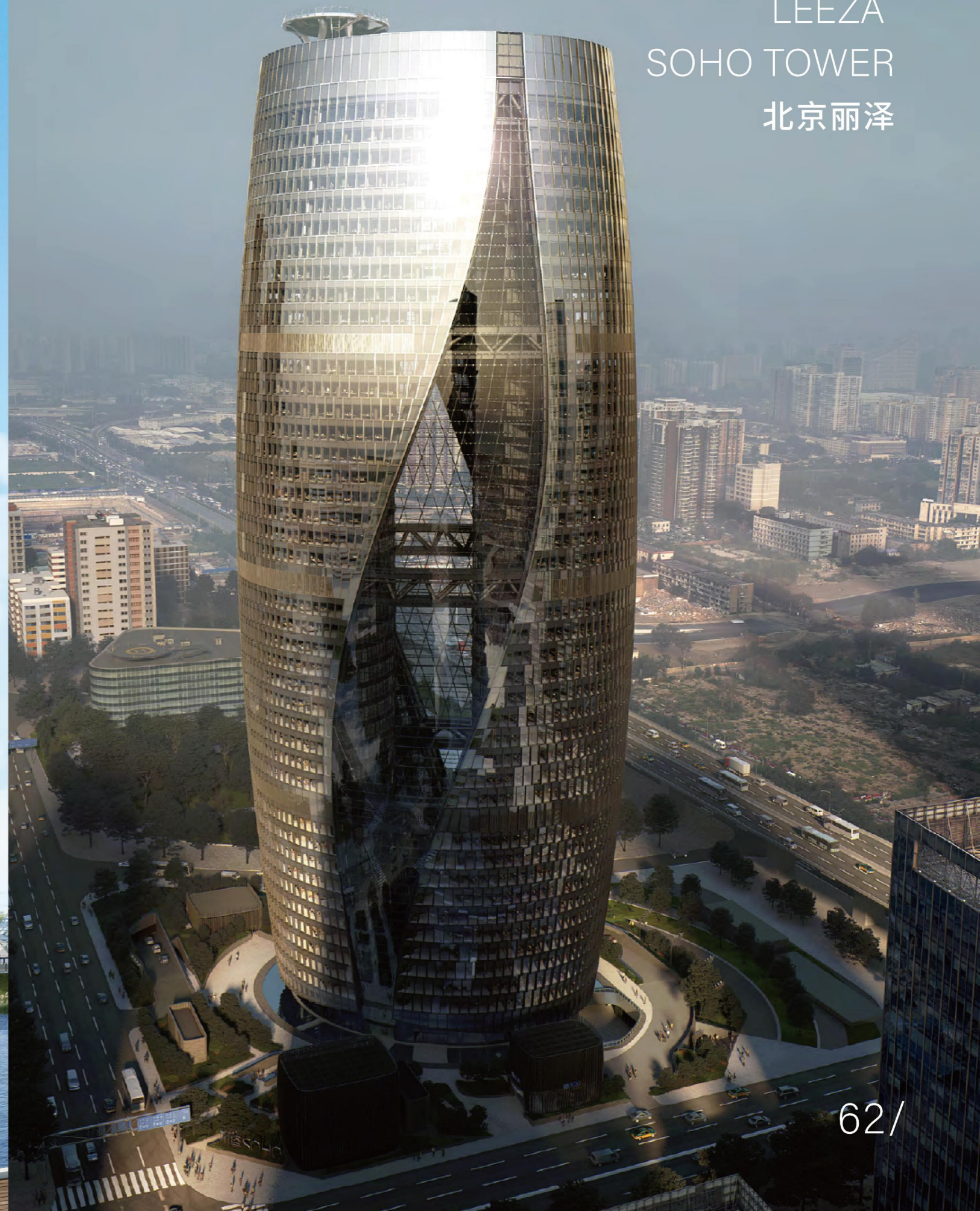


60/

HUZHOU  
SUN HOTEL  
湖州太阳酒店



LEEZA  
SOHO TOWER  
北京丽泽





KLCC TWIN  
TOWERS  
吉隆坡双峰塔



JUMEIRAH  
DUBAI  
迪拜卓美亚  
帆船酒店



GRAND  
LISBOA MACAU  
澳门新葡京  
大酒店



65/

THE HENDERSON  
(2 MURRAY ROAD)  
香港美利道2号



66/

TAIPEI 101  
BUILDING  
台北101大厦



67/

ZHUHAI  
HENGQIN IFC  
BUILDING  
珠海横琴  
IFC大厦



68/

SHENZHEN AIRPORT  
深圳机场



HAMAD  
INTERNATIONAL AIRPORT  
卡塔尔哈马德国际机场



SINGAPORE  
CHANGI AIRPORT  
新加坡机场



ASIAN  
INFRASTRUCTURE  
INVESTMENT BANK  
亚洲基础设施  
投资银行



SHANDONG  
GREENLAND  
INTERNATIONAL  
FINANCIAL CENTER  
山东绿地  
国际金融中心

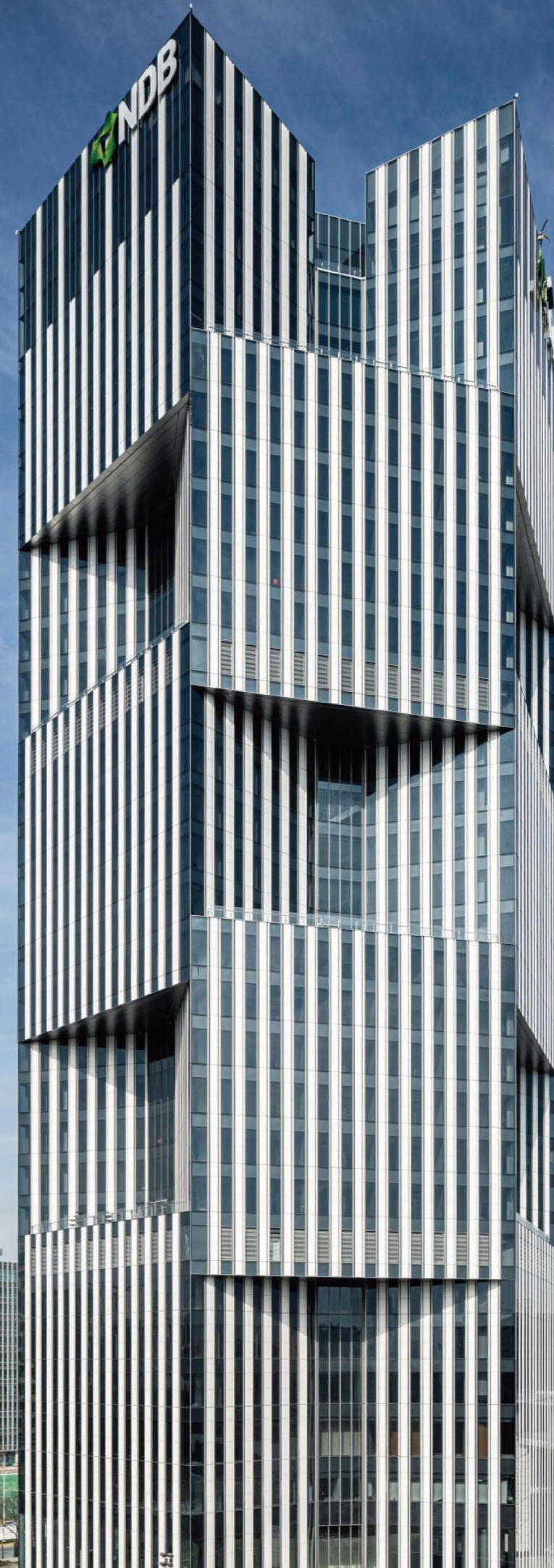


CHANGSHA  
SHI MAO PLAZA  
长沙世贸广场



73/

NEW  
DEVELOPMENT  
BANK(BRICS)  
金砖国家新  
开发银行(上海)



74/

GUIZHOU  
INTERNATIONAL  
FINANCIAL CENTER  
贵州国际金融中心



HARPA CONFERENCE HALL  
AND CONFERENCE  
CENTER REYKJAVIK, ICELAND  
冰岛歌剧院



HAIKOU CDF  
海口免税城



SHENZHEN  
INTERNATIONAL  
EXHIBITION CENTER  
深圳国际会展中心

