

1383012743
JICHENG



广东集诚液压机械有限公司 GUANGDONG JICHENG HYDRAULIC MACHINERY CO., LTD.

广东省江门市蓬江区棠下镇江沙工业示范区莲塘路

电话: 0750-3582168

传真: 0750-3580668

E-mail: gdjicheng@126.com

网站: www.gdchengchuang.com

THE OVERALL SOLUTION AND DESIGN OF THE HYDRAULIC SYSTEM

液压系统整体解决方案设计及生产

油路总成 / 液压油缸 / 液压阀件 / 液压泵站
Oil circuit assembly/hydraulic cylinder/hydraulic valve/hydraulic pump station





种类齐全
Complete variety

个性定制
Personalized customization

品质保障
Quality assurance

专业团队
Professional team

广东集诚液压机械有限公司经过十多年的发展和积累，并于2022年5月完成整体搬迁，现已乔迁至位于广东省江门市蓬江区棠下镇江沙工业示范区莲塘路的自建厂房，厂房建筑面积达20000多平方米。

After more than ten years of development and accumulation, Guangdong Jicheng Hydraulic Machinery Co., Ltd. completed its overall relocation in May 2022 and has now relocated to a self built factory located on Liantang Road, Jiangsha Industrial Demonstration Zone, Tangxia Town, Pengjiang District, Jiangmen City, Guangdong Province. The factory has a construction area of over 20000 square meters

科技创造品质，诚信引领未来
Technology creates quality, integrity leads the future

车间角一 Workshop Corner One



公司正门口
At the main entrance of the company



办公大楼
Office building



办公大堂
Office lobby



COMPANY PROFILE



公司简介

广东集诚液压机械有限公司（原佛山市集成液压机械有限公司）是一家专注于液压系统的整体解决方案设计及生产的专业厂商，致力于各类型油路板、液压系统的研发。公司经过十多年的发展和积累，在诸多行业积累了丰富成熟的技术解决方案，精湛的加工技能，稳定可靠的品质，为诸多客户提供了高质量的整体解决方案成套产品。

广东集诚液压机械有限公司主要提供产品有油路总成、液压油缸、液压阀件、液压泵站，还提供专业的液压工程师为你产品量身订造、属于你产品的专用整体方案和液压产品。

客户的需求，就是我们前进的方向！期待与您携手走进工业 2025 的新时代！

Guangdong Jicheng Hydraulic Machinery Co., Ltd. (formerly Foshan Integrated Hydraulic Machinery Co., Ltd.) is a professional manufacturer specializing in the design and production of overall solutions for hydraulic systems, and is committed to the research and development of various types of oil circuit boards and hydraulic systems. After more than ten years of development and accumulation, the company has accumulated rich and mature technical solutions, superb processing skills, stable and reliable quality in many industries, and has provided many customers with high-quality overall solution sets of products.

Guangdong Jicheng Hydraulic Machinery Co., Ltd. mainly provides oil circuit assemblies, hydraulic cylinders, hydraulic valves, and hydraulic pump stations. It also provides professional hydraulic engineers tailor-made for your products, special overall solutions and hydraulics for your products. product.

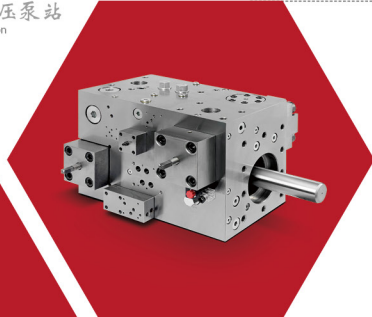
The needs of customers are our way forward! Looking forward to working with you to enter the new era of industry 2025!

PRODUCT TABLE OF CONTENTS

产品目录

油路总成 / 液压油缸 / 液压阀件 / 液压泵站
Oil circuit assembly/hydraulic cylinder/hydraulic valve/hydraulic pump station

科技创造品质，诚信引领未来
Technology creates quality, integrity leads the future



07-18
油路总成
Oil circuit assembly



19-22
液压油缸
Hydraulic cylinder

广东集诚液压机械有限公司
Guangdong Jicheng Hydraulic Machinery Co., Ltd.



23-25
液压阀件
Hydraulic valve



26
液压泵站
Hydraulic power station

QUALITY CONCEPT

品质理念

持续改善，客户满意

Continuous improvement, customer satisfaction



BUSINESS PHILOSOPHY

经营理念

专业 专注 务实 创新



先进的技术，精良的设备使我们的产品始终保持着同行业中的领先地位；公司奉行“以人为本、品质至上、顾客满意、科技创新”的质量方针，以质量求生存，以创新求发展。

Advanced technology and sophisticated equipment enable our products to always maintain a leading position in the same industry; the company pursues the quality policy of "people-oriented, quality first, customer satisfaction, technological innovation", and strives for survival by quality and development by innovation.

PRECISION PROCESSING EQUIPMENT

精密加工设备

卧式加工中心
加工范围
长: 0-2500mm
高: 0-1900mm

Horizontal machining center
Processing range
Length: 0-2500mm
Height: 0-1900mm

深孔加工中心
加工范围
直径: Φ - Φ 60mm
孔深: 0-1550mm

Deep hole machining center
Processing range
Diameter: Φ - Φ 60mm
Hole depth: 0-1550mm

立式加工中心
加工范围
长: 0-1600mm
宽: 0-800mm

Vertical Machining Center
Processing range
Length: 0-1600mm
Width: 0-800mm

声纳探测仪
Sonar detector



粗糙度测量仪
Roughness measuring instrument

Product Features

产品特点 >>>

工件在加工中心上一次装夹后，数字控制系统能控制机床按不同工序，自动选择和更改刀具，自动改变机床主轴转速，进给量和刀具相对工件的运动轨迹及其他辅助机能，依次完成工件几个面上多工序的加工。加工中心由于工序的集中和自动换刀，减少了工件的装夹、测量和机床调整等时间，同时也减少了工序之间的工件周转、搬运和存放时间，缩短了生产周期。

After the workpiece is clamped on the machining center once, the digital control system can control the machine tool to automatically select and change the tool according to different procedures, automatically change the spindle speed of the machine tool, the feed rate and the motion path of the tool relative to the workpiece and other auxiliary functions, which are completed in sequence. Multi-process processing on several surfaces of the workpiece. Due to the concentration of processes and automatic tool change, the machining center reduces the time of workpiece clamping, measurement and machine tool adjustment. At the same time, it also reduces the workpiece turnover, handling and storage time between processes, and shortens the production cycle.

Die Casting Machine (Manifold Block)

压铸机 (油路集成块系列)

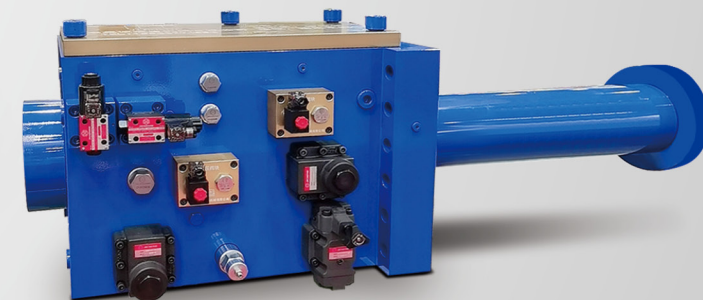
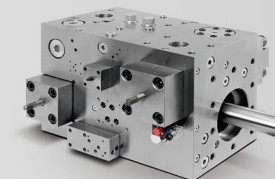
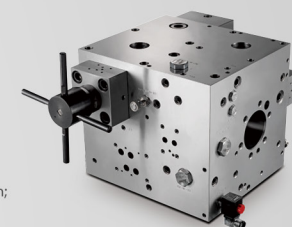


Product Features

产品特点 >>>

大型数控设备加工，精度更高；
进口动态逻辑阀体，响应速度更快、更精准；
优化的油路设计，系统更稳定，可靠；
三板合一，结构更合理。

Large-scale CNC equipment processing, higher precision;
Imported dynamic logic valve body, faster and more accurate response;
Optimized oil circuit design, the system is more stable and reliable;
The three boards are integrated into one, and the structure is more reasonable.



Extruder (Manifold Blocka) 挤出机 (油路集成块系列)



高效率
High Efficiency



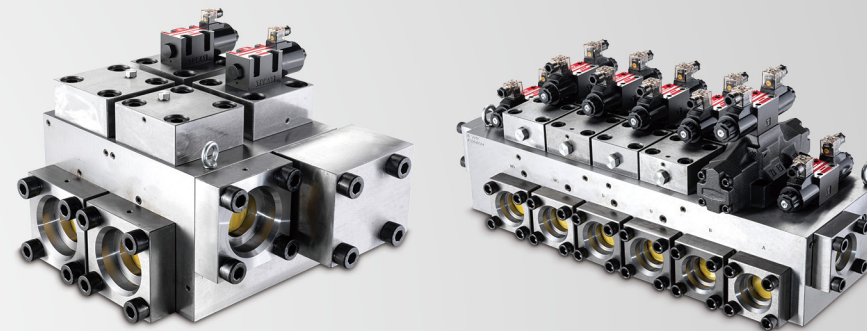
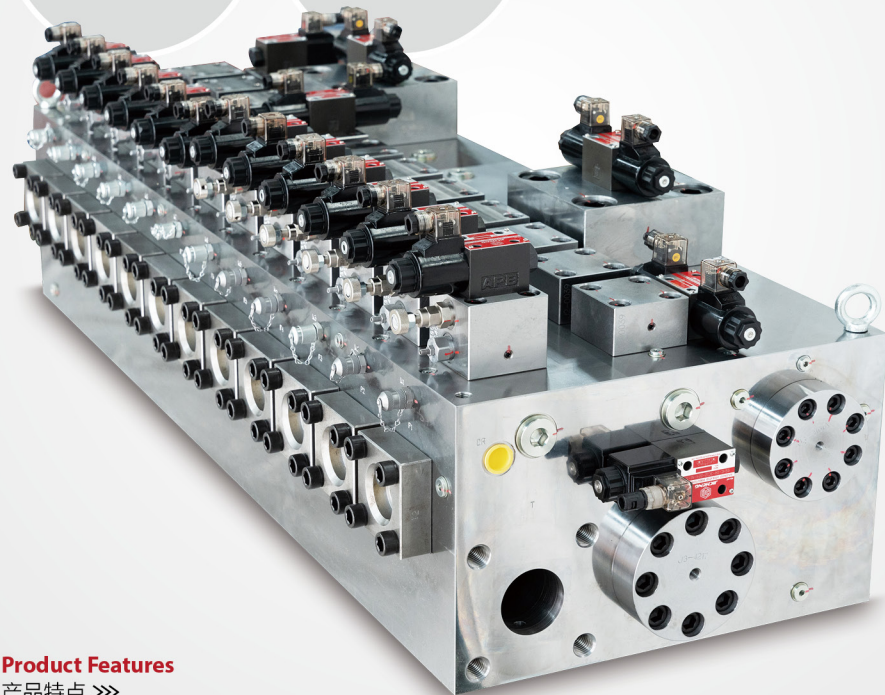
寿命长
Long Life



性能稳定
Stable Performance



精准
Precise



Product Features

产品特点 >>>

逻辑控制单元，减少液压，系统更稳定；
模块化设计，方便调试与维护。

Logic control unit reduces hydraulic pressure and makes the system more stable;
Modular design, convenient for debugging and maintenance.

Large (Manifold Block)

重型 (油路集成块系列)



高效率
High Efficiency



寿命长
Long Life



性能稳定
Stable Performance



精准
Precise

Product Features

产品特点 >>>

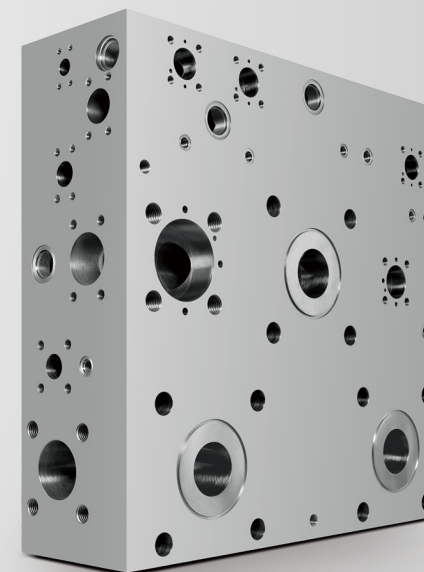
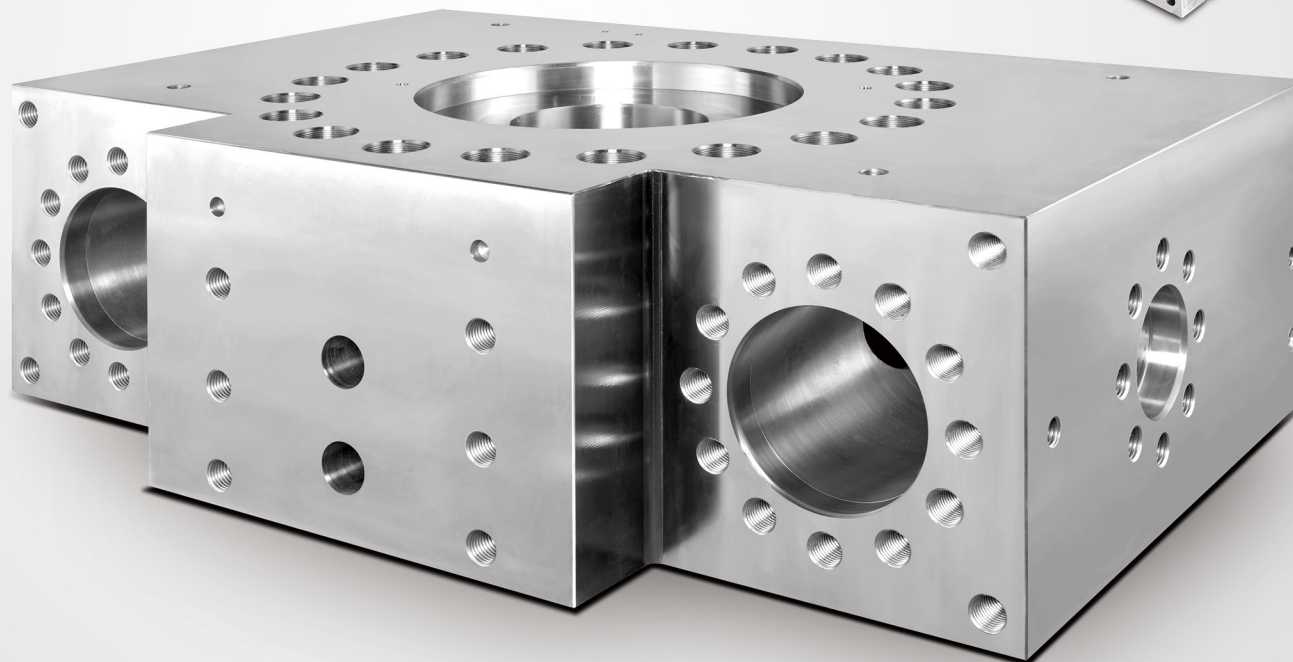
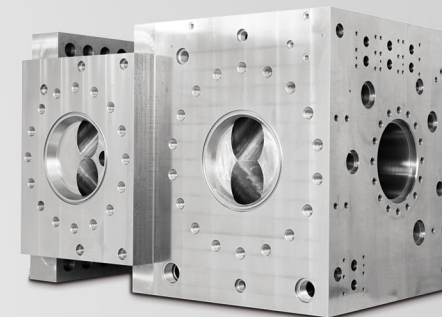
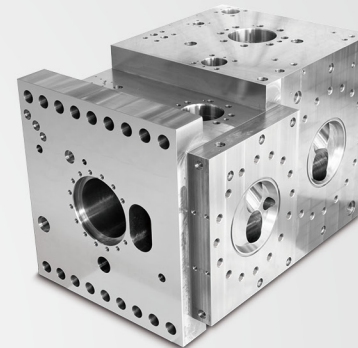
所有的螺纹要求, 光洁度, 公差要求都严格按照国际标准制造。

加工板块中最长达 1800*833*382mm, 重达 4.5 吨, 因此对加工设备有严格要求。

数控设备配有专用的一次成型刀具。

All thread requirements, finish and tolerance requirements are manufactured in strict accordance with international standards. The maximum length of the processing plate is 1800*833*382mm and the weight is 4.5 tons, so there are strict requirements on processing equipment.

The CNC equipment is equipped with a dedicated one-time forming tool.



Stretching Machine And Ceramic Machine (Manifold Block)

拉伸机 / 陶瓷机 (油路集成块系列)



高效率
High Efficiency



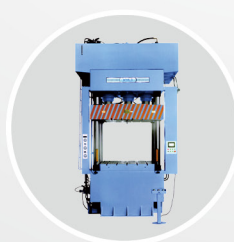
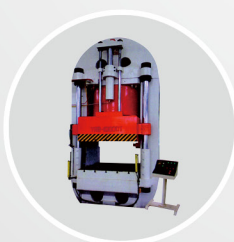
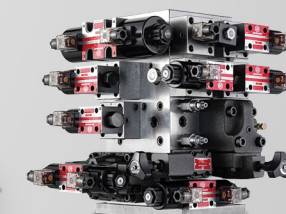
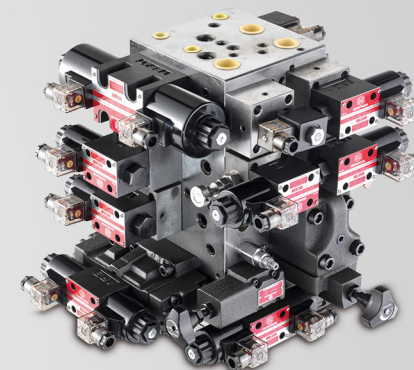
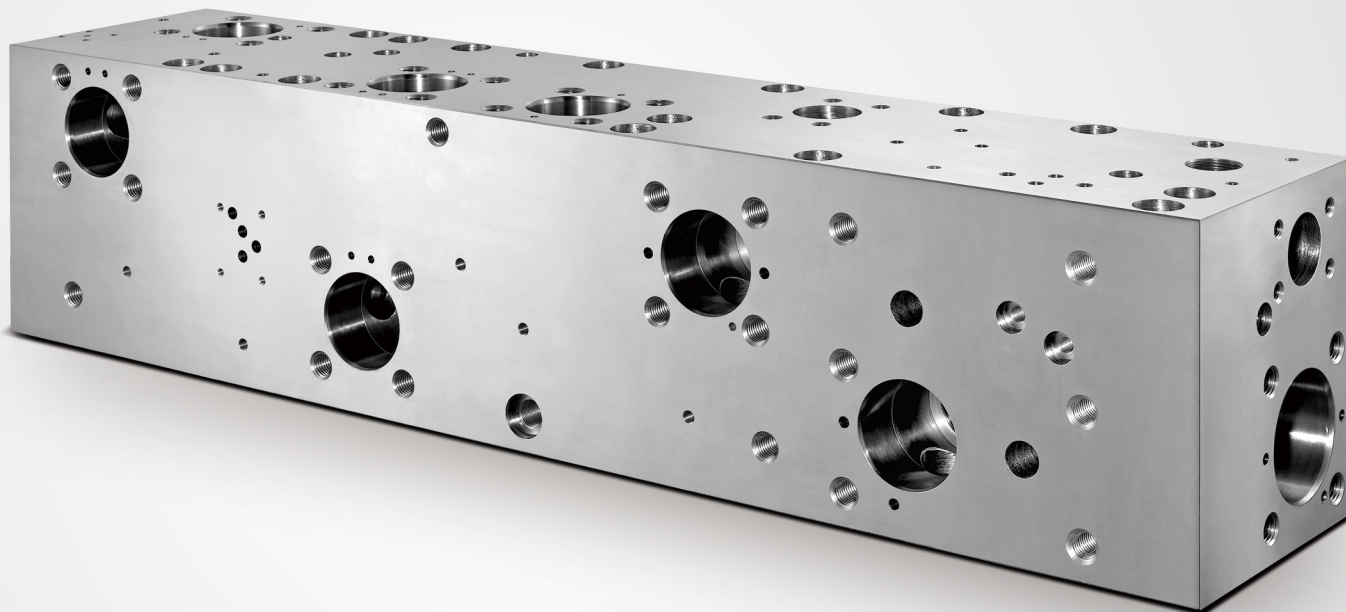
寿命长
Long Life



性能稳定
Stable Performance



精准
Precise



Product Features

产品特点 >>>

基于安全考虑的多重保护装置;
低冲击, 高可靠性的设计;
一体式精密加工, 以减少内漏。

Multiple protection devices based on safety considerations;
Low-impact, high-reliability design;
One-piece precision machining to reduce internal leakage.

Stretching Machine And Ceramic Machine (Manifold Block)

工程机械（插装式）（油路集成块系列）



高效率
High Efficiency



寿命长
Long Life



性能稳定
Stable Performance



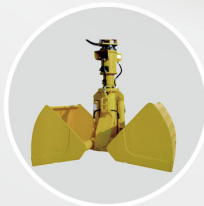
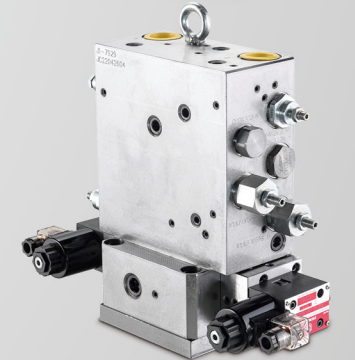
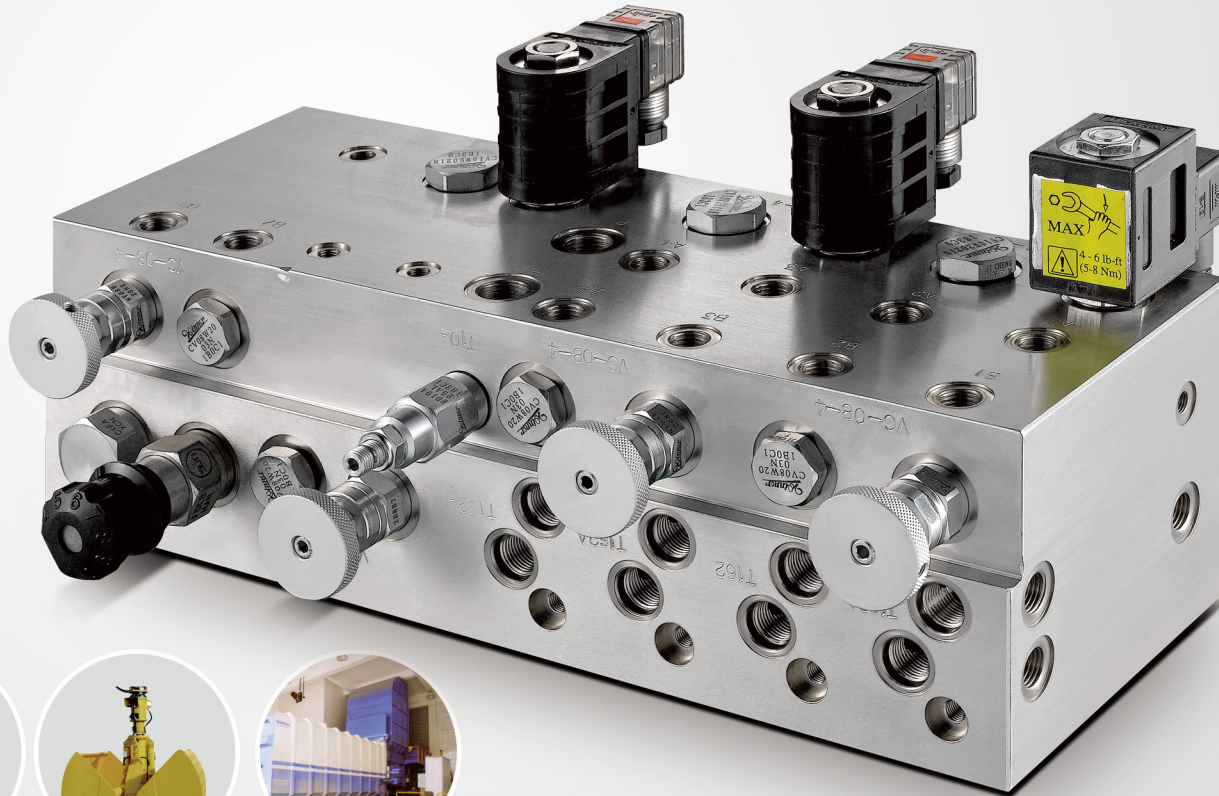
精准
Precise

Product Features

产品特点 >>>

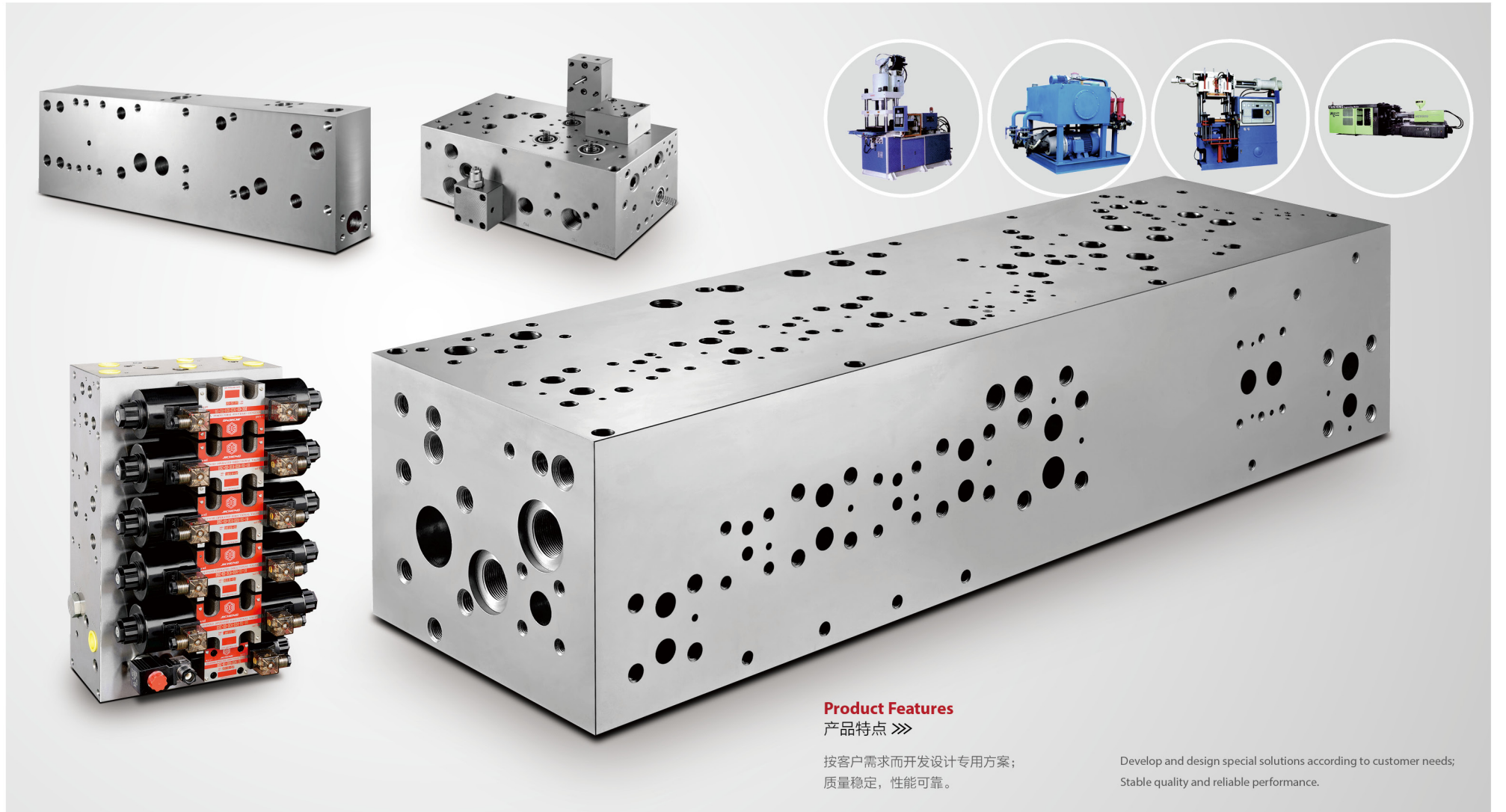
内藏式阀门，机构紧凑，更环保节能；
无泄漏之设计；
数控设备加专用刀具，保证插孔精度。

Built-in valve, compact structure, more environmentally friendly and energy-saving;
No leakage design;
Numerical control equipment plus special tools to ensure the accuracy of the jack.



Common Hydraulic Machinery (Manifold Blocks)

常用液压机械 (油路集成块系列)

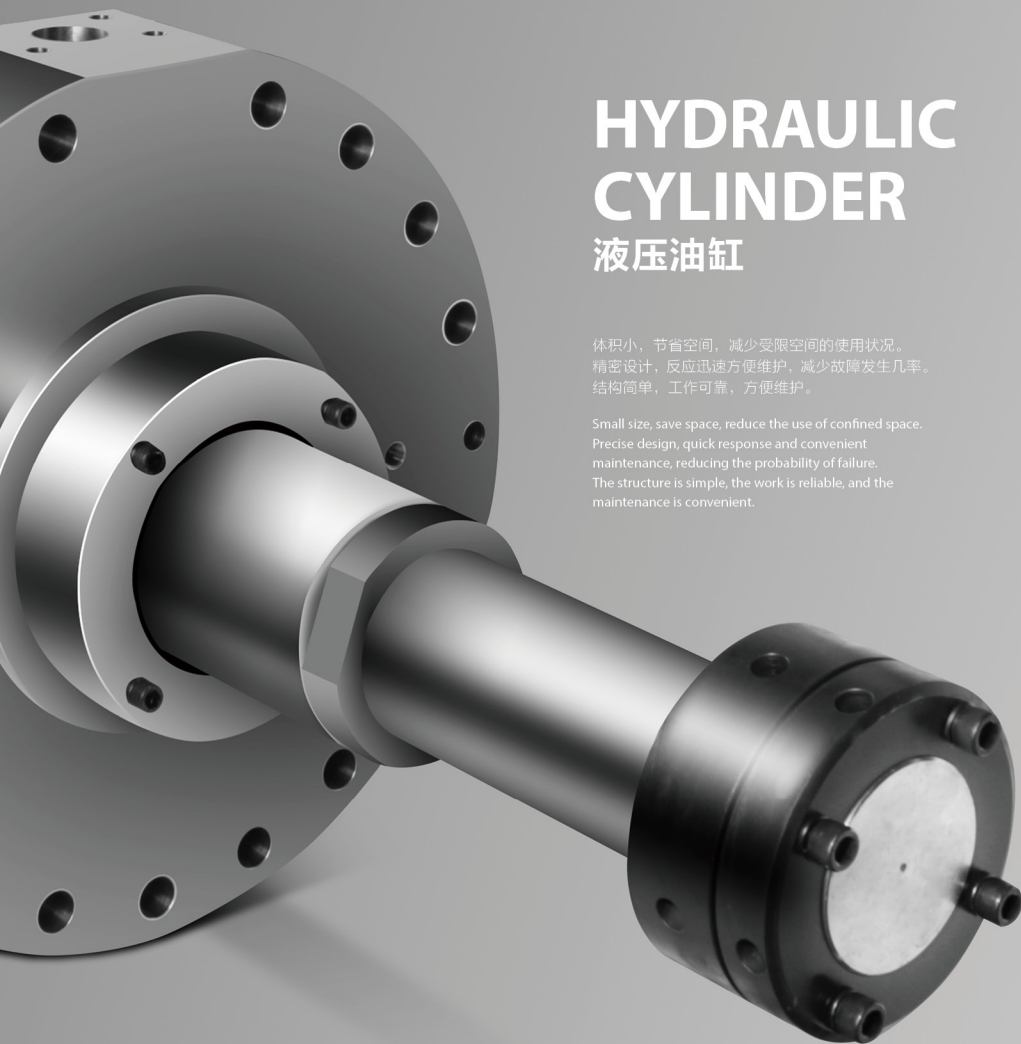


Product Features

产品特点 >>>

按客户需求而开发设计专用方案；
质量稳定，性能可靠。

Develop and design special solutions according to customer needs;
Stable quality and reliable performance.



HYDRAULIC CYLINDER

液压油缸

体积小，节省空间，减少受限空间的使用状况。
精密设计，反应迅速方便维护，减少故障发生几率。
结构简单，工作可靠，方便维护。

Small size, save space, reduce the use of confined space.
Precise design, quick response and convenient maintenance, reducing the probability of failure.
The structure is simple, the work is reliable, and the maintenance is convenient.

3000T Die Casting Machine Oil Cylinder

3000T 压铸机打料油缸

Product Size

产品尺寸 >>>

活塞杆直径: $\Phi 160\text{mm}$
缸筒缸径: $\Phi 250\text{mm}$
速度范围: $0.1-0.5\text{m/s}$
行程: 1300mm

Piston rod diameter: $\Phi 160\text{mm}$
Cylinder bore diameter: $\Phi 250\text{mm}$
Speed range: $0.1-0.5\text{m/s}$
Piston travel: 1300mm



Thimble Cylinder Of 3000T Die Casting Machine

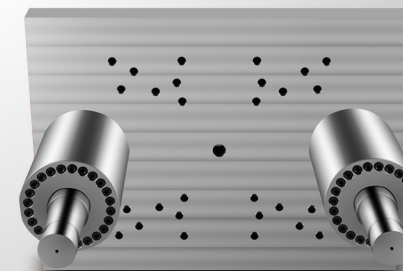
3000T 压铸机顶针油缸

Product Size

产品尺寸 >>>

活塞杆直径: $\Phi 140\text{mm}$
缸筒缸径: $\Phi 240\text{mm}$
速度范围: $0.05-0.2\text{m/s}$
行程: 300mm

Piston rod diameter: $\Phi 140\text{mm}$
Cylinder bore diameter: $\Phi 240\text{mm}$
Speed range: $0.05-0.2\text{m/s}$
Piston travel: 300mm



Clamping Cylinder Of 3000T Die Casting Machine

3000T 压铸机合模油缸

Product Size

产品尺寸 >>>

活塞杆直径: $\Phi 200\text{mm}$
缸筒缸径: $\Phi 350\text{mm}$
速度范围: 0.1-0.5m/s
行程: 1510mm

Piston rod diameter: $\Phi 200\text{mm}$
Cylinder bore diameter: $\Phi 350\text{mm}$
Speed range: 0.1-0.5m/s
Piston travel: 1510mm



Commonly Used Small Cylinders

常用小型油缸

Product Features

产品特点 >>>

我们常用小型油缸全部采用优质原材料，进口密封材料，重型采用铜导向套。
活塞杆采用高频率镀铬处理，外观采用工业高温烤漆。

Our commonly used small cylinders all use high-quality raw materials, imported sealing materials, and heavy-duty use copper guide sleeves.

The piston rod is treated with high-frequency chrome plating, and the appearance is industrial high-temperature baking paint.



Thimble Cylinder Of 3000T Die Casting Machine

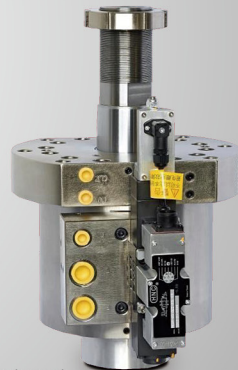
吹瓶机油缸

Product Size

产品尺寸 >>>

活塞杆直径: $\Phi 60\text{mm}$
缸筒缸径: 130mm
速度范围: 0.1-0.5m/s
行程: 20mm
安装方式: 前法兰 (立式)
压力范围: 70-150bar

Piston rod diameter: $\Phi 60\text{mm}$
Cylinder bore diameter: 130mm
Speed range: 0.1-0.5m/s
Piston travel: 20mm
Installation method: front flange (vertical)
Pressure rod diameter: 70-150bar



Product Features

产品特点 >>>

体积小，节省空间，减少受限空间的使用状况。

精密设计，反应迅速方便维护，减少故障发生几率。

标准规格，无需额外配件，减少繁琐直接安装即可使用。

Small size, save space, reduce the use of confined space.

Precise design, quick response and convenient maintenance, reducing the probability of failure.

Standard specifications, no need for additional accessories, reduce cumbersome and direct installation can be used.

Commonly Used Small Cylinders

常用小型油缸

Product Features

产品特点 >>>

自动焊接作业，焊缝光滑外观精美。

结构简单，工作可靠，方便维护。

Automatic welding operation, the welding seam is smooth and exquisite.

The structure is simple, the work is reliable, and the maintenance is convenient.



Various Cartridge Valves

各类插装阀



高效率
High Efficiency



寿命长
Long Life



性能稳定
Stable Performance



精准
Precise

体积小，节省空间，减少受限空间的使用状况。
精密设计，反应迅速方便维护，减少故障发生几率。
结构简单，工作可靠，方便维护。

Small size, save space, reduce the use of confined space.
Precise design, quick response and convenient maintenance, reducing the probability of failure.
The structure is simple, the work is reliable, and the maintenance is convenient.



Standard Valve

标准阀件



电磁单向阀
Solenoid check valve



逻辑阀
Logic valve



单向阀
Check valve



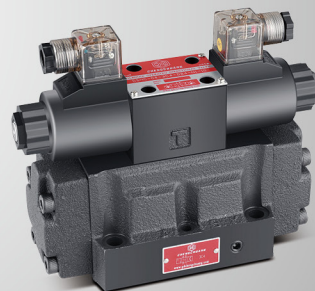
六通径叠加阀
Six-port stacking valve



缓冲阀
Shock valve

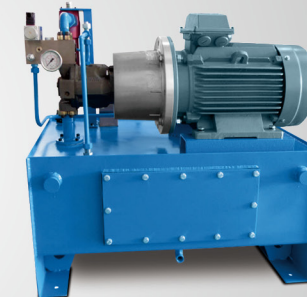
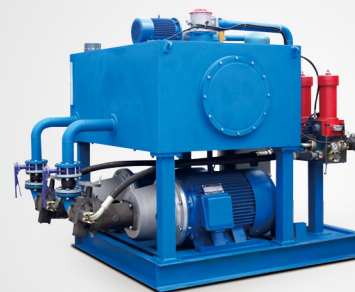
Electromagnetic Directional Valve/Electro-Hydraulic Directional Valve

电磁换向阀 / 电液换向阀



Hydraulic power station

液压泵站



Product Applications

产品应用 >>>

专业制造液压系统设备，提供设计开发及配套的系统和设备，广泛应用于机床、冶金机械、航空航天、测试试验设备、石油机械、港口机械等等十多个行业。

Specializing in manufacturing hydraulic system equipment, providing design, development and supporting systems and equipment, which are widely used in more than ten industries such as machine tools, metallurgical machinery, aerospace, testing and testing equipment, petroleum machinery, and port machinery.

We Provide Services

我们提供服务有 >>>

1. 液压系统的全套设计方案、选型与制造及现场安装调试。
2. 对原有液压系统设备进行维修、改造、升级及终身保修服务。

1. The complete design plan, selection and manufacture of hydraulic system and on-site installation and commissioning.
2. Repair, transform, upgrade and lifetime warranty service for the original hydraulic system equipment.