

六方国际 专注机械画册 400-833-7010



HUITAI TECHNOLOGY

PROFESSIONAL MANUFACTURER OF ALUMINUM ALLOY CASTING EQUIPMENT

铝合金熔铸设备专业制造商

—— 铝合金熔铸设备专业制造商 ——

高速/节能环保/精品质量

佛山市南海区辉泰科技机械有限公司
FOSHAN NANHAI HUITAI TECHNOLOGY MACHINERY CO., LTD.

地址：佛山市南海区狮山镇狮山工业园北园民狮路
Add: Minshi Road, North Park, Shishan Industrial Park, Shishan Town, Nanhai District, Foshan City
电话：0757-86687030 传真：0757-86687029
E-mail: WXL4517@126.com 349642290@qq.com
网址：www.meltingequipment.com www.fshuitai.alu.cn

佛山市南海区辉泰科技机械有限公司
FOSHAN NANHAI HUITAI TECHNOLOGY MACHINERY CO., LTD.

ENTERPRISE INTRODUCTION

企业简介 ▶▶▶

佛山南海自有铝材之乡的美誉，多年的铝加工经验和设备不断的技术革新，造就了铝材之乡的美称。

佛山市南海区辉泰科技机械有限公司通过多年铝材设备的技术沉淀，对铝加工设备矩形熔炼炉，倾翻式熔炼炉，均质炉，冷却炉，三维复合料车，铝合金铸造设备，铸造模具等专业设备集研发生产销售一体的专业化公司，公司自成立以来坚持产品质量就是企业生命。服务于国内外从事铝加工的企业，并与客户建立良好的技术合作关系，不断推出新产品，协助客户对设备不断的完善，为客户创造价值。

公司拥有高级职称工程师 8 名，设计师 6 名，专业客服 12 名，生产员工 115 名，专业设备安装调试人员 20 名，为客户提供整厂规划，设备选型，产品研发，精益生产提供专业的解决方案，专业的设计师拥有多年铝加工经验，对于铝加工工艺及生产提供全面技术支持。公司流程：项目经理洽谈 - 技术规范 - 设计规划 - 项目立案 - 商业洽谈 - 签订合同 - 生产排程 - 设备出厂调试 - 设备运输交付 - 设备现场安装 - 设备现场调试 - 设备试生产 - 设备验收。每个项目及每个流程都有专业工程师严把质量关进行全程跟踪。

公司拥有专业生产设备：折弯机，卷板机，车床，数控加工中心，动平衡测试仪，水平测试仪，水系统测试仪，铸造系统测试仪等专业设备。公司产品销售国内包括广东，山东，河南，内蒙古，上海，江苏，等三十多个省及直辖市，并出口销售至东南亚、中东、非洲、欧洲等地。

公司宗旨：包设计规划 - 包生产制造 - 包安装调试 - 包培训 - 包出产品，专业服务于铝加工客户。

产品优势：设计结构合理，安全，节能高效，环保，操作简单，自动化程度高，控制设备均采用 PLC 自主检查，自动控制，工控机中央控制，具备远程监控，远程诊断，远程维护功能。

佛山市南海区辉泰科技机械有限公司秉承“科技为先导，创造消费新理念；质量是生命，精益求精无止境；服务作保障，用户至上求双赢”的经营宗旨，热情欢迎国内外广大客户的光临指导，让我们与您携手共进，共创辉煌。

Foshan Nanhai has a good reputation as a hometown of aluminum. Years of experience in aluminum processing and continuous technical innovation of equipment have created a good name for the hometown of aluminum.

There are years of experience in aluminum equipment technology from Foshan Nanhai Huitai Technology Machinery Co., Ltd. We are specialized in providing the aluminum rectangle type melting furnace, holding furnace, oblique door melting furnace, regenerative burner system, homogenizing furnace, cooling chamber, three dimension compound lorry (aluminum feedstock charging machine), aluminum billet / hollow billet slab casting machine, hydraulic lifting machine, and so on. From beginning, our company has been taking products quality as the corporate life. We provide superior service to aluminum corporations both at home and abroad markets. We highly value the client relationship by taking technology cooperation, product innovation and asset improvement.

We have a strongly teamwork group, with 8 senior engineers, 6 designers, 12 professional after sale service managers and 20 professional installation commissioning technicians and 115 skilled workers. We provide one shop professional solution service including workshop general arrangement, equipment selection, products R&D, and lean production process optimization. Company procedure: business development - high stage design - business negotiation - sign contract - manufacture - FAT - equipment delivery - equipment site installation - SAT - commissioning - equipment hand over - equipment acceptance. Each project and each process have a professional engineer strict quality control throughout the tracking.

We also have these equipment, including bending machine, plate rolling machine, turning lathe, CNC, dynamic balance tester, horizontal tester, water system tester, casting system tester, and so on. Our clients are around many provinces in China are Guangdong, Shandong, Henan, Inner Mongolia, Shanghai, Jiangsu, etc. Furthermore, our machines are exported to Southeast Asia, Middle East, Africa, Europe and many other countries around of the world.

Company philosophy: we are specialized in providing service for aluminum producers and responsible for design, manufacture, installation, optimizing, training and lean production.

Product advantage: Reasonable design and structure, safety, energy-efficient, environmental-friendly, easy operation, high degree of automation, apply PLC control, self-check for automatic equipment, automatic control, use central control in industrial PC, with functions of remove supervise and control, remote diagnosis and maintenance.

Foshan Nanhai Huitai Technology Machinery Co., Ltd., Advocating the principle: "Technology inspired, create new consumption concept, quality is life, pursuit of perfection, taking service as guarantee, customers first, strive for win-win situation." We warmly welcome customers at home and abroad to visit and guide us, Let us join hands with you to create a mutual brilliant future.

企业成功的秘诀在于对人才、产品、服务三项品质的坚持。

The key to success is come from the persistence of talent, product quality and service.

PRECISION PROCESSING EQUIPMENT

精密加工设备 ▶▶▶

PROVIDE FOLLOW-UP IMPETUS FOR THE SUSTAINABLE DEVELOPMENT OF ENTERPRISES

The special project team is led by the project manager, and has the positions of construction worker, safety officer and material officer. The project management department is responsible for hosting and coordinating the entire construction process and the production plan, quality, safety, duration and comprehensive balance scheduling, and doing a good job in cost accounting to ensure the smooth progress of the project. At the same time, the team will solve the problems and difficulties in the construction for the first time, so as to achieve high quality and efficient construction according to the drawings.



为企业持续发展提供后续动力

专项项目组由项目经理牵头，下设施工员、安全员、材料员等职务。项目经理部负责主持和协调整个施工过程和生产计划、质量、安全、工期及综合平衡调度，做好成本核算，保证项目顺利进行。同时该团队将第一时间解决施工中出现的的问题和难题，做到优质高效，按图施工。

创新求精

不断提升产品与服务的质量，满足客户要求，促进公司快速发展。

节能降耗

注重环境保护与污染预防，促进公司协调发展。

PATENT CERTIFICATE

专利证书 >>>



CATALOGUEEPH

目录 >>>

01-02

生产流程图
PRODUCTION FLOW CHART

03-04

熔铸车间布局
CASTING WORKSHOP LAYOUT

05-26

熔炼炉系列
MELTING FURNACE SERIES

27-36

均质炉系列
HOMOGENEOUS FURNACE SERIES

37-42

铸造系统
THE CASTING SYSTEM

43-44

控制柜
CONTROL CABINET

45-46

零配件
SPARE PARTS

47-48

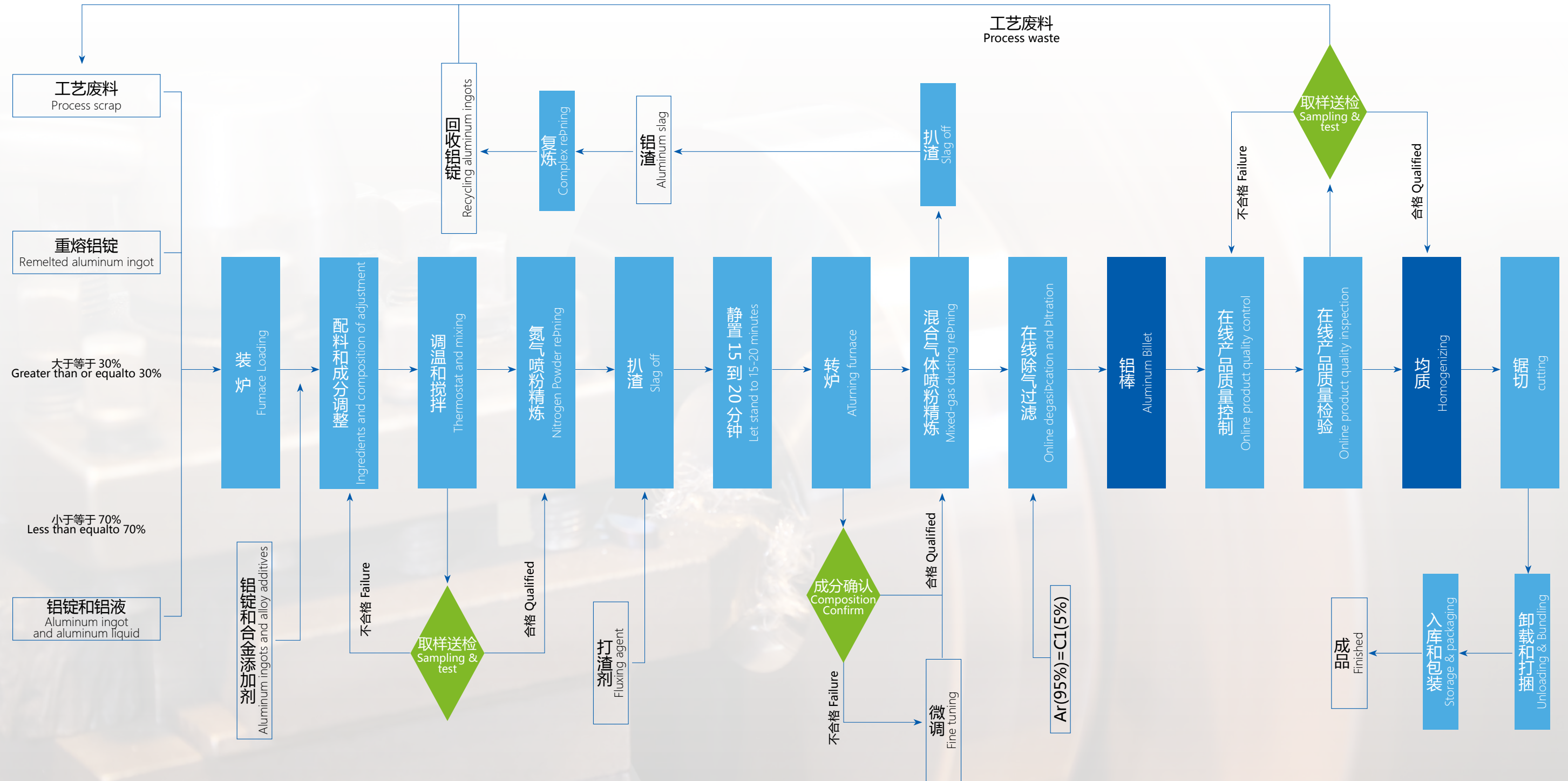
辅助设备
AUXILIARY EQUIPMENT

49-52

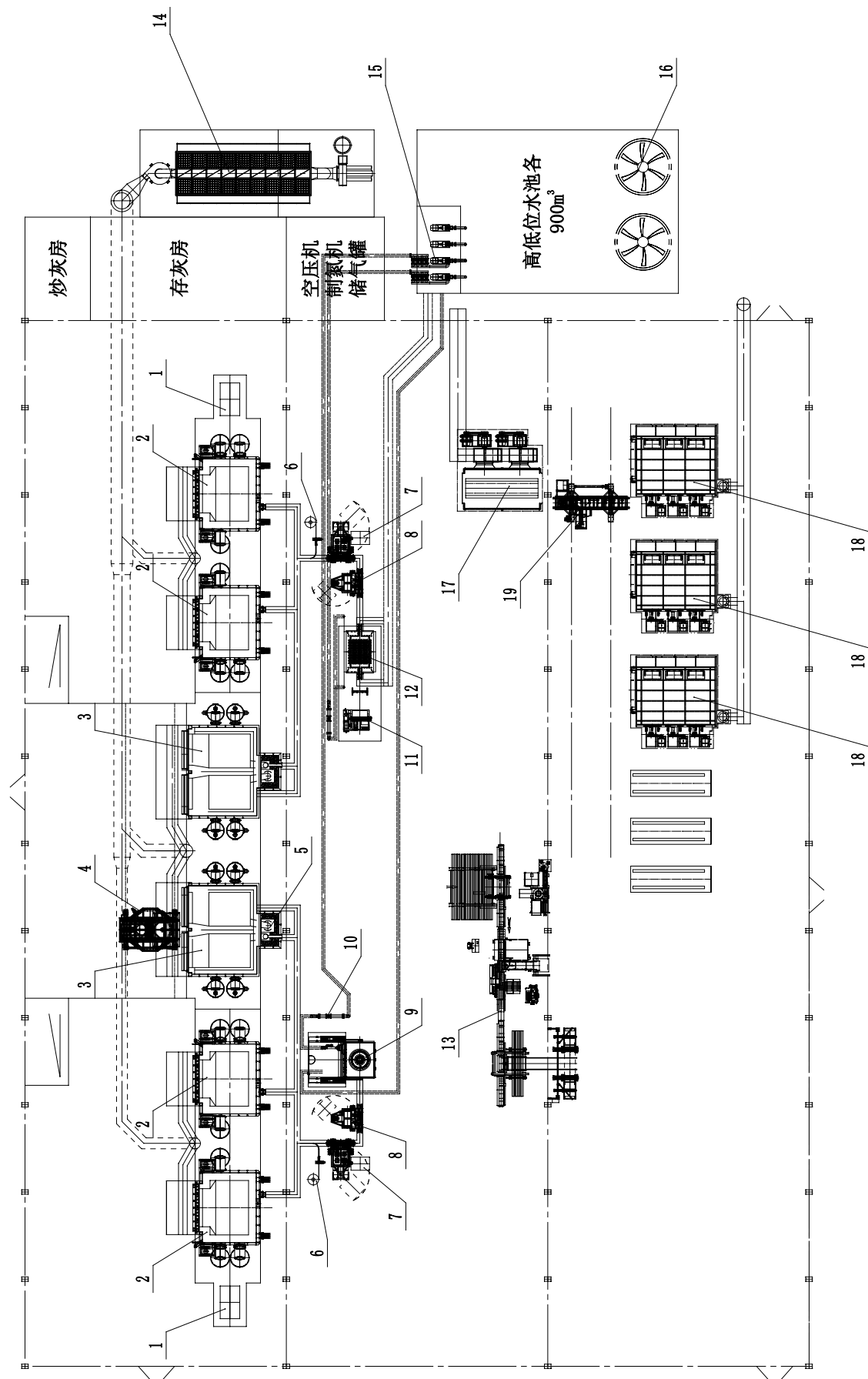
工程案例
PROJECT CASE

PRODUCTION FLOW CHART

生产工艺流程图 ▶▶▶



熔铸车间布局
LAYOUT OF CASTING
WORKSHOP



我司不仅我们的客户提供质量上乘的设备和优质的服务，同时也为客户提供设备布局设计。我们将根据客户的厂房布局特点和针对每个客户各自的独特要求，再结合我们多年来积累的的厂房设计实践经验来设计设备布局图，从而实现熔铸车间的设备摆放合理，工作流程衔接顺畅利于提供生产效率，材料运输方便快捷和空间利用率最大化。

我们的布局图和设备基础图在发给客户之前都必须经过层层严格的审核，确保每个客户项目工程的精确和精准，以免造造成不必要的资源浪费。

We are not only supply best quality machinery and superior service, but also supply the machinery layout drawing design for our clients. According to clients' plant layout characteristic and every client special requirement, we take full advantage of our years practical experience to design the machine layout drawing for them. So the machine placement in the casthouse will be reasonable; the process of melting and casting work will be smooth and joined together to improve the production efficiency; material transportation will be more convenient and plant space utilization will be maximized.

Before sending our drawing to clients, every drawing of layout or foundation, we must check carefully and confirm strictly to ensure every drawing is correct and every client's project should be accurate enough to avoid any unnecessary waste.

设备清单

The Equipment List

- | | |
|--------------|--|
| (1) 电磁搅拌装置 | (1) Electromagnetic stirrer |
| (2) 再生式倾动炉 | (2) Regenerative tilting furnace |
| (3) 再生式双室炉 | (3) Regenerative double chamber furnace |
| (4) 熔炉加料车 | (4) Charging machine for melting furnace |
| (5) 机械铝液泵 | (5) Aluminum scarp pump |
| (6) 喂丝机 | (6) AlTiB feeder machine |
| (7) 在线除气机 | (7) on-line degassing system |
| (8) 电保温过滤箱 | (8) Electric heating filter box |
| (9) 液压铸造机 | (9) Hydraulic casting machine |
| (10) 自动铸造水系统 | (10) PLC automatic casting water system |
| (11) 钢丝绳铸造机 | (11) Wire rope casting machine |
| (12) 热顶铸造平台 | (12) Hot-top casting table |
| (13) 铝棒锯切机 | (13) Aluminum billet cutting saw machine |
| (14) 除尘设备 | (14) Dust removal equipment |
| (15) 水泵 | (15) The water pump |
| (16) 冷却塔 | (16) The cooling tower |
| (17) 冷却室 | (17) Cooling chamber |
| (18) 均质炉 | (18) Homogeneous furnace |
| (19) 三维复合料车 | (19) 3D charging car |



熔炼炉系列
MELTING FURNACE SERIES



双室炉 - 固定直炉门 ▶▶
DUOUBLE CHAMBER FURNACE STATIONARY TYPE WITH VERTICAL DOOR



技术参数 Technical Parameters

产能	25-150吨	Capacity	25-150t
炉门类型	直炉门	Furnace Door Type	Vertical door
炉型	固定式	Furnace Type	Stationary
熔化率	2-8吨铝/小时	Melting Rate	2-8t Al. / hour
气压	65-100KPa	Air Pressure	65-100KPa
温度准确度	±5°C	Temperature Accuracy	±5°C
燃气消耗范围	≥52立方米/吨*铝	Gas Consumption Scope	≥52m ³ /t*aluminum
最高工作温度	1150°C	Highest Working Temperature	1150°C
最高控制温度	1100°C	Highest Temperature Control	1100°C

特点:

- 铝废料的预热、干燥和熔化均不在火焰的直接猛烈的燃烧之下进行的，金属烧损少；
- 在整个熔炼过程中，熔体通过循环式搅拌机进行循环，因而熔体温度和成分均匀；
- 由于采用新式节能燃烧系统，全部烟气均进行余热回收，热效率高，能耗低；
- 铝废料是在一个密闭的系统加入的，无烟气溢放到车间，工作环境较好。

Characteristics :

- Aluminum scrap preheating, drying and melting are not directly under the flames of fierce burning, less metal burning loss;
- In the whole melting process, the melt through the circulating mixer for circulation, so the melt temperature and composition uniformity;
- Because of the adoption of new energy-saving combustion system, all flue gas are residual heat recovery, high thermal efficiency, low energy consumption.
- Aluminum scrap material is added in a closed system, no smoke overflow into the workshop, the working environment is good.



双室炉 - 固定斜炉门 ▶▶
DUOBLE CHAMBER FURNACE STATIONARY TYPE WITH DIAGONAL DOOR



熔炼炉系列
 MELTING FURNACE SERIES

09 / 10

技术参数 Technical Parameters

产能	25-150吨	Capacity	25-150t
炉门类型	斜炉门	Furnace Door Type	Diagonal door
炉型	固定式	Furnace Type	Stationary
熔化率	2-8吨铝/小时	Melting Rate	2-8t Al. / hour
气压	65-100KPa	Air Pressure	65-100KPa
温度准确度	±5°C	Temperature Accuracy	±5°C
燃气消耗范围	≥52立方米/吨*铝	Gas Consumption Scope	≥52m³/t*aluminum
最高工作温度	1150°C	Highest Working Temperature	1150°C
最高控制温度	1100°C	Highest Temperature Control	1100°C

特点:

- 铝废料的预热、干燥和熔化均不在火焰的直接猛烈的燃烧之下进行的，金属烧损少；
- 在整个熔炼过程中，熔体通过循环式搅拌机进行循环，因而熔体温度和成分均匀；
- 由于采用新式节能燃烧系统，全部烟气均进行余热回收，热效率高，能耗低；
- 铝废料是在一个密闭的系统加入的，无烟气溢放到车间，工作环境较好。

Characteristics :

- Aluminum scrap preheating, drying and melting are not directly under the flames of fierce burning, less metal burning loss;
- In the whole melting process, the melt through the circulating mixer for circulation, so the melt temperature and composition uniformity;
- Because of the adoption of new energy-saving combustion system, all flue gas are residual heat recovery, high thermal efficiency, low energy consumption.
- Aluminum scrap material is added in a closed system, no smoke overflow into the workshop, the working environment is good.



固定式直炉门熔铸炉 ▶▶
STATIONARY TYPE WITH VERTICAL DOOR MELTING FURNACE

技术参数 Technical Parameters

产能	5-60吨	Capacity	5-60t
炉门类型	直炉门	Furnace Door Type	Vertical door
炉型	固定式	Furnace Type	Stationary
熔化率	2-8吨铝/小时	Melting Rate	2-8t Al. / hour
气压	65-100KPa	Air Pressure	65-100KPa
温度准确度	±5°C	Temperature Accuracy	±5°C
燃气消耗范围	≥52立方米/吨*铝	Gas Consumption Scope	≥52m ³ /t*aluminum
最高工作温度	1050°C	Highest Working Temperature	1050°C
最高控制温度	1100°C	Highest Temperature Control	1100°C

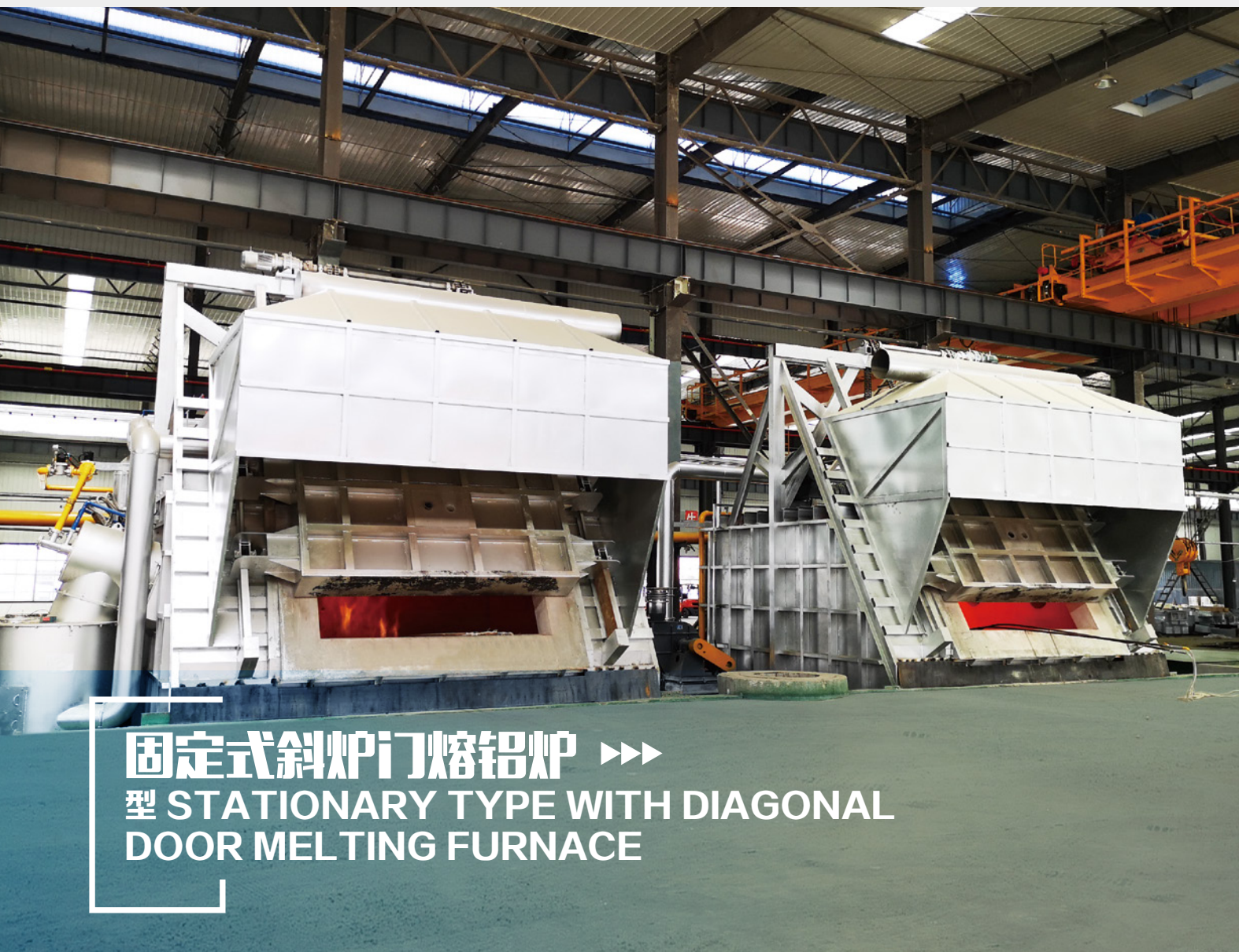


特点:

- 炉口设计范围大 (2.5m-6.5m) ，能够方便不同用户要求。
- 能耗较低，最低气耗可低至52立方米/吨*铝 (按天然气计算) 。
- 使用再生式燃烧系统，废气排放温度低，约250摄氏度，从而减少从炉体带走的余热，减少能耗。
- 温度控制方法：热电偶非连续测温，自动调节火力。

Characteristics :

- Large range of low front design (2.5 m to 6.5 m), convenient to different user requirements.
- Low power consumption is low, low gas consumption can be low to 52 m³ / ton * aluminum (press) of computation of natural gas.
- Use of regenerative combustion system, exhaust temperature is low, about 250 degrees Celsius, to reduce the heat away from the furnace, reducing energy consumption.
- Low temperature control methods: thermocouple of continuous temperature measurement, automatic regulating firepower.



固定式斜炉门熔铝炉 型 STATIONARY TYPE WITH DIAGONAL DOOR MELTING FURNACE

技术参数 Technical Parameters

产能	5-60吨	Capacity	5-60t
炉门类型	斜炉门	Furnace Door Type	Diagonal door
炉型	固定式	Furnace Type	Stationary
熔化率	2-8吨铝/小时	Melting Rate	2-8t Al. / hour
气压	65-100KPa	Air Pressure	65-100KPa
温度准确度	±5°C	Temperature Accuracy	±5°C
燃气消耗范围	≥55立方米/吨*铝	Gas Consumption Scope	≥55m ³ /t*aluminum
最高工作温度	1050°C	Highest Working Temperature	1050°C
最高控制温度	1100°C	Highest Temperature Control	1100°C



特点:

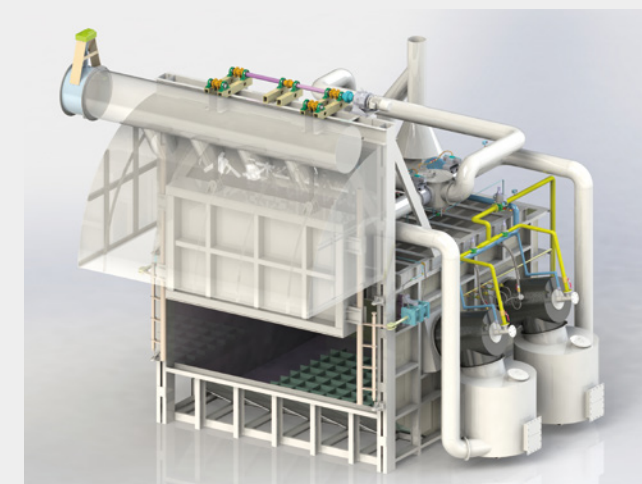
- 固定式斜炉门的结构简单，炉口设计范围小（1.5m-3.5m），能方便客户的不同需求
- 固定式斜炉门的气耗在55立方米/吨*铝(按天然气计算)。
- 使用再生式燃烧系统，废气排放温度低，约250摄氏度，从而减少从炉体带走的余热，减少能耗。
- 温度控制方法：热电偶非连续测温，自动调节火力。
- 这款炉型的密封性没有直炉门好，通过炉门自重进行密封压紧。

Characteristics :

- Low fixed inclined oven door structure is simple, the oven design scope of small (1.5 m to 3.5 m), can the different needs of customers.
- Low fixed inclined oven gas consumption in 55 m³ / ton * aluminum (press) of computation of natural gas.
- Use of regenerative combustion system, exhaust temperature is low, about 250 degrees Celsius, to reduce the heat away from the furnace, reducing energy consumption.
- Temperature control method: Thermocouple non-continuous temperature measurement, automatic adjustment of firepower.
- The sealing performance of this furnace type is not as good as that of the straight furnace door, and it is sealed and pressed by the weight of the furnace door.



倾动式熔铝炉 ▶▶
TILTING TYPE MELTING FURNACE



技术参数 Technical Parameters

产能	15-60吨	Capacity	15-60t
炉门类型	倾动式熔铝炉	Furnace Door Type	Tilting type melting aluminum furnace
炉型	倾动式	Furnace Type	Tilting
熔化率	4-8吨铝/小时	Melting Rate	4-8t Al. / hour
气压	65-100KPa	Air Pressure	65-100KPa
温度准确度	±5°C	Temperature Accuracy	±5°C
燃气消耗范围	≥52立方米/吨*铝	Gas Consumption Scope	≥52m ³ /t*aluminum
最高工作温度	1050°C	Highest Working Temperature	1050°C
最高控制温度	1100°C	Highest Temperature Control	1100°C

特点:

- 能控制金属液的流量，可用传感器测量炉内液体金属的重量，以便准备地配制合金。当用于静置炉时，可准确控制铸造过程中的金属液面。
- 根据需要可设计成单侧和两侧倾动。
- 容易运转和操作。
- 可以在短时间内洗炉和更换合金品种。

Characteristics :

- Can control the flow of liquid metal, the available sensors measuring the weight of the liquid metal in the furnace, so as to prepare compound alloy. When to leave the furnace can be controlled accurately The metal level in the process of casting.
- Low according to the need can be designed into unilateral and bilateral tilting.
- Easy to operation and operation.
- To in a short period of time to wash the furnace and replace the varieties of alloy.



固定式保温炉 >>>
FIXED HOLDING FURNACE



特点:

- 结构简单，容易维护。
- 温度控制精确。
- 保温性能好。
- 因为保温炉的组成跟熔化炉一致，所以在应急情况下，可短时间代替熔化炉保障生产。

Characteristics :

- Simple structure, easy to maintain.
- Low temperature control precision.
- Low heat preservation performance is good.
- Since the composition of holding furnace with melting furnace is consistent, so in emergency cases, instead of melting furnace to ensure the production can be a short time.

技术参数 Technical Parameters

产能	1-60吨/ (铝水)	Capacity	1-60t/ (aluminum water)
燃料	柴油，重油，天然气，液化石油气，城市煤气	Fuel	Diesel, heavy oil, natural gas, liquefied petroleum gas, city gas
控制方式	PLC全自动和手动	Control Mode	PLC full automatic and manual
炉门结构	直炉门和斜炉门	Furnace Door Type	Vertical door and diagonal
炉子形状	方形、圆形	Furnace Shape	Square, round
炉顶结构	平顶、拱顶、圆顶开盖式	Roof Structure	Flat top, vault, dome type
炉体结构	固定式、倾动式	Furnace Body Structure	Fixed and Tilting

倾动式保温炉

TILTING TYPE HOLDING FURNACE



技术参数 Technical Parameters

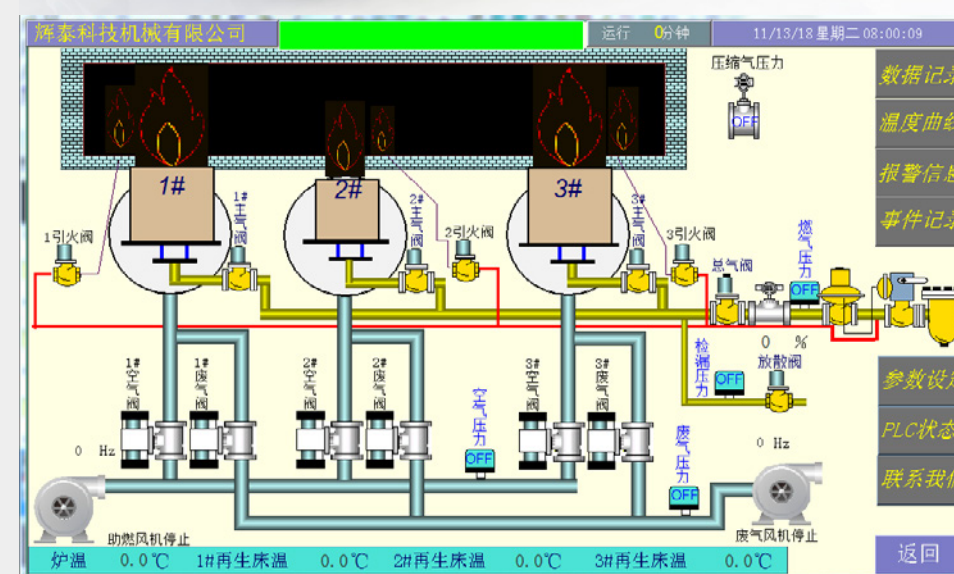
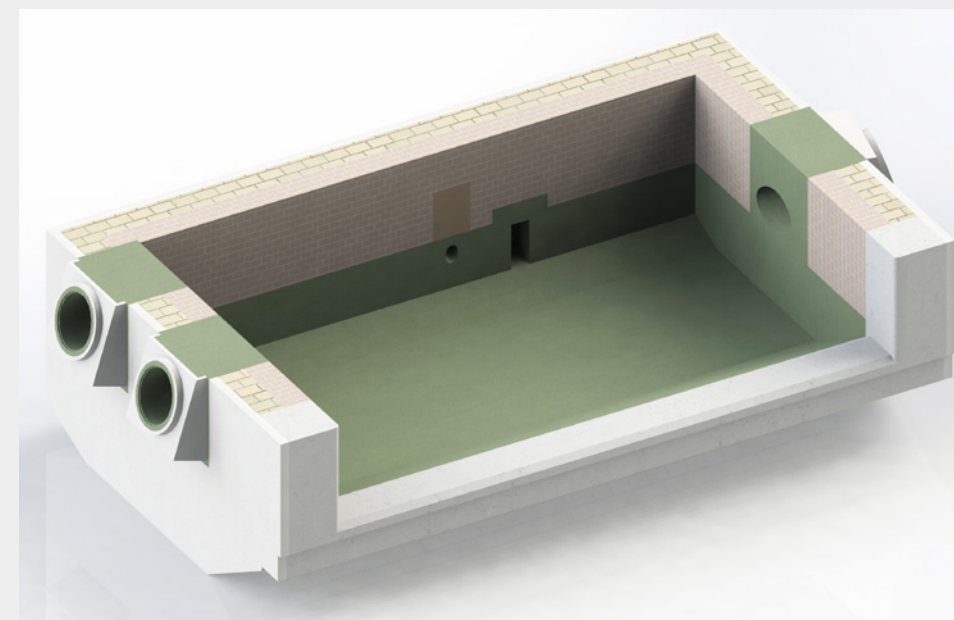
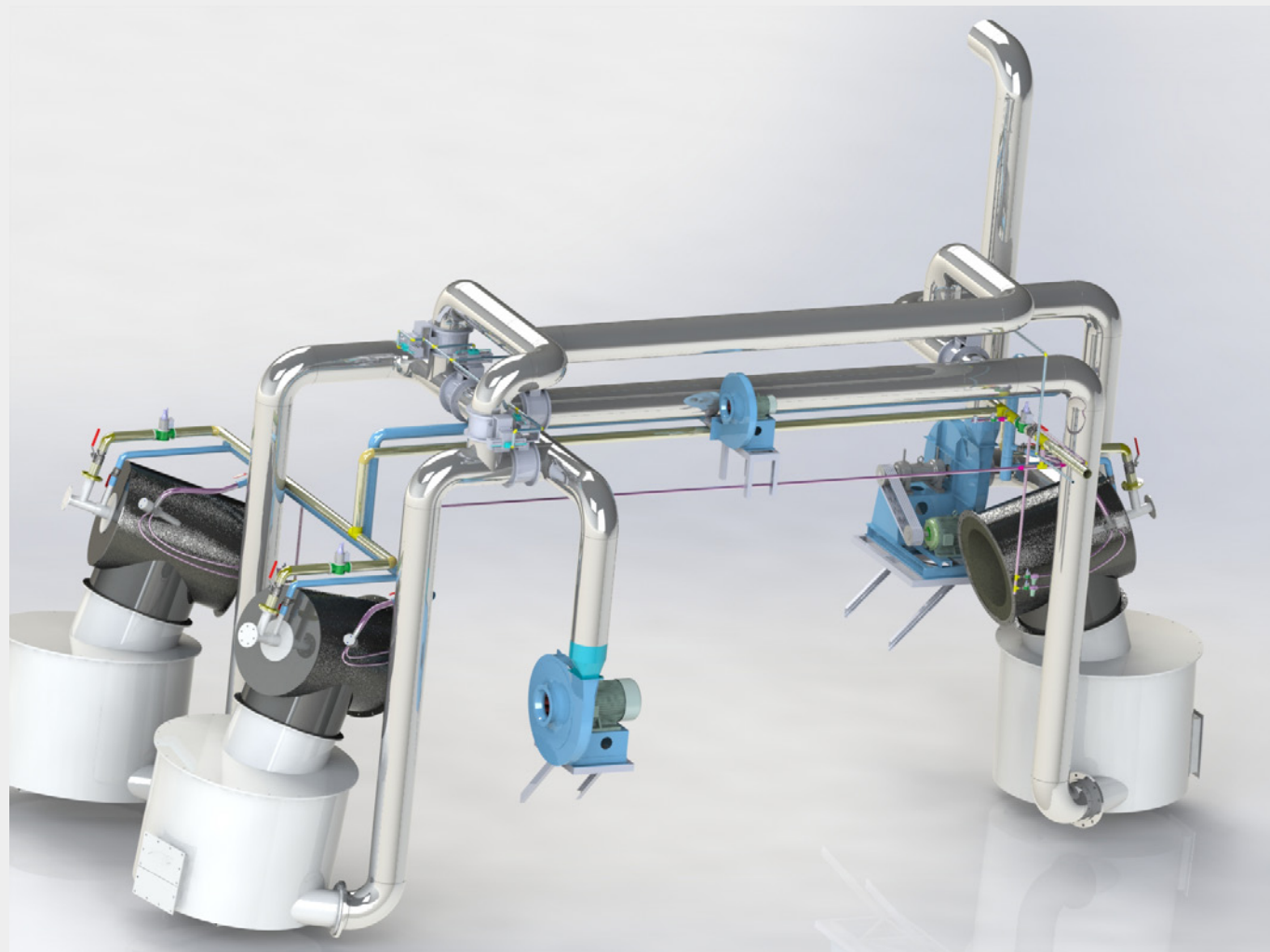
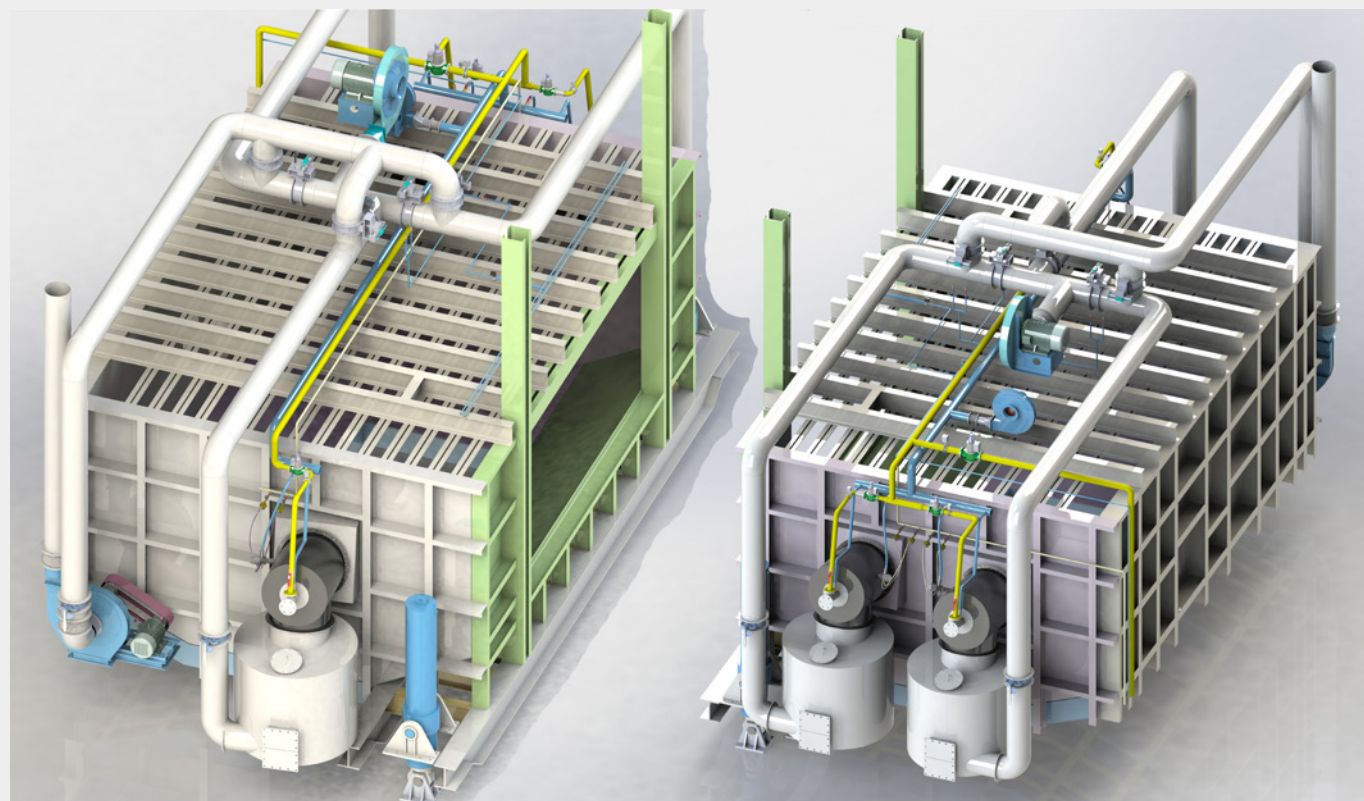
产能	15-60吨	Capacity	15-60t
炉门类型	倾动式熔铝炉	Furnace Door Type	Tilting type melting aluminum furnace
炉型	倾动式	Furnace Type	Tilting
熔化率	4-8吨铝/小时	Melting Rate	4-8t Al. / hour
气压	65-100KPa	Air Pressure	65-100KPa
温度准确度	±5°C	Temperature Accuracy	±5°C
燃气消耗范围	≥52立方米/吨*铝	Gas Consumption Scope	≥52m ³ /t*aluminum
最高工作温度	1050°C	Highest Working Temperature	1050°C
最高控制温度	1100°C	Highest Temperature Control	1100°C

特点:

- 能控制金属液的流量，可用传感器测量炉内液体金属的重量，以便准备地配制合金。当用于静置炉时，可准确控制铸造过程中的金属液面。
- 根据需要可设计成单侧和两侧倾动。
- 容易运转和操作。
- 可以在短时间内洗炉和更换合金品种。

Characteristics :

- Can control the flow of liquid metal, the available sensors measuring the weight of the liquid metal in the furnace, so as to prepare compound alloy. When to leave the furnace can be controlled accurately The metal level in the process of casting.
- Low according to the need can be designed into unilateral and bilateral tilting.
- Easy to operation and operation.
- To in a short period of time to wash the furnace and replace the varieties of alloy.



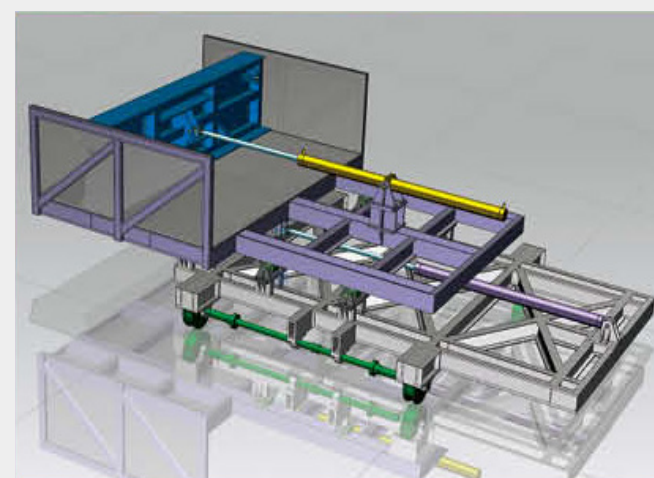
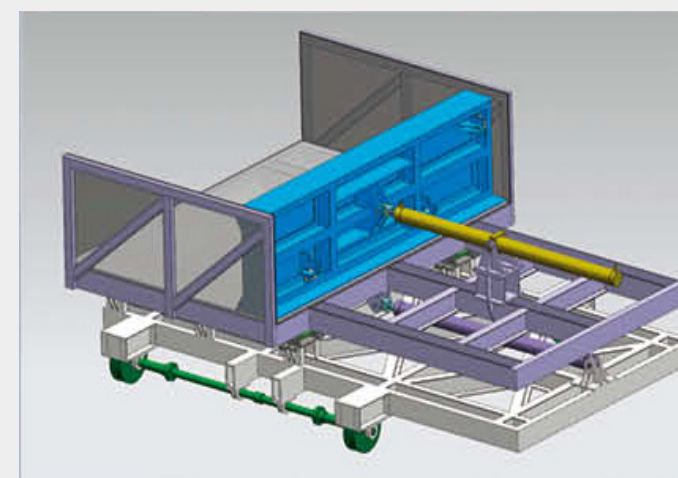
三烧嘴燃烧系统原理：

高效燃烧来自于三个烧嘴周期性交替地燃烧，从而用烟气加热空气，获得高温助燃空气。当一个烧嘴燃烧时，烟气通过另二个烧嘴，加热其中的蓄热介质。当这种蓄热介质被加热后此烧嘴开始燃烧，原来燃烧的烧嘴开始抽吸并排放烟气。助燃空气流经高温的蓄热介质时而被加热。空气预热温度可达燃烧烟气温度的300°F (149°C)以内，从此获得极高加热效率。

Principle of three-burner combustion system:

The efficient combustion comes from the periodic alternation of the three burners, so that the flue gas is used to heat the air and obtain the high-temperature combustion air. When one burner burns, the flue gas passes through the other two, heating the heat storage medium therein. When the regenerative medium is heated, the burner begins to burn, and the burner begins to smoke and discharge smoke. Combustion air is heated when it passes through a high temperature storage medium. The air preheating temperature of combustion which is flue gas temperature should be reached not higher than 300 ° F (149 ° C), hence the extremely high heating efficiency.

熔炼炉加料车
FURNACE CHARGING CAR



技术参数 Technical Parameters

用途	为熔化炉快速加料，可以有效提高加料速度，降低能耗	Usage	Quickly provide feedstock to meting furnace. It can increase the feeding speed and reduce the energy consumption.
设备结构	双层、整机横向轨道行走、纵向液压推料	Sructure of Device	Double layer, the whole machine horizontal movenent the lengthways hydraulic pushing
斗上料方式	叉车直接送入	Feedstock Loading Method	Forkift loading directly

特点:

- 加料量大结构简单、使用方便、运行平稳、安全可靠。
- 采用双层横向运行结构，比纵向运行式结构占地面积小。
- 进料采用二次进给方式，即先由进料斗进给装置将进料斗推入炉膛内，再由液压推料装置将废铝料入熔地内进行培化。

Characteristics :

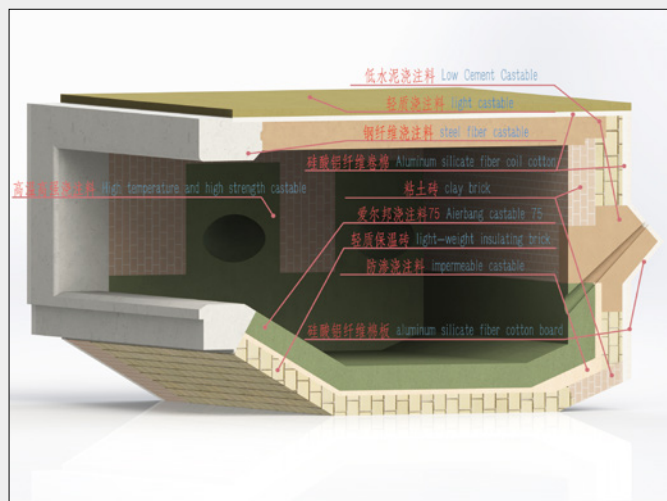
- Big feeding capacity , simple structure, easy to operate,stable running, safe and reliable.
- The double lateral operation structure, smaller cover areathan the lenthways operation structure.
- Machine adopts secondary feeding materil type: at the first,the hopper is sent into furace hearth by feeding device, then the aluminum scrap is pushed into the furnace pool by hydraulicpaishing device.

炉子内衬施工

Furnace liners construction

全浇注 / 半浇注内衬施工

Full castable/Semi-castable



浇注料特点:

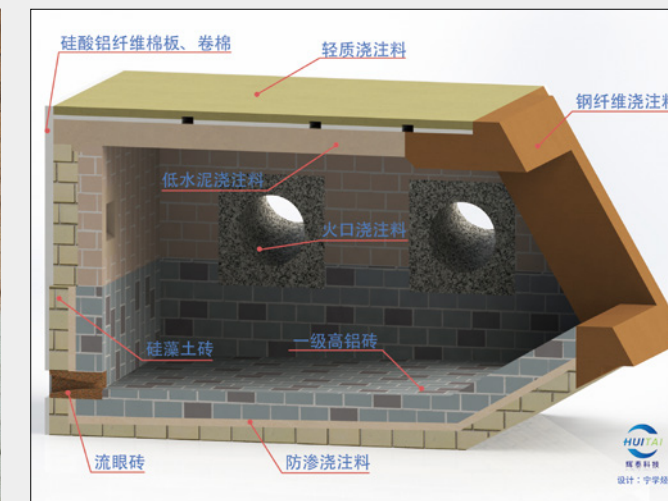
- 使用寿命比砌砖结构长。
- 炉体整体保温效果好,热量损失低。
- 结构稳定,维护方便。
- 生产操作方便。

Characteristics of castable lining:

- The service life is longer than bricks structure.
- Furnace heat insulation effect is excellent, less heat energy lost.
- Stable structure and easy maintenance.
- Convenient to operate.

砖结构内衬施工

Bricks



砖砌炉体的特点:

- 适用于任何的炉型及任何合金。
- 施工、维修方便,维修费用低。
- 性价比高,更适用于普通经济型炉型。

Characteristics Of Brick Furnace Lining:

- Be suitable far any furnace and any alloy.
- Construction and maintance is convenient and low maintance cost.
- Every part of furnace lining will be builded according to different prcess and requirements.



均质炉系列

HOMOGENEOUS FURNACE SERIES

27 / 28

均质炉系列 >>>
HOMOGENEOUS FURNACE SERIES



均质炉
HOMOGENEOUS FURNACE

技术参数 Technical Parameters

设备组成	由均热炉、冷却室、三维装料车和储料台组成	Equipment	The utility model is composed of a soaking pit furnace, a cooling chamber, a three-dimensional charging car and a charging platform
产能	8-60吨	Capacity	8-60t
炉型	固定式	Furnace	Stationary
气压	65-100KPa	Air Pressure	65-100KPa
温度准确度	±5°C	Temperature Accuracy	±5°C
燃料能耗	柴油：23-30kg/t铝棒 天然气：25-35m³/t铝棒	Energy Consumption of Fuel	Diesel fuel: 23-30kg/t aluminum rod Natural gas: 25-35m³ /t aluminum rod
最高工作温度	650°C	Highest Working Temperature	650°C
最高控制温度	650°C	Highest Temperature Control	650°C



均质炉是指铝棒铸造后进行热处理的均质化专用设备，旨在消除铸锭时产生的残余应力和金相组织的不均匀，进而改善后工序的挤压加工工艺性能，提高生产效率和提高铝型材产品的质量。

全套设备采用 PLC 和触摸屏全自动控制。即可用于挤压用（铝棒）的均匀化处理，也可用于压延方锭的均匀化处理。



The homogenizing furnace refers to a special homogenizing equipment for heat treatment after casting aluminum rods, aiming at eliminating the residual stress and the unevenness of the metallographic structure generated during the ingot casting, thereby improving the extrusion processing performance of the post-process and improving the production efficiency. And improve the quality of aluminum profiles.

The complete set of equipment is fully automatic controlled by PLC and touch screen. It can be used for homogenization of extrusion (aluminum rod), and it can also be used for homogenization of calendered ingots.



均质炉冷却室 ▶▶
HOMOGENEOUS FURNACE COOLING CHAMBER



技术参数 Technical Parameters

承载吨位	1-60吨	Capacity	1-60t
送棒方式	三维复合料车运送铝棒	Billet Feeding Type	Three-dimensional composite truck transporting aluminum rods
循环风机	双速或者变频控制循环风机	Circulating Fan	Double speed or frequency converting control
冷却方式	风冷、风冷+水冷	Cooling Type	Air cooling, air cooling+water cooling
用途	铝棒均质后冷却	Application	Cool down the billet after homogenized

特点:

均质炉冷却室是用于均质以后的铝棒快速冷却。冷却室是由Q235钢或201不锈钢构成，采用风冷或者风冷加水冷的方式对铝棒进行冷却，可以实现一次性冷却10吨-50吨铝棒。当然，我们还可以根据客户的要求进行定制。

Characteristics :

Homogeneous furnace cooling chamber is used for homogeneous after rapid cooling bar. Cooling chamber is made of Q235 steel or 201 stainless steel, the air-cooled chiller or the manner of the water-cooled aluminum rods for cooling, can realize one-time cooling 10 tons to 50 tons of aluminum rod. Of course, we can also be customized according to customer's request.

均质炉加料车 >>>
HOMOGENEOUS FURNACE
CHARGING CAR



技术参数 Technical Parameters

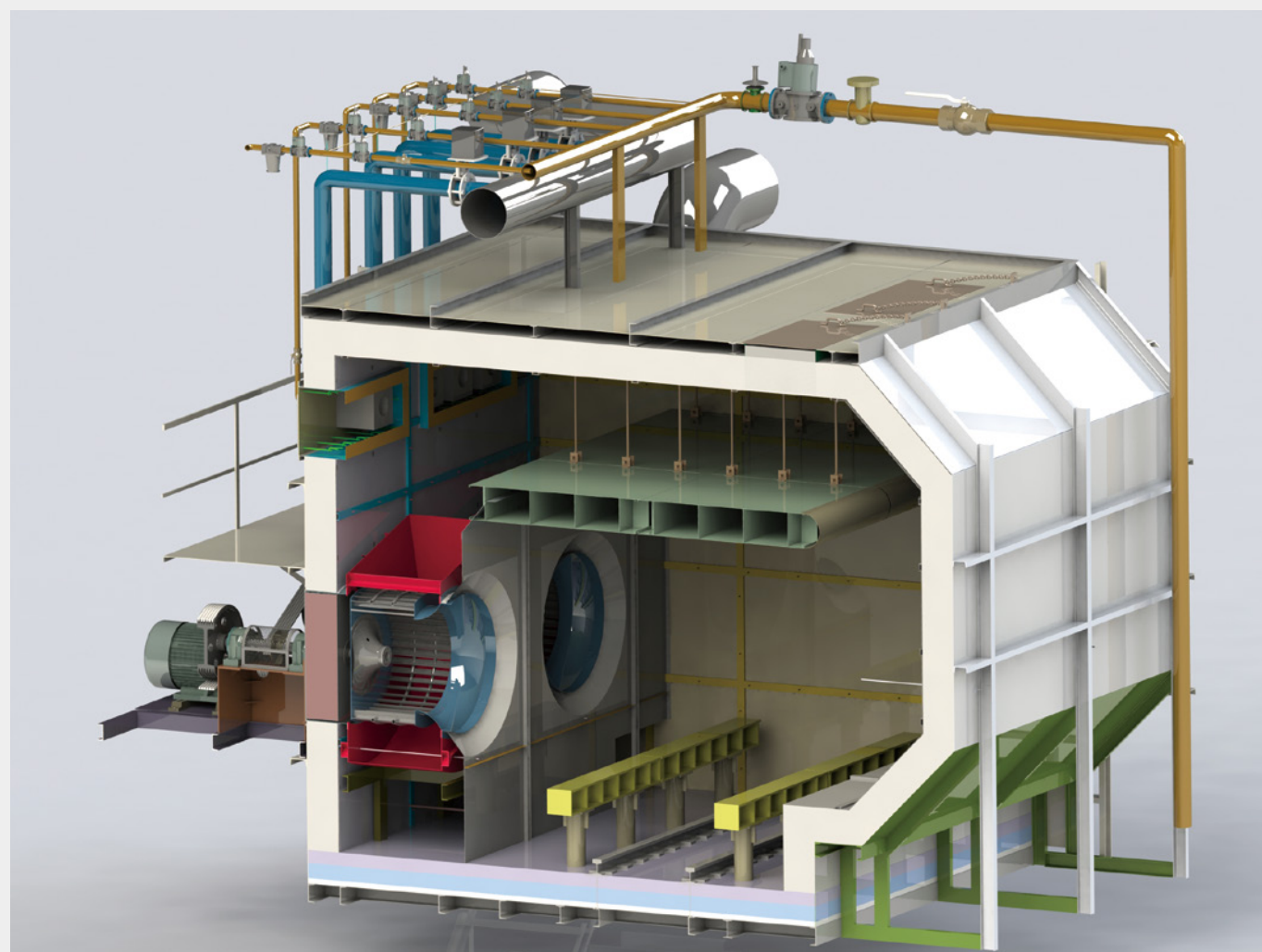
承载吨位	8-60吨	Capacity	8-60t
适用铝棒长度	1-10米	Available Billet Length	1-10m
小车动力	液压	Small Car Driving Force	Hydraumatic
大车动力	液压	Big Car Driving Force	Hydraumatic

特点:

- 可以多台均质炉公用一台料车。
- 复合料车采用液压比例调整可以使料车慢速停止，使之对中准确，对中精度等于或小于5mm。
- 料车使用钢材构造，坚固不易变形。

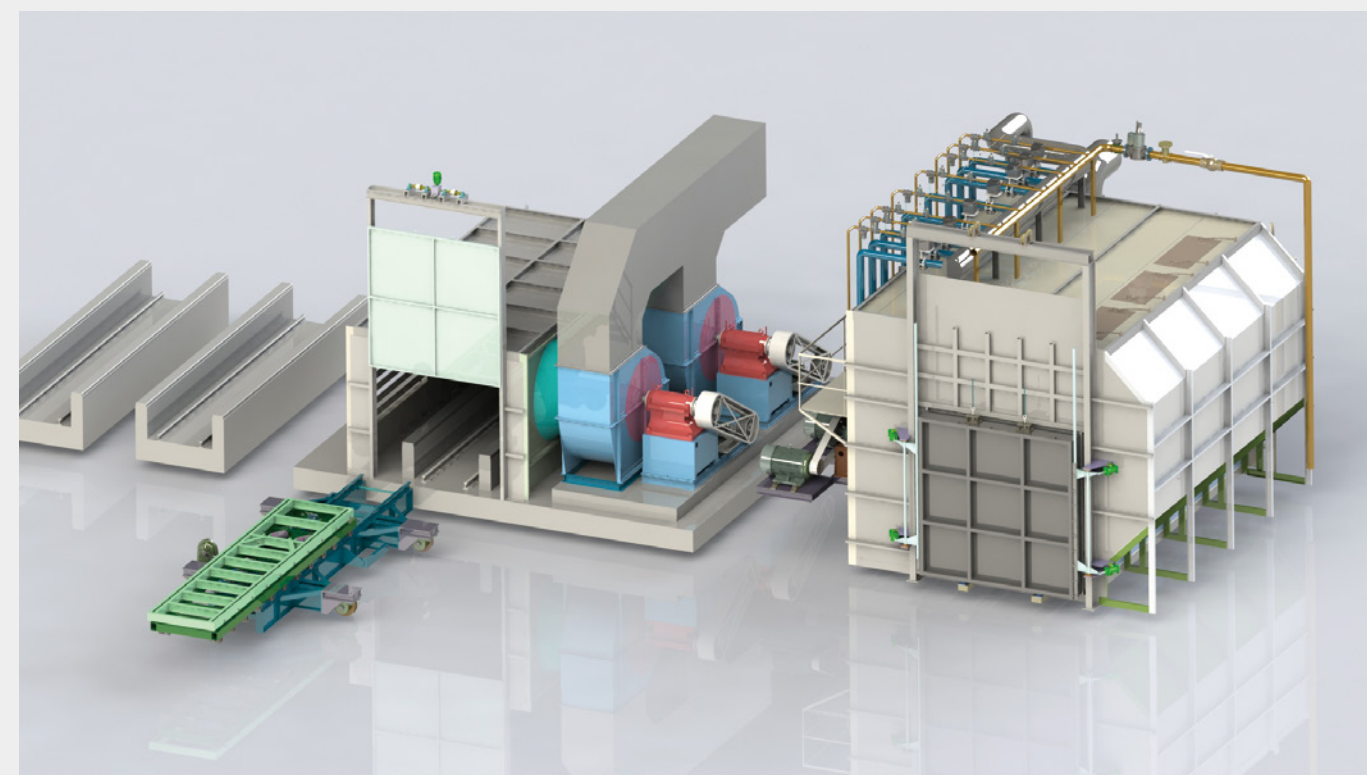
Characteristics :

- It is possible to use one homogenizing furnace to share one skip.
- Low composite furnace adopts hydraulic proportion adjustment can make the skip slow stop, make it to the accurate, to the precision is equal to or less than 5 mm.
- Skip the use of steel structure, strong out of shape not easily.



均质炉燃烧系统

均质炉采用高速烧嘴加热及控温，加料后以一定的负荷升温一段时间，以减少炉子膨胀速度。然后转入全负荷加热，达到限制温度各区关一支烧嘴，转到控温阶段后再关一烧嘴，最后余下两支烧嘴控温，由于火焰无级可调，故控温很准。整套燃烧系统由风机、风管、高压点火系统、压力表、电磁阀、风/气比例阀等组成。整套燃烧系统由PLC自动操作，改变程序可改变升温模式。



Burning System

The homogenizing furnace uses high speed burner for heating and temperature controlling, when the material added, the temperature goes up under a certain burden for a period reducing the inflation speed of the furnace. Then turn to a full-load for heating. when arrived the limited temperature, close one burner for each zone, when turn to another temperature controlling step close another burner again. Finally only two burners left. For there is no adjusting stage for fire, it can control the temperature exactly. A complete burning system consist of air fan, air fan tube and high pressure ignition system, pressure meter, solenoid valve, and air/gas rate valve, and this system can be automatically controlled by PLC. It can change the temperature-up mode through changing program.



铸造系统 >>>
CASTING SYSTEM

钢丝绳铸造系统 >>> WIRE ROPE CASTING SYSTEM

基本介绍:

铸造机用于铝棒垂直铸造时作牵引作用。主要由电机，减速机，卷筒，机架组成。由变频器控制速度。自动化高，速度精确。

Basic introduction :

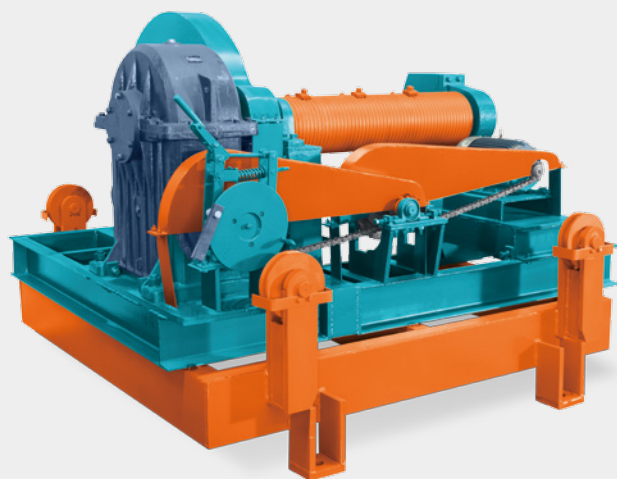
Casting machine is used for vertical casting of aluminum bar for traction. It is mainly composed of motor, reducer, drum and frame. The speed is controlled by a frequency converter. High automation and accurate speed.

特点:

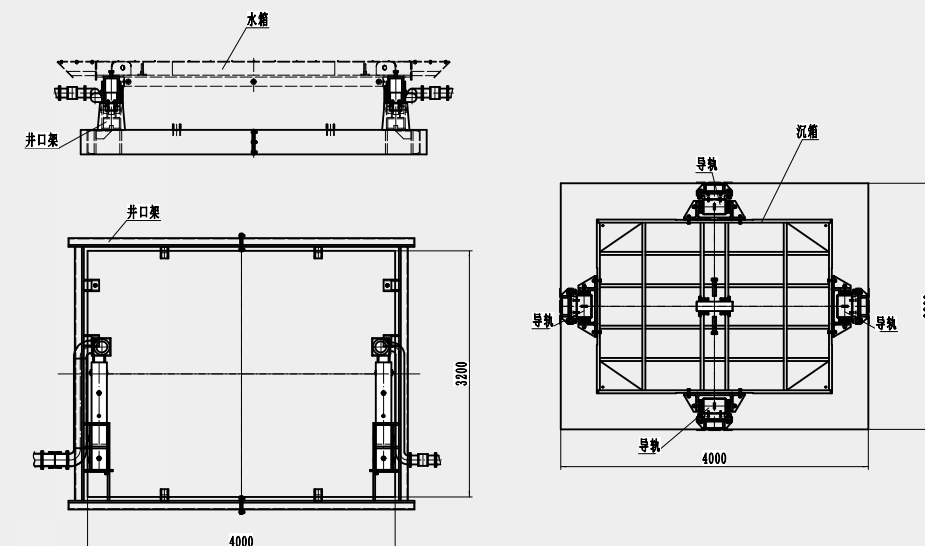
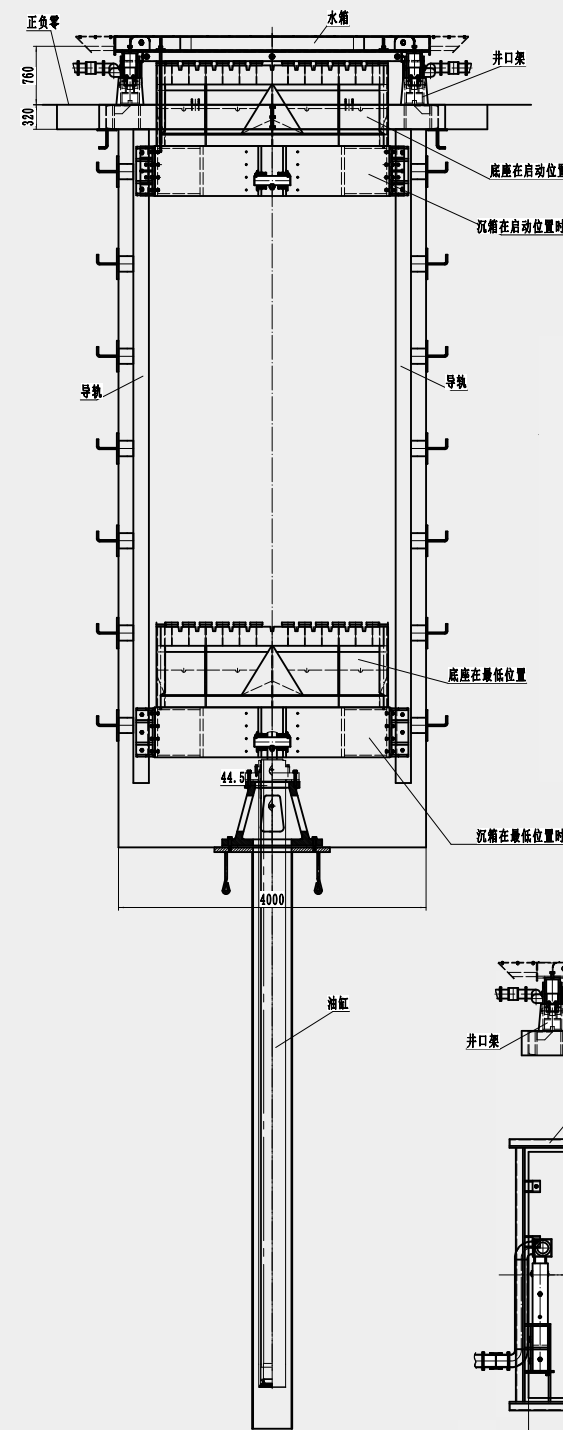
- 吨位选择多，5-45吨。
- 自动化精度高，速度控制精确（通过变频器控制，能做到自动化精度高，速度控制精确）。
- 结构简单，容易维护。

Characteristics :

- Many tonnage options, 5-45 tons.
- High automation precision and accurate speed control (high automation precision and accurate speed control can be achieved through frequency converter control).
- Simple structure and easy maintenance.



液压铸造 >>> HYDRAULIC CASTING

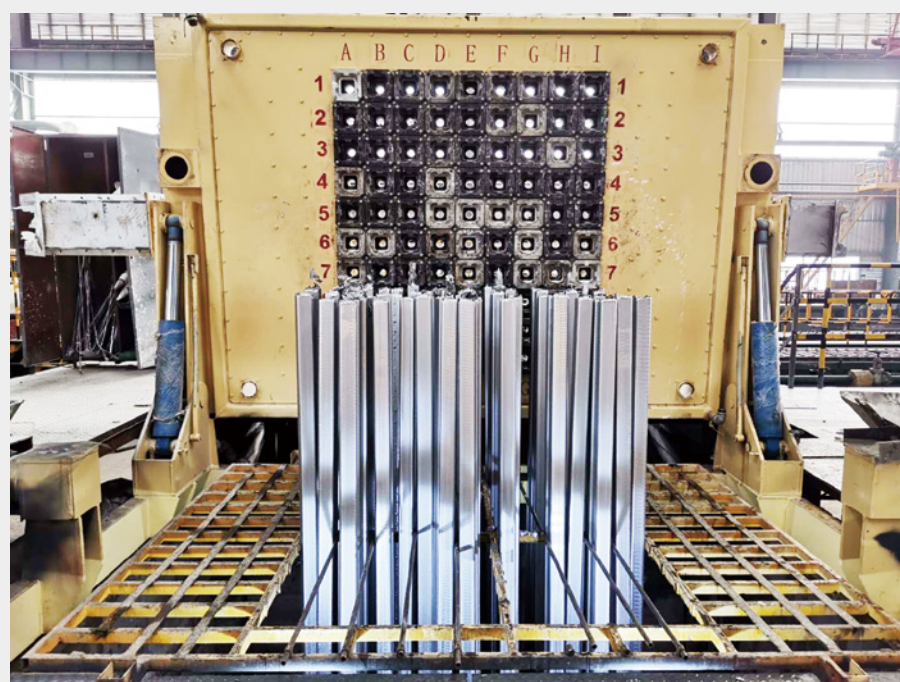


技术参数 Technical Parameters

圆形		Round	
直径	Φ63mm-Φ600mm	Diameter	Φ63mm-Φ600mm
棒长	6000~12500	Billet Length	6000~12500
每铸次根数	2~144(根据棒径决定)	Batch Quantity	2~144(According to the rod diameter)
方型		Slab	
宽	66~1300	Width	66~1300
厚	66~460	Thickness	66~460
棒长	6000~8000	Length	6000~8000
每铸次块数	2~4(根据棒大小决定)	Batch Quantity	2~4(It depends on the size of the bar)

铝棒铸造平台

ALUMINUM BILLET CASTING TABLE



铸造系统 CASTING SYSTEM

用途:

铸造铝及铝合金铸锭。

铸造方式:

- 同水平密排热顶铸造。
- 浮船铸遣(适用大扁锭铸造)。

结晶器种类:

- 铝质水帘式结晶器(适用10寸以下圆棒铸造, 结构简单,方便清洁维修)。
- 铝质水孔式结晶器(适用10寸以上圆棒铸造, 结构比较复杂, 冷却比较均匀, 提高大圆棒的表面质量)。
- 铜质结晶器(适用方棒和大扁锭铸造, 提高方棒的表面质量)。

Application:

Aluminum or aluminum alloy billet, slab casting.

Casting type:

- Same level hop top casting.
- Boat floating types casting (for big slab).

Casting type:

- Aluminum matrelall ler curtain type For below 10" billet casting, structure is simple and convenient to maintain.
- Aluminum material water pore type for above 10" billet casting, the structure is more complicated, cooling effect will be more uniform.
- Copper type (For slab and big ingot).

技术参数 Technical Parameters

圆形		Round Billet	
直径	Φ63mm-Φ600mm	Diameter	Φ63mm-Φ600mm
棒长	6000~12500	Billet Length	6000~12500
每铸次根数	2~144(根据棒径决定)	Batch Quantity	2~144(According to the rod diameter)
方型		Slab	
宽	66-1300	Width	66-1300
厚	66-460	Thickness	66-460
棒长	6000-8000	Length	6000-8000
每铸次根数	2-4 (根据棒大小决定)	Batch quantity	2-4 (It depends on the size of the bar)

熔铝炉控制柜 >>>
ALUMINUM MELTING FURNACE CONTROL CABINET



均质炉控制柜 >>>
HOMOGENEOUS FURNACE CONTROL CABINET



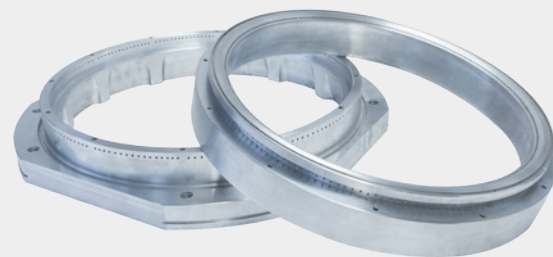
铸造机控制柜 >>>
CASTING MACHINE CONTROL CABINET



零配件 >>>
SPARE PARTS



结晶器
Crystallizer



大结晶器
Large Crystallizer



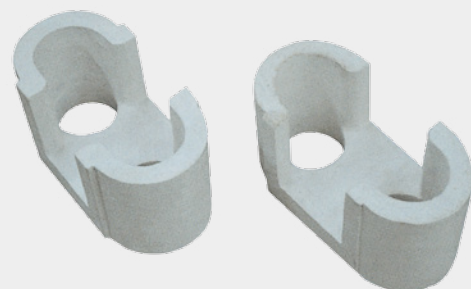
燃气烧嘴
Gas Burner



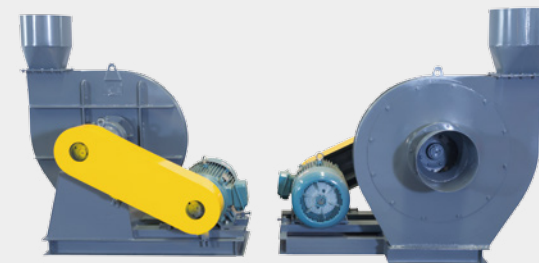
蓄热床
Heat Storage Bed



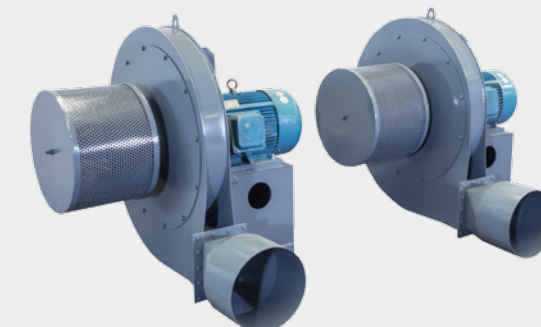
套管
Thinble



分流盘
Cross feeder



熔铝炉废气风机
Aluminum Melting Furnace Exhaust Fan



熔铝炉燃烧风机
Aluminum Melting Furnace Combustion Fan



电加热过滤箱
Electric Heating Filter Box



石墨环
Graphite ring



点火枪
Igniter



简易过滤箱
Simple Filter Box

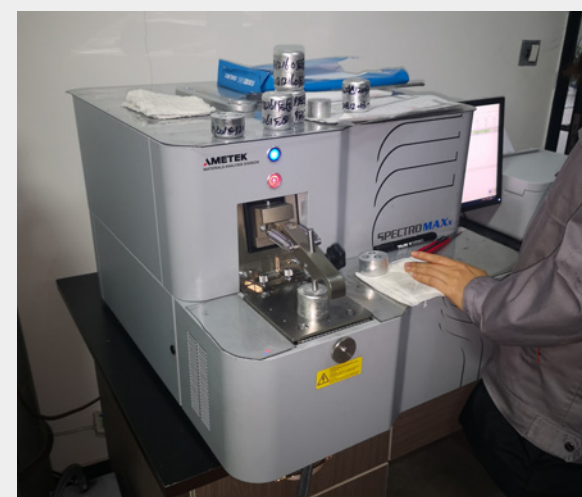
辅助设备 >>>
AUXILIARY EQUIPMENT



炒灰机 Drossing Machine



布袋除尘器 Bag Type Dust Collector



光谱仪 Spectrometer



在线除气 Online Degassing Machine



喂丝机 AITIB Feeder



简易精炼罐 Simple Type Powder Refining Tank



制氮机 Nitrogen Making Machine(99.999%)



电磁搅拌机 Electromagnetic Stirrer



手动锯棒机 Manual Billet Cutting Saw



电动喷粉精炼罐 Electrical Power Refining Tank



自动锯棒机 Automatic Billet Cutting Saw



半自动锯棒机 Semi-Billet Cutting Saw

工程案例

PROJECT CASE

部分国内案例 Part of Domestic Cases

- A 安徽恒坤铝业有限公司
- B 包头吉泰稀土铝材股份有限公司
- B 包头汇泽铝业有限公司
- C 成都阳光铝业有限公司
- C 重庆丰禾铝业有限公司
- C 重庆鼎润铝业有限公司
- C 重庆亘旭铝业有限公司
- C 重庆泉和铝业有限公司
- C 重庆顺博铝合金有限公司
- C 重庆恒亚实业有限公司
- C 重庆吉恩埃热能科技有限公司
- C 重庆赛姆特克机电设备有限公司
- C 常州华通焊业股份有限公司
- C 常熟市长发铝业有限公司
- C 沈阳丽格铝材有限公司
- D 鼎镁（昆山）新材料科技有限公司
- D 大冶市骏辉铝业有限公司
- D 大冶市正明铝业有限责任公司
- D 大冶市中鑫铝业有限公司
- D 大石桥市永顺铝业有限公司
- F 佛山市兴涛美铝业有限公司
- F 佛山市南海区大沥洪伟铝业有限公司
- F 佛山市齐力澳美贸易有限公司（佛山市嘉力亚贸易有限公司）
- F 福建奋安铝业有限公司
- F 福建省南平铝业股份有限公司
- F 福建省华银铝业有限公司
- F 福州麦特新高温材料有限公司
- G 广东金亿合金制品有限公司
- G 广东艺华不锈钢铝业有限公司
- G 广西平果铝合金精密铸件有限公司
- G 广西新宝铝铝业有限公司
- G 广安市华兴铝业有限公司
- G 广成铝业有限公司
- G 广亚铝业有限公司

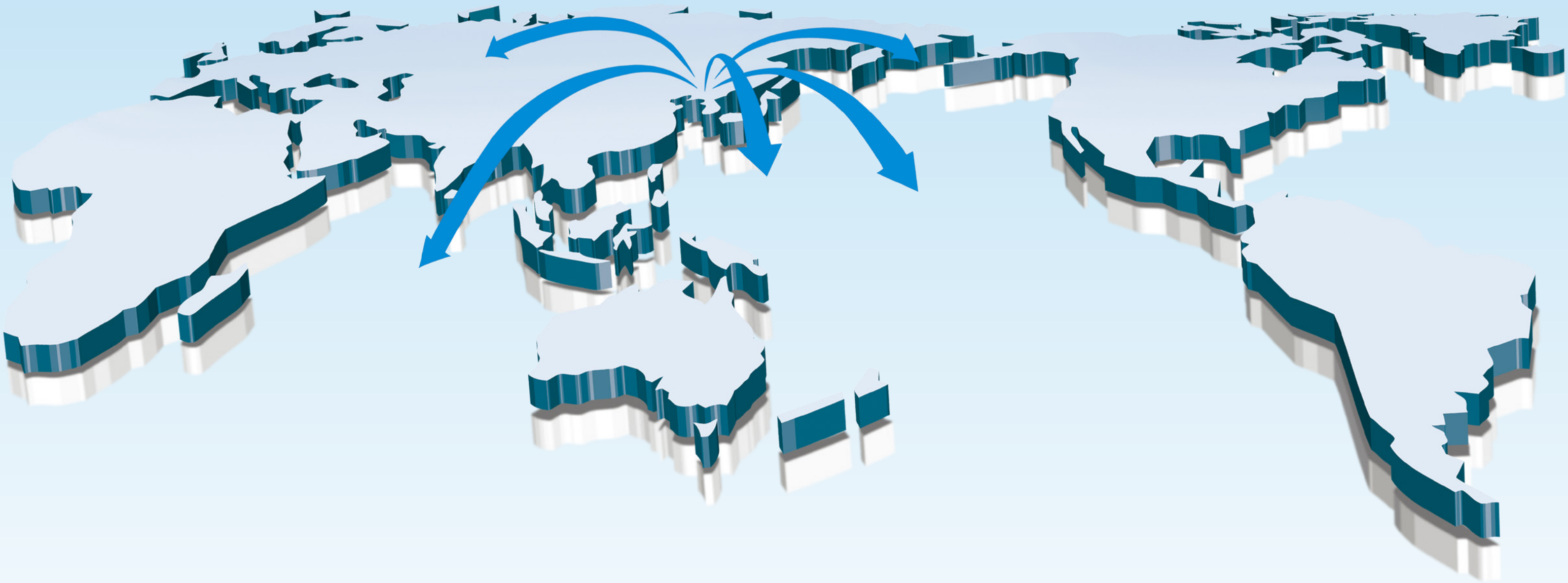
- G 甘肃宏达铝型材有限公司
- G 甘肃中瑞铝业有限公司
- G 贵州铝王铝业新材料科技有限公司
- H 湖北荆通科技有限公司
- H 湖北佳美铝业有限公司
- H 湖北卓群铝业有限公司
- H 湖北蓝华铝业有限公司
- H 湖北万佳宏铝业有限公司
- H 湖北创伟机械设备有限公司
- H 湖北美维铝型材有限责任公司
- H 湖北华博新材料科技股份有限公司
- H 湖北宏箭轻合金材料科技有限公司
- H 河阳恒阳铝业有限公司
- H 黄石市金桥铝业有限公司
- H 黄石市晨茂铝业有限公司
- H 霍林郭勒峰华铝业有限公司
- H 淮北富士特铝业有限公司
- J 江阴江顺国际贸易有限公司
- J 江苏江利进出口贸易有限公司
- J 江苏中机恒亚轻合金有限公司
- J 经卓新材料股份有限公司
- J 江西万工铝厂有限公司
- K 昆山捷安特公司轻合金科技有限公司
- L 兰州新海天铝业有限公
- L 辽源银源铝合金有限责任公司
- N 南京云海特种金属股份有限公司
- N 南平铝业（成都）有限公司
- N 南宁金贝利泰进出口贸易
- N 宁波科诺铝业有限公司
- N 宁夏瑞银工贸有限公司
- Q 潜江市正豪华盛铝电有限公司
- Q 青海庆丰铝业有限公司
- Q 清远美亚宝铝业有限公司
- Q 清远市钛美铝业有限公司

- Q 清远新粤亚铝业有限公司
- Q 清远市骏美金属材料有限公司
- S 山东瑞烨法兰有限公司
- S 山东伟盛铝业有限公司
- S 山东金通管业股份有限公司
- S 山东华宇合金材料有限公司
- S 四会国耀铝业有限公司
- S 四会华永兴铝业有限公司
- S 四川广汉三星铝业有限公司
- S 四川圣道铝业有限公司
- S 四川飞云铝业有限公司
- S 四川爱信铝业有限公司
- S 四川美裕铝业有限公司
- S 四川颜锋铝业有限责任公司
- S 上海恒辉铝业有限公司
- S 三明市三菲铝业有限公司
- T 太原重工股份有限公司
- T 铜陵诺普铝材料有限公司
- T 天津金鹏铝材制品有限公司
- T 天津银锚铝业股份公司
- W 武汉源泰铝业有限公司
- X 西南铝业（集团）有限责任公司
- X 新丰苏粤铜铝业有限公司
- X 陕西铭帝铝业有限公司
- Y 营口托田铝业有限公司
- Y 营口赛斯德型材有限公司
- Y 永臻科技（常州）有限公司
- Y 岳阳科达热能设备有限公司
- Y 宜兴县华泰铝业有限责任公司
- Z 中国能源工程有限公司
- Z 中铝南海合金有限公司
- Z 中航三林铝业有限公司
- Z 增城市广美铝材厂
- Z 肇庆亚洲铝厂有限公司
- Z 珠海鼎成进出口有限公司
- Z 扎鲁特旗光太铝业有限公司
- Z 邹平宏皓工业型材科技有限公司
- Z 漳州华隆铝制品有限公司
- Z 遵化市德嘉铝业有限公司

部分国外案例 Some Foreign Cases

- AKFA GROUP Uzbekistan (Benkam)
- AKFA GROUP Uzbekistan (Wide Tent)
- AK METAL SAN.TIC.A.S Turkey
- AK METAL SAN.TIC.A.S Turkey
- ANTIQUÉ EXTRUSION PVT. LTD. India
- ALUMINDO ALLOY ABADI Indonesia
- Abdul Noor Aluminium Extrusion Factory
- Alu pro for aluminum and mechanical industry company Egypt
- Century Metal Recycling Limited
- Domal SAL Syria
- DANIN ALUMINIUM LLC
- EL ALUMINIUM BILLET(M) SDN.BHD.Malaysia
- FORMOSA SHYEN HORNG METAL SDN.BHD.Malaysia
- G Das Industries Limited Ugandn
- GAID ALUMINIUM LTD Ukraine
- Global Vietnam Aluminium Co., Ltd.
- LLP Gold Aluminum Kazakhstan
- LLP Profile Metals LTD,Almaty,Kazakhstan
- KOREL A.S Turkey
- Mirage Aluminium SDN BHD Malaysia
- Press Metal Berhad Malaysia
- PARAGON INDUSTRIES LIMITED India
- RAHMATI Iran
- SKM Co., Ltd. Korea
- South Africa
- SARL FORZA METAL Algeria
- SUNHOUSE GROUP., JSC Vietnam
- OOO "PROK" Russia

(此排名顺序不分先后)
(In no particular order)



SALES RANGE

销售范围

专业/专注/诚信/创新

铝合金熔铸设备专业制造商
PROFESSIONAL MANUFACTURER OF ALUMINUM
ALLOY CASTING EQUIPMENT

TECHNOLOGICAL SUPERIORITY

OUR EQUIPMENTS

出口到以下国家

>> are exported to the following countries

- 哈萨克斯坦 Kazakhstan
- 阿尔及利亚 Algeria
- 埃及 Egypt
- 苏丹 Sudan
- 乌兹别克斯坦 Uzbekistan
- 印度 India
- 南非 South Africa
- 卡塔尔 Qatar
- 韩国 South Korea
- 印度尼西亚 Thailand
- 乌克兰 Ukraine
- 斯里兰卡 Sri Lanka
- 马来西亚 Malaysia
- 越南 Vietnam
- 伊朗 Iran
- 泰国 Thailand
- 土耳其 Turkey
- 俄罗斯 Russia
- 乌干达 Uganda
- 阿根廷 Argentina
- 墨西哥 Mexico
- 巴西 Brazil
- 孟加拉国 Brazil
- 土库曼斯坦 Turkmenistan