



全球战略合作伙伴
阿克苏诺贝尔
Global strategic partner — AkzoNobel

阿克苏诺贝尔粉末涂料事业部是世界最大的粉末涂料供应商，阿克苏诺贝尔公司与意大利蒙菲斯公司合作开发热转印专用粉末涂料。用该粉末配合蒙菲斯的耐候热转印膜生产出来的木纹产品，具有纹路清晰，耐候性好，渗透性好，高韧性，耐折弯等诸多优点。符合AMMA2603-2 (Qualicoat Class I) 和 AMMA2604-2 (Qualicoat Class II) 标准，由阿克苏诺贝尔公司和蒙菲斯公司联合出具 10 年和 15 年工程质保书。

Quality Assured

AkzoNobel powder coatings division is the world's largest powder coating supplier, mastering the world's top powder technology.

AkzoNobel and Memphis cooperated to develop a decorative solution with Interpon D STF powder and MENPHIS heat transfer film, they integrate together to reach the higher quality, meeting major international architectural standard Qualicoat and Qualideco.

AkzoNobel and Memphis will issue 10 years and 15 years warranty for film integrity and color integrity.

意大利蒙菲斯耐候木纹转印膜
阿克苏诺贝尔耐候性木纹专用粉



10 年涂膜完整性
10 年颜色稳定性
10 years film integrity
10 years color integrity
AMMA 2603-2
Qualicoat class I



15 年涂膜完整性
15 年颜色稳定性
15 years film integrity
15 years color integrity
AMMA 2604-2
Qualicoat class II

蒙菲斯质量体系

Memphis Quality System

蒙菲斯拥有一流的质量测试系统和环保控制体系，通过了国际质量体系 and 环保体系认证，其产品通过了 QUALIDECO、QUALICOAT、AAMA、AITAL、PCI 的国际标准认证，以及国内 CNAS、IFO 质量认证。蒙菲斯户外耐候木纹产品品质达到国际先进水平，符合国际环保要求，已成为行业标杆企业。

Memphis has a first-class quality testing system and environmental protection control system. It has passed quality control system and environmental protection control system. Its products have got the international quality approval :QUALIDECO, QUALICOAT, AITAL, AAMA and PCI, etc.



经典案例

Classic Cases

蒙菲斯木纹膜的纹理自然逼真，为千千万万个建筑注入了自然的气息，受到各建筑商的青睐，成就了无数个经典之作。2000 年，蒙菲斯来到中国，便受到建筑业的热切欢迎和广泛使用，蒙菲斯成为木纹转印品牌的首选——蒙菲斯木纹！

The texture of Memphis wood grain film is natural and realistic. It has injected a natural flavor into thousands of building and adds value to surface of buildings. It is favored by various builders and has achieved numerous classic works.

In 2000, Memphis came to China Market, it was widely sought after by the construction industry. Memphis became the first choice of wood grain transfer products——MENPHIS WOOD GRAIN.



迪拜 · 迪拜 · 轻轨
(Dubai · DuBai · Metro Station)



深圳 · 华润总部 · 春笋
(ShenZhen · China Resources · Tower)



香港 · 高银 · 何文田傲瓏
(HongKong · Goldin · HeWenTian Grand Homm)



三亚 · 保利 · 瑰丽酒店
(SanYa · Poly · Rosewood Hotel)



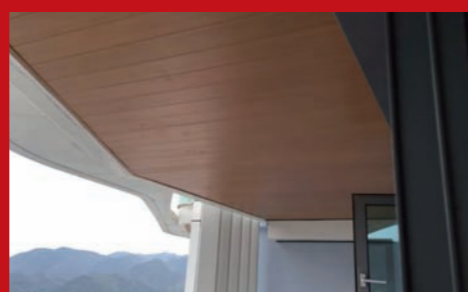
深圳 · 招商 · 双玺花园
(ShenZhen · Zhaoshang · Shuangxi)



成都 · 万华 · 麓湖生态城
(ChengDu · WanHua · Luxelakes Eco-City)



海南 · 恒大 · 海花岛
(HaiNan · Hengda · OceanFlower Island)



深圳 · 万科 · 壹海城
(ShenZhen · Wanke · One City)



广州 · 新世界 · 岭南新世界
(GuangZhou · NWD · Lingnan New World)



意大利蒙菲斯耐候木纹系统
MENPHIS WOOD FINISH PRODUCTS

营销中心：深圳市罗湖区嘉宾路国际商业大厦北座1501-1502室
Tel: 0755-8228 0729/8223 1729 Mob: +86-136 026 75880
Fax: 0755- 8225 6739 Web: www.memphis.com.cn



意大利蒙菲斯木纹

自然逼真 · 超久耐用

WOOD GRAIN · MENPHIS · ITALY
NATURAL · LIFELIKE · DURABLE



MENPHIS
蒙菲斯

全球顶级木纹热转印膜



意大利制造，源自1976 ·····

蒙菲斯 · MENPHIS

历史：蒙菲斯是一家具有前瞻性的公司。1976 年，Memphis S.p.A 蒙菲斯在意大利开始进入转印技术行业，是印刷和装饰行业里面，从事发展转印技术的先驱。在该技术领域的大多数方面，现在已经是行业的参考标准和可靠证明。

History: Memphis is a forward-looking company. In 1976, Memphis S.p.A. entered the transfer technology industry and has successfully developed and expanded its knowhow thanks to a strong innovative vision. In most aspects of this technology field, it is now the industry's reference standard and reliable certification.

产品：蒙菲斯公司是生产高级木纹热转印膜的欧洲最顶级企业。其木纹产品主要适用于经喷涂等处理后的金属表面的热转印（主要是铝合金表面）。在转印后的金属产品表面有非常逼真的木纹，大理石，铁锈，仿铜等表面效果。蒙菲斯木纹转印后的产品，经处理后，产品表面有极好的日晒、耐磨和耐腐蚀性。仿木纹铝合金型材与木材相比，具有日晒、防腐、防火、硬度高、重量轻、不变形、自然逼真，超久耐用等特点。木材的诱人外观与铝的强度相结合，导致了许多应用领域的发展，对世界各地的建筑业产生了巨大的影响。先进的技术、过硬的质量以及优异的产品性能，使该产品在市场大受欢迎，特别是在注重环保、节能的现代装饰市场上，已经是一种流行，一种趋势。

Products: Memphis is one of the top European companies in the production of advanced wood grain heat transfer film. Its wood grain products are mainly suitable for heat transfer printing of metal surface after spraying treatment (mainly aluminum alloy surface). After transfer printing, the surface of metal products has very realistic wood grain, marble, rust, imitation copper and other surface effects. After being treated, the surface of the products has excellent weather resistant, anti-friction, corrosion resistance. Compared with wood, imitation wood grain aluminum alloy profile has the characteristics of weather resistant, anti-friction, corrosion resistance, fire resistance, high hardness, light weight, no deformation, natural lifelike and super-durability. The attractive look of wood combined with the strength of aluminum has led to the development of many fields of application with a huge impact on building industry worldwide. Advanced technology, excellent quality and excellent product performance make this product very popular in the market, especially in the modern decoration market which pays attention to environmental protection and energy saving, it has become a popular trend.

定位：蒙菲斯公司现在是欧洲最大的转印膜生产企业，定位在高端木纹转印膜的研发和生产。立足在意大利 30000 平方米的生产研发基地，产品远销 80 多个国家，出口年销量 2500 万美元。

创新的产品和丰富的经验以及蒙菲斯获得成功，所有的这些结合在一起，加强了蒙菲斯在这个行业的参考地位（行内以它的质量为标准）和它成为世界级的领导者——蒙菲斯品牌！2000 年，蒙菲斯来到中国，便受到建筑业的热切欢迎和广泛使用，蒙菲斯成为木纹转印品牌的首选——蒙菲斯木纹！

Positioning: Investments have constantly been made in new manufacturing plants and areas: as a result, Memphis is now the biggest european producer of sublimation film for aluminum, with a production area of 30,000 square meters – entirely located in Italy – and exports to over 80 countries worldwide, for a turnover exceeding 25 million USD per year.

Innovative products and rich experience, as well as the success achieved by Memphis, all of which together strengthen the reference position of Memphis in the industry (the industry takes its quality as the standard) and it becomes a world-class leader——MENPHIS. In 2000, Memphis came to China Market, it was widely sought after by the construction industry. Memphis became the first choice of wood grain transfer products——MENPHIS WOOD GRAIN.





直纹橡木 Straight Oak ALU1805
洋松木 Pinus Koraiensis ALU1865
橡木 Oak ALU1801
橡木 Oak ALU1803



竹纹 Bamboo Pattern ALU1808
樱桃木 Cherry ALU1814
直纹橡木 Straight Oak ALU1811
直纹橡木 Straight Oak ALU1866



松木 Pine ALU1870
松木 Pine ALU1871
3D 松木 3D Pine ALU1872
樱桃木 Cherry ALU1815



橡木 Oak ALU1867
洋松木 Pinus Koraiensis ALU1868
直纹橡木 Straight Oak ALU1869
樱桃木 Cherry ALU1816



胡桃木 Walnut ALU1873
胡桃木 Walnut ALU1874
胡桃木 Walnut ALU1819
胡桃木 Walnut ALU1820



柚木 Teak ALU1875
鸡翅木 Cassia Siamea ALU1840
金橡木 Golden Oak ALU1822
樱桃木 Cherry ALU1876



樱桃木 Cherry ALU1826
3D 松木 3D Pine ALU1877
酸枝木 Acidwood ALU1827
红胡桃木 Red Walnut ALU1878



柚木 Teak ALU1829
柚木 Teak ALU1831
古木 Ancient Wood ALU1879
古橡木 Old Oak ALU1832



直纹橡木 Straight Oak ALU1833
白橡木 White Oak ALU1880
白橡木 White Oak ALU1881
3D 松木 3D Pine ALU1882



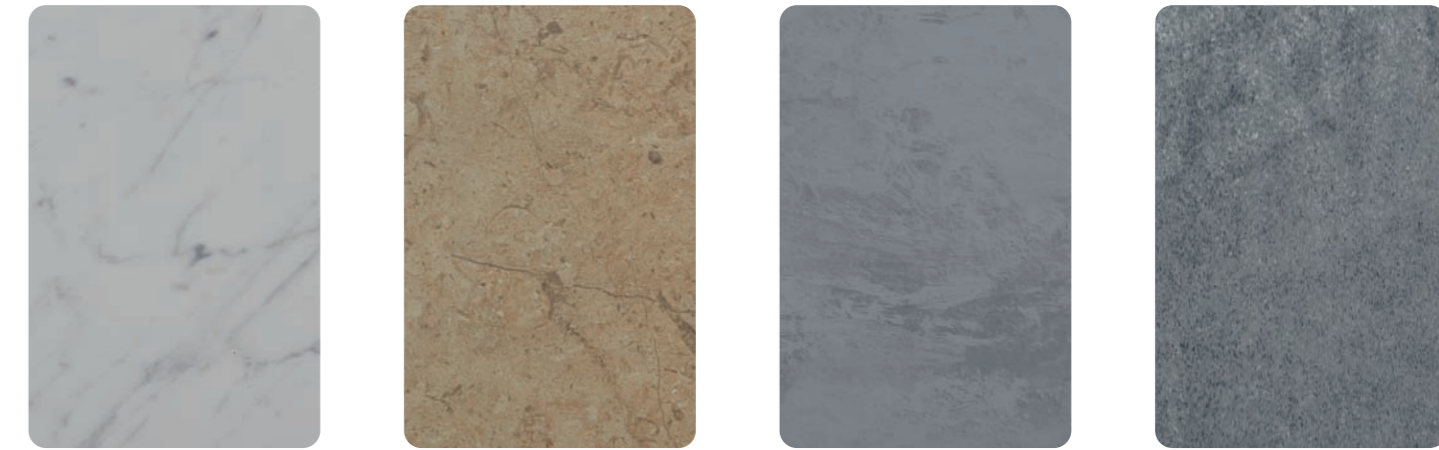
橡木 Oak ALU1883
橡木 Oak ALU1884
橡木 Oak ALU1885
橡木 Oak ALU1839



3D 松木 3D Pine ALU1886
橡木 Oak ALU1887
直纹橡木 Straight Oak ALU1841
直纹橡木 Straight Oak ALU1836



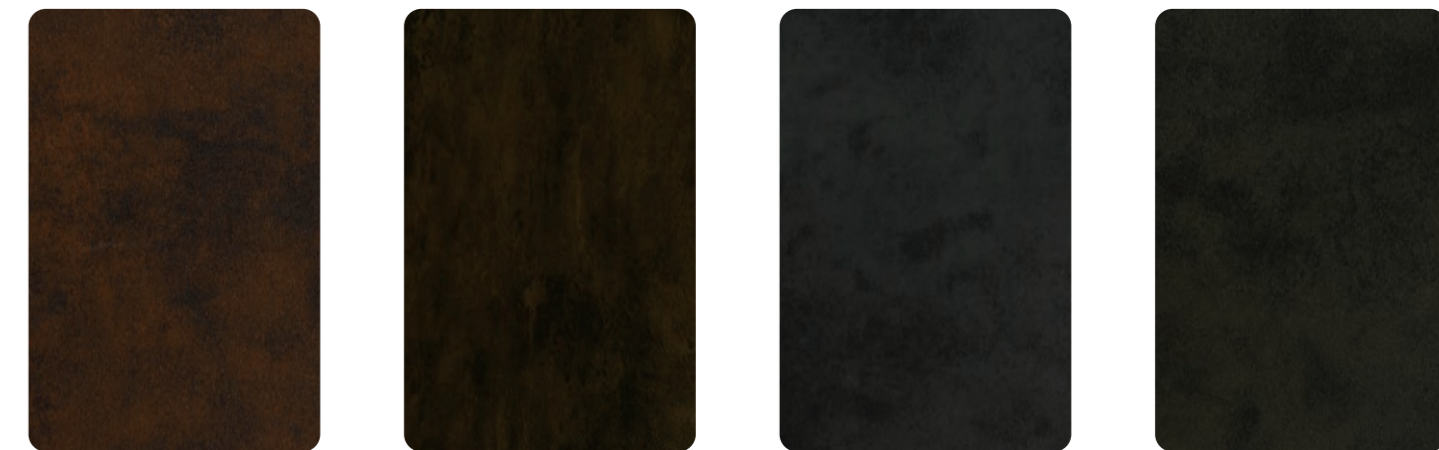
直纹橡木 Straight Oak ALU1842
橡木 Oak ALU1843
灰橡木 Grey Oak ALU1845
古橡木 Old Oak ALU1846



爵士白 Jazz White ALU1849
欧洲米黄 Perlatto Europa ALU1888
灰铁锈 Grey Rust ALU1850
浅水泥灰 Light Cement Ash ALU1851



铁锈 Rust ALU1889
铁锈 Rust ALU1855
水泥灰 Cement Ash Rust ALU1890
水泥灰 Cement Ash ALU1852



铁锈 Rust ALU1861
铁锈 Rust ALU1891
铁锈 Rust ALU1863
铁锈 Rust ALU1864



黄铜拉丝 Brass Drawing ALU1892
古铜拉丝 Copper Drawing ALU1893
红铜拉丝 Red copper Drawing ALU1894
红铜拉丝 Red copper drawing ALU1895