

28622626-7570 0757-81162998

世界一流的品质，中国制造的价格，客户满意的服务！
Word first-class quality, low manufacturing cost and customer-satisfying service!

领军铝材行业设备 LEAD INDUSTRY



佛山市南海元宸机械设备有限公司
Foshan Nanhai YuanChen Machinery Equipment Co.,Ltd.

地址：广东省佛山市南海区狮山镇长虹岭工业园（二期）有色金属加工区民虹路6号
ADD: Changhong Hill Industrial Park (two issue), No. 6, min Hong Road, nonferrous metal processing zone, Shishan town, Nahai District, Foshan City, Guangdong Province.
手机(Mobile): 13928637457 电话(Tel): 0757-81162998 传真(Fax): 0757-81162968
E-mail: QiufuZhang2009@126.com <http://www.fsyuanchen.com>



元宸机械
YUAN CHEN MACHINERY
领军铝材行业设备



吊车设备

Crane unit

企业简介 COMPANY INTRODUCE

佛山市元宸机械设备有限公司是集研发、设计、生产、安装、服务为一体的高新技术铝材设备的专业公司，凭借在设备自动化领域的专业水平和成熟的技术，在铝材设备行业迅速崛起，成为行业的领导者！

公司在发展的过程中，不断与国内外多个科研机构交流合作，先后引进了意大利挤压机全自动化后部设备、长棒加热炉和热剪机组、带飞锯双牵引机、韩国自动化电泳生产线、韩国自动化立体铝型材仓库等国际先进技术，并在多家大型铝型材加工企业广泛使用。二十多年来的铝型材生产经验和技术的不断改进，完善创新，令我们的设备质量在行业中首屈一指、实用精美。

依靠科技求发展，不断为用户提供满意的高科技产品，是我们始终不变的追求。在充分引进吸收国外先进技术的基础上，公司可为铝型材加工企业提：立式、横式自动化氧化电泳生产线，带飞锯双牵引机，长棒加热炉和热剪机组，全自动挤压冷床设备，全自动化铝型材、模具立体仓库，高档热转印铝材木纹设备等一系列产品。

随着经济的不断发展，各企业人力成本在迅速地提高，自动化设备能减少用人成本；如果您需要减少用工、降低成本，稳定质量、减少出错率，元宸公司能为您提供自动化程度高的挤压、氧化电泳、木纹转印、立体自动成品（模具）仓库等先进的生产线。

我们向您承诺：世界一流的品质，中国制造的价，客户满意的服务！
元宸机械——开启铝材设备制造新时代！

YuanChen Machinery (Foshan) Ltd. is a high tech company that integrates with research, development, design, manufacturing, service and sales. Relying on its professional level and mature technology in equipment automation field, the company develops rapidly and has become a leader in aluminum equipment industry.

The company has been in cooperation and communication with many scientific research institutions at home and abroad in the process of development. The company has introduced international advanced technologies such as full automatic posterior equipments for Italian extrusion presses, long bar heating furnace and hot shears, double hauling machine with flying saws, Korean automatic electrophoresis production lines, Korean automatic aluminum warehouse, which are used in large aluminum section processing enterprises. Ten years of experience in manufacturing aluminum sections and continuously improving technology and perfecting innovation keeps our equipments a leading quality in the industry.

Developing by technology and providing customers with satisfying high-tech products are our persistent pursuit. On the basis of absorption of international advanced technologies, the company can provide the Vertical, horizontal automatic oxidation electrophoresis production lines, aluminum section processing enterprises with double hauling machine with flying saws, long bar heating furnace and hot shears, full automation extrusion cooling bed equipments automatic solid warehouse for automatic aluminum materials and moulds, top grade hot transfer printing aluminum wood grain equipments etc.

Along with the continuous development of economy, the cost of labor force has been increased. Automatic equipments can cut the cost. If you need to cut the labor force, lower the cost, stabilize the quality and decrease error rates, Yuan Chen Company can provide you with high automation advanced production lines such as extrusion, oxidation electrophoresis, Advanced production lines such as wood grain transfer printing and solid automatic warehouse for finished products (moulds).

We offer you commitment; Word first-class quality, low manufacturing cost and customer-satisfying service!
YuanChen Machinery-----create a new age for aluminum equipment manufacturing!

元宸感谢您多年来信赖与支持 | 部分金牌客户(排名不分先后)

- | | | | |
|------------------|----------------|----------------|--------------|
| ● 广东新河铝业有限公司 | ● 美图(福建)铝业有限公司 | ● 山东凯米特铝业有限公司 | ● 辽宁托田铝业有限公司 |
| ● 广东豪美铝业有限公司 | ● 辽宁忠大铝业有限公司 | ● 广东兴发铝业股份有限公司 | ● 湖北宏泰铝业有限公司 |
| ● 越南东亚铝业有限公司 | ● 亚洲铝业有限公司 | ● 日本yKK铝业有限公司 | ● 广东华昌铝业有限公司 |
| ● 江苏罗普斯金铝业股份有限公司 | ● 中信渤海铝业控股有限公司 | ● 广东银一百铝业有限公司 | ● 河南恒阳铝业有限公司 |
| ● 辽宁精致铝业有限公司 | ● 海螺建材(泰国)有限公司 | ● 江西瑞旭实业有限公司 | ● 福建奋安铝业有限公司 |

氧化电泳生产线系统

OXIDIZATION ELECTROPHORESIS PRODUCTION LINE SYSTEM

- 立式、三排横式(7m, 14m)手动或自动化氧化电泳生产线。
Vertical, horizontal (7m, 14m) manual or automatic oxidation electrophoresis manufacturing line.
- 生产效率高，色差报废少，各种消耗低，运行稳定可靠。
High production efficiency, few chromatic rejection, low consumption and stable operation.
- 一站式服务：制造安装，调试、培训、传授十几年的大规模电泳生产经验。
One-station service: manufacturing, installation, debugging, training and teaching tens of years production experience in large scale electrophoresis.

领先的高效率
LEADING HIGH EFFICIENCY

上料设备 Feeding equipment

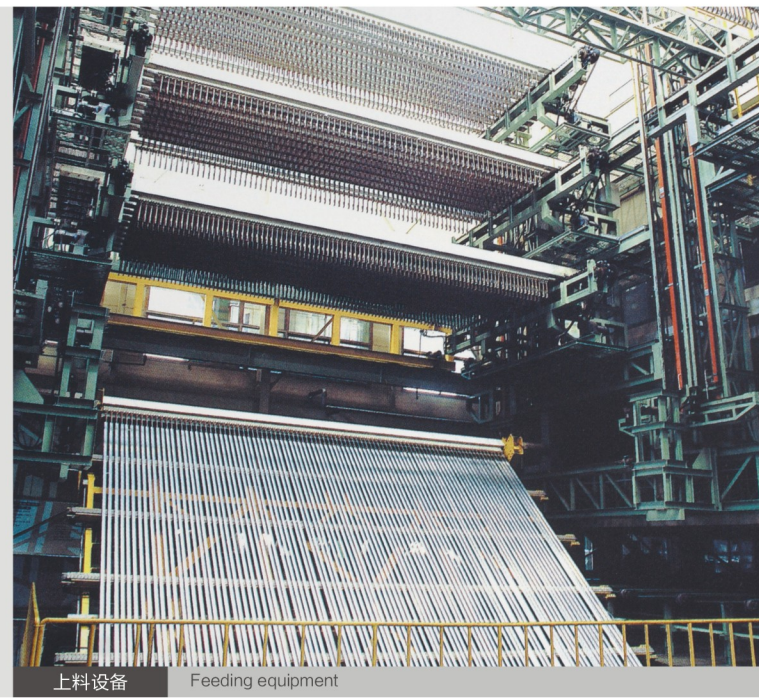
为了使加载铝材的导电梁连续地进行表面处理，上料设备可实现高效率的自动上料或人工绑料，导电梁均可自动传递。

The material charging equipments can charge materials automatically or manually to keep the conductance beam loaded with aluminum materials making surface treatment. The beams will convey materials automatically.

下料设备 Blanking equipment

为了下料的简便工作和快捷，可实现夹具自动张开和传递产品，空梁自动传递到下工位。

For the convenience of laying the materials, the clamps can automatically open and convey materials to the next work station.



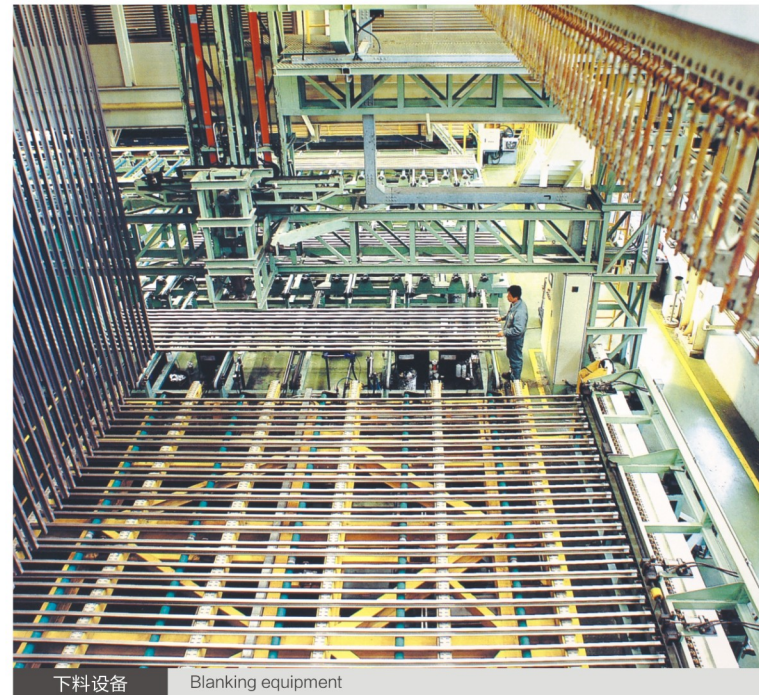
上料设备 Feeding equipment



氧化电泳全自动线 Automatic oxidation electrophoresis line



固化炉 Solidifying furnace



下料设备 Blanking equipment



立式线固化炉 Vertical line curing furnace



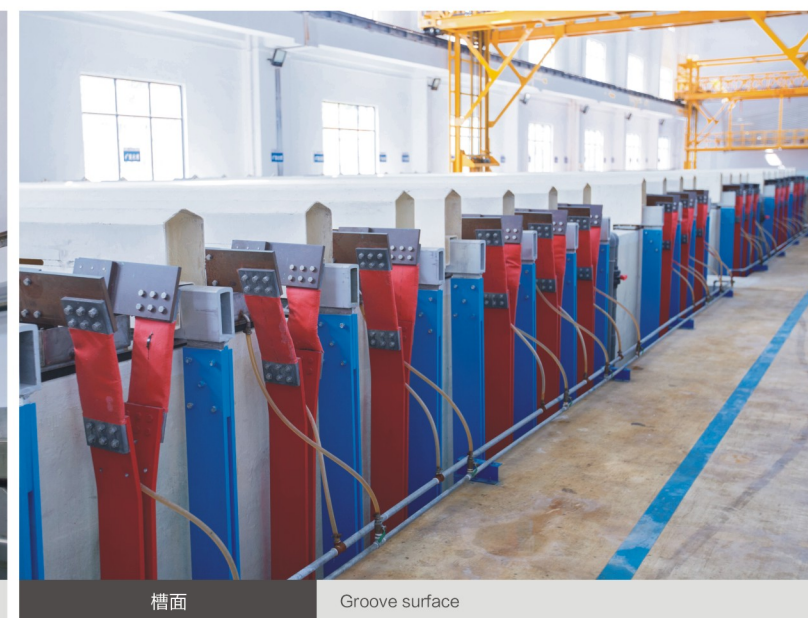
快捷式上下料 Quick loading and unloading



复合式上料 Composite material



三排氧化电泳手动生产线 Three-row manual oxidation electrophoresis production line



槽面 Groove surface

领先的自动化
LEADING AUTOMATION

自动氧化起重机 Auto oxidation crane

起重机根据工艺设置和程序由中央控制室自动处理一切。根据需要可进行自动、半自动、手动运转。

The cranes are controlled by technological configurations and programs to be operated automatically, semi-automatically and manually as per needed.



智能中央控制 Intelligent central control

领先的管理性 LEADING MANAGEMENT

自动控制系统及整流器 Automatic control system and rectifier

实现上料, 起重机、轨道车、固化炉、下料等设备的自动运转控制, 根据上料时的数据进行工艺槽处理流程与整流器间的自动联系运转, 并且可利用此数据和工厂ERP体系联网管理。

Automatic operation control of material charging, cranes, and rail vehicles, curing ovens and laying materials is achieved. The procedure of technological grooves and automatic linking and operation between rectifiers are done according to the data of charging materials, which can be connected into ERP network to manage.



整流电源设备 Power rectifier



8.5米生产线

8.5 m production line



电泳精制净化装置 Electrophoresis purification device



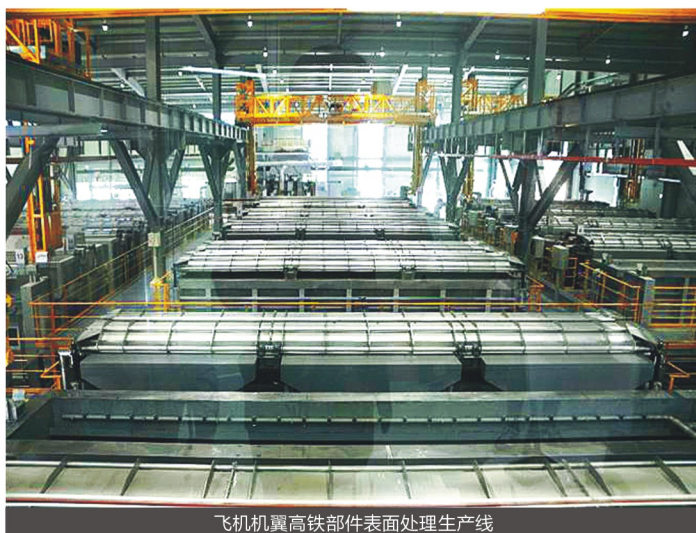
电泳涂料回收(R.O)装置 Electrophoresis Spray material recycling (R.O.) device



硫酸回收装置 Sulphuric acid recycling device



设备室1 Equipment Room 1



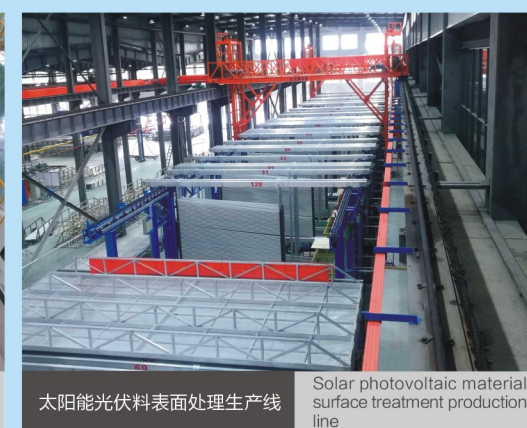
飞机机翼高铁部件表面处理生产线
Surface treatment production line for high-speed wing parts of aircraft wings



车间排气 Workshop exhaust



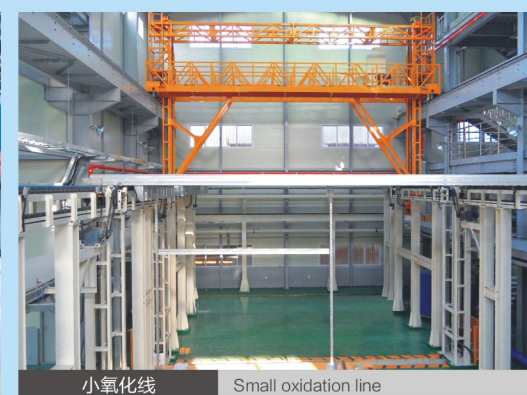
立式氧化线上下料 Blanking on vertical oxidation line



太阳能光伏料表面处理生产线
Solar photovoltaic material surface treatment production line



设备室2 Equipment Room 2



小氧化线 Small oxidation line



小部件局部氧化线 Local oxidation line for small parts

立体全自动仓库系统 3D full automatic warehouse system

从省力化到库存管理、高效精细服务客户

Provide customers with efficient and considerate service from labor-saving to warehouse management

是否能拥有多品种少量生产、迅速准确发货等现代化、高效率的物流系统，可以说对企业的优劣影响甚大。在当今这个时代，作为物流系统的重点的仓库管理，如果还是停留于原有手工堆放、帐册记录、人工搬运等旧做法的话，就会落后于时代。当今社会是追求省力化、到库存管理、生产管理、客户服务的整体仓库管理。

元宸机械设备公司拥有丰富的技术知识和制作经验，可建造包含信息管理在内的立体全自动仓库系统！

Varieties, rapid delivery, high efficient logistic system will greatly influence a company. In this age, if the warehouse management, as an important part of logistic system stays at the manual piling, book record level, it will fall behind. The pursuit today is whole integrated warehouse with saved labor force, inventory management and customer service.

Yuan Chen Machinery has abundant technical knowledge and experience in manufacturing that it can establish 3D full automatic warehouse system including information management.

优点 SUPERIORITIES

- 入库方便，出库自动快捷。
Convenient and quick warehouse entry and exit.
- 降低成本、节约人力。
Lower the cost and save labor force.
- 信息管理的一元化，更加迅速、正确地进行信息处理，可与ERP系统连接。
Unification of information management to deal with information more rapidly and precisely, connected to ERP.
- 可用于少量、多品种的铝型材的生产、销售。
Used for the manufacturing and sales of aluminum sections of few amount and several varieties.
- 改善操作环境。
Improve the operation environment.
- 提高仓库管理的人性化。
Elevate the humanization of inventory management.
- 有效地利用空间，每平方米可贮存一吨铝型材。
Effective utilization of space that one ton of aluminum section can be stored in every square meter.
- 能进行恰当的库存管理，数据准确。
Appropriate inventory management with precise data.
- 自动化实现，大大提高了设备的安全性、可靠性。
Automatic, greatly elevate the safety and reliability of the equipments.
- 不会使产品有划伤、擦伤、碰伤。
No scratching, rubbing or bumping to the products.



自动化前处理线

Treatment line before automation



喷漆生产线 Painting production line



热转印木纹生产线 Heat transfer processing wood grain production line



喷涂生产线 Coating line

喷涂、木纹设备 SPRAYING, WOOD GRAIN EQUIPMENTS 优点 Superiorities

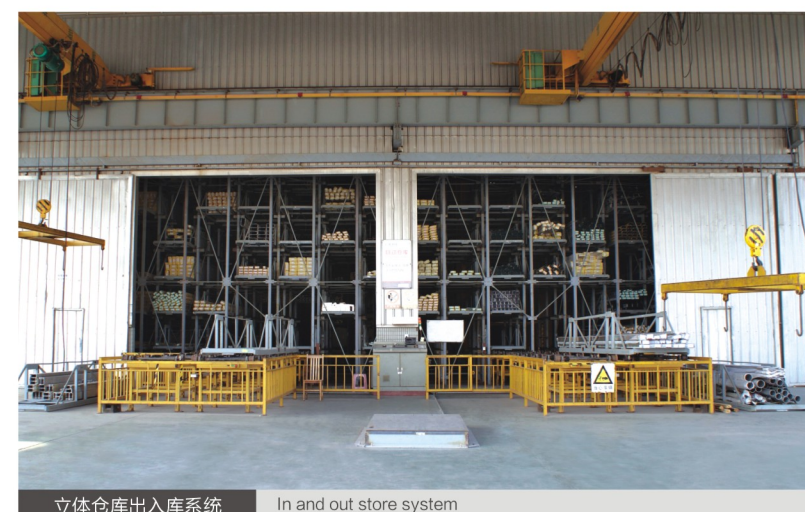
- 铝型材木纹装饰花色多，色泽纹理逼真。
Various patterns of wood grains with vivid texture and colors for the aluminum sections.
- 操作简单方便，生产效率高。
Easy operation, high production efficiency.
- 适用于各种型材断面，凹槽中均能转印。
Suitable for various sections, transfer printing is available for the grooves.
- 特殊的生产工艺，无需价格昂贵的转印膜，生产成本很低。
Special manufacturing technology, no expensive transfer printing film needed, low manufacturing cost.



立体全自动铝型材仓库 Automatic aluminum material warehouse



立体全自动铝型材仓库 Automatic aluminum material warehouse



立体仓库出入库系统 In and out store system



立体仓库出入库系统 In and out store system

立体仓库出入库系统 In and out store system



双牵引机挤压配套设备 Auxiliary equipments of double traction extrusion

双牵引机挤压配套设备 Auxiliary extruding equipments for double hauling machine

- 在现代化挤压厂里，人们关心的焦点是各种不同设备的连接与整合。经过精密协调的挤压机配套设备，对提高产品质量和运行过程经济性具有决定性作用。
In modern extrusion factories, what people focus on are the connections and integrations between equipments. The precisely collaborated matching equipments play a decisive role in the elevation of product quality and the economy.
- 元辰机械设备有限公司的挤压配套设备可以担此重任。它们能保证产品达到极高的质量，降低废品率，自动化程度高，同时运行极为安全，操作人员极少。
The extrusion matching equipments of Yuan Chen Machinery can take the responsibility. The products can ensure the quality, reduction of rejection rates and high automation. And meanwhile, it is safe to operate and needs few operators.
- 带飞锯的双牵引机以最佳的液压和机械部件为基础，可靠实用的控制系统为核心，保证了我们提供设备具有高品质、高水平生产能力，低维修要求。
On the basis of the best hydraulic and mechanical components, the double hauling machine with flying saws adopts practical control system as the core to ensure the top quality, high level capacity and low maintenance requirements of our products.

带飞锯的双牵引的优势在于 The advantages of double hauling with saws are

- 帮助挤压成型，减少修模次数，特别适用于一模多孔挤压。
It helps the molding of the extrusion and reduces times of the modification, especially suitable for extrusion of multi-aperture with one mold.
- 挤压机不必等待牵引机返回来就可进行下一个挤压周期，因而大大提高了生产效率。
The extrusion press can go to the next extrusion period without the return of the hauling machine that it greatly elevates the manufacturing efficiency.
- 飞锯系统正好沿着铝棒接头的焊合线进行锯切，使废品数量降到最低，大大提高成品率。
The flying saw system goes along with the soldering line of the aluminum bar that it minimizes the numbers of rejects and greatly elevates the rate of finished products.
- 两个牵引头可平稳、恒力进行交接，可有效地避免型材形成震动痕。
The two hauling head can connect stably and permanently, effectively avoiding the formation of trembling traces on the sections.
- 后牵引头高速回程可满足任何高速挤压的要求。
The high speed backhaul can satisfy any high speed extrusion.



带飞锯双牵引机组 Double traction machine unit with saws

自动挤压配套设备优点 Advantages of auxiliary automatic extruding equipments

- 根据生产条件和相应的产品要求有针对性地、有控制地进行型材风水冷却，在线淬火。
It can control the cooling of the aluminum sections according to specific manufacturing conditions, Online hardening.
- 符合产品高度要求的挤出辊道，冷却后作为高温传送带的横向传送机；可自动运行的拉伸带、装料带和取料传送带。
The extrusion rollers that meet the high requirements of products will be used as transverse conveying machine after cooling; it can automatically run, used as drawing belt, feeding and unloading belts.
- 装有视频监控的自动拉伸矫直系统，可根据需要的型材长度进行自动调节，实现全自动操作。薄板夹头可减少型材末端的变形。
The automatic stretch rolling system with camera can automatically adjust the length of the sections. The sheet tightening head can reduce the deformation of the section ends.



模具炉 Die furnace



时效炉 Aging Furnace

- 装有型材长度挡块的横切台采用数字锯切长度预选和型材末端定向装置，安全传送锯切好的型材。
The transverse cutting table with block of section length adopts digital cutting length preset and section end location device to safely convey the well cut sections.
- 可提升和下降的横向传送机用于型材的人工卸料，或者用于将锯好的型材运送到堆垛机旁。
The transverse conveying machine can be used for manual unloading or conveying the sawed sections to the piling machine.

长棒加热炉、热剪机、模具炉及时效炉的特点 Features of rod heating furnace, hot shearing machine, Die furnace and Aging Furnace

- 铝棒存储台带有自动翻棒系统。
The aluminum bar storage deck is equipped with automatic turnover system.
- 铝棒推进机用液压马达及减速机作驱动带动传动链条将铝棒送到加热炉和热剪机中。
The aluminum bar propulsion machine is driven by hydraulic motor and decelerator to drive the chains to send aluminum bars into the heating furnace and hot shearing machines.
- 铝棒加热炉利用燃气分区加热，多点测温，可实现梯度加热，承载轨道采用耐热不锈钢铸造。
The aluminum bar heating furnace uses gas to heat in regions to achieve gradient heating. The track is made of heat resistant stainless steel.
- 热剪机设置了单切循环，无废料双切循环，前、后废料双切循环，单根铝棒循环进行自动剪切，机械部份是由液压缸带动剪刀进行水平式前切，并带有自动送棒系统，将铝棒自动送入挤压机中。
The hot shearing machine is set up with single-cutting circulation and non-waste double-cutting circulation. A single bar will be fed in for automatic cutting in circulation. The mechanical parts are driven by hydraulic cylinder for vertically forward cutting with automatic bar feeding system to send aluminum bars into the extruding machines.
- 编码器精度控制棒长，触摸屏显示和设置，自动化操作，生产效率高，方便维修，大大减轻工人劳动强度。
The encoder precisely controls the length of the bar. The touch screen display and setup, automatic operation, high efficiency and convenience of maintenance greatly reduce the labor intensity.



双牵引挤压配套设备 Auxiliary equipments of double traction extrusion



双牵引挤压配套设备 Auxiliary equipments of double traction extrusion



自动拉伸矫直机 Automatic stretching machine



在线淬火、风水冷却设备 Online quenching, air cooling equipment



长棒加热炉及热剪机 Long rod heating furnace and heat shearing machine



长棒加热炉及热剪机 Long rod heating furnace and heat shearing machine