

温馨提示
因印刷关系，产品颜色可能与实物略有偏差，请以实物为准，图片仅供参考；
生产出厂的产品尺寸误差为 ± 3mm；
图片与实物之间存在轻微色差属于正常；
不同批次的产品厚度有 ± 0.1mm 偏差属于正常；
本公司保留更改产品设计、规格参数的权利，请以实物为准，将不另行通知；
本公司对本图册资料保留最终解释权。

季华铝业
Ji Hua Aluminium Co., Ltd.
0757-6206503

高品质铝材生产服务商
HIGH QUALITY ALUMINIUM PRODUCTION SERVICES



专注、专心、专业 - 悠久见证
FOCUS ON. CONCENTRATE. PROFESSIONAL - LONG WITNESS



国际官网



国内官网

广东季华铝业有限公司
GUANGDONG JIHUA ALUMINIUM CO.,LTD
地址：广东省佛山市狮山镇兴业路
add: Xingye road, Shishan Town, Foshan City, Guangdong Province
网址：www.jihua-alu.com 客服热线：400-6896-168

C 公司简介

COMPANY PROFILE

广东季华铝业有限公司，位于狮山兴业东路，始建于1991年，是全国著名的专业生产铝合金型材的大型企业。拥有国际先进水平的现代化铝材生产线23条和质量检测设备50台(套)，集熔铸、模具、挤压、机械磨砂、阳极氧化、电泳涂装、粉末喷涂、氟碳漆喷涂、热转印木纹(石纹)、隔热(穿胶、注胶)生产线、铝材深加工于一体。现有员工700多人，其中高、中级工程技术及管理人员100多名，具有先进完善的设计、生产、试验和检测手段以及完整的销售网络，产品畅销全国和境外20多个国家及港、澳、台地区。

季华牌铝型材强度高、耐磨、耐腐蚀，美观大方，规格配套，品种齐全，质量优良，产品采用国际标准并符合国家GB5237标准，多年来一直深受广大用户的好评。公司2001年率先引进意大利铝材、板材木纹热转印设备和技术，填补国内铝材木纹空白，堪称“木纹热转印之父”。2002年凭“粉末喷涂热转印金属装饰材料”项目获得“国家级火炬计划项目”证书；2003年获得“重点高新技术企业”证书，同年获得“广东省名牌产品”称号；2004年“季华牌”商标获得“广东省著名商标”称号；2009年获得“管理优秀奖”；2011年公司管理更上一层楼，并获得“标准化良好行为”AAA企业；2012年获得“有色金属产品实物质量金杯奖”；2015年荣获“中国铝材十大品牌”证书；2015年获得“中国科技创新节能环保行业十佳品牌”；2015年获得“国家专项抽查质量标杆企业”；2015年获得“连续二十四年广东省守合同重信用企业”。二十多年来，公司凭借着完善的质量管理体系和作业管理体系，凭着“坚毅、诚信、团结、执着”的季华人精神不断前进！

“管理为根，质量为本，创新为道，服务为路”是公司永恒的经营宗旨。公司凭着务实、认真的管理理念。公司一贯力求生产周期短，补料及时，急用户之所急，以优质的服务赢得广大用户的信赖。“重合同守信誉”的荣誉永远鞭策着季华人！生产出顾客最满意的铝材更是季华人执着的永恒追求，季华铝业将以更好的人才、更好的技术、更好的服务去满足客户需求，不断提升产品，创造客户价值，为实现季华理想而不懈努力！奋斗！

GUANGDONG JIHUA ALUMINIUM CO.,LTD. WHICH IS LOCATED IN EAST XINGYE ROAD, SHISHAN TOWN,NANHAI DISTRICT FOSHAN CITY,AND INITIALLY ESTABLISHED IN 1991. IS A LARGE NATIONWIDE FAMOUS ENTERPRISES THAT IS ENGAGED IN MANUFACTURING ALUMINIUM ALLOY PROFILES. THE COMPANY HAS MAINLY 23 MODERN ALUMINIUM PRODUCTION LINES AND 50 SETS OF QUALITY INSPECTION EQUIPMENT WITH INTERNATIONAL ADVANCED LEVEL THAT INTEGRATES WITH CASTING, MOLD, EXTRUSION, MECHANICAL SAND POLISHING, ANODIC OXIDATION, ELECTROPHORESIS COATING, POWDER SPRAYING, FLUOROCARBON PAINT SPRAYING, HOT TRANSFER PRINT WOOD GRAIN (STONE GRAIN), HEAT INSULATION (GLUE PENETRATION, AND FILLING) PRODUCTION LINES, AS WELL AS ALUMINIUM MATERIAL DEEP PROCESSING. AT PRESENT, THE COMPANY HAS MORE THAN 700 EMPLOYEES, INCLUDING OVER 100 SENIOR AND MIDDLE LEVEL ENGINEERING, TECHNICAL AND MANAGEMENT STAFF, AND ADVANCED AND PERFECT DESIGN, MANUFACTURING, TESTING AND INSPECTION METHODS AND COMPLETE SALES NETWORKS. THE PRODUCTS HAVE BEEN WELL SOLD ALL OVER THE COUNTRY AND MORE THAN 20 COUNTRIES IN THE WORLD AS WELL AS IN HONG KONG, MACAU AND TAIWAN REGION.

JIHUA ALUMINIUM PROFILE FEATURES HIGH STRENGTH, WEARING RESISTANCE AND CORROSION RESISTANCE, BEAUTIFUL IN SHAPES, MATCHING SPECIFICATION, COMPLETE VARIETIES AND FINE QUALITY. THE PRODUCTS HAVE BEEN MANUFACTURED ACCORDING TO INTERNATIONAL STANDARDS AND COMPLY WITH NATIONAL GB5237 STANDARDS, RECEIVING GOOD EVALUATIONS FROM USERS FOR YEARS. IN 2001, THE COMPANY WAS THE FIRST TO INTRODUCE ITALIAN ALUMINIUM AND PLATE WOOD GRAIN HOT TRANSFER PRINT EQUIPMENT AND TECHNOLOGIES, FILLING IN THE BLANK OF ALUMINIUM PROFILE WOOD GRAIN IN THE COUNTRY. THE COMPANY IS KNOWN AS "THE FATHER OF WOOD GRAIN HOT TRANSFER PRINT". IN 2002, THE COMPANY OBTAINED THE CERTIFICATE OF THE STATE TORCH PLAN PROJECT WITH THE PROJECT OF "POWDER SPRAY HOT TRANSFER PRINT METAL DECORATION MATERIALS. IN 2003, THE COMPANY OBTAINED THE CERTIFICATE OF KEY HIGH AND NEW TECHNOLOGY ENTERPRISE AND OBTAINED THE TITLE OF 'FAMOUS BRAND PRODUCT IN GUANGDONG PROVINCE' AT THE SAME YEAR. IN 2004, 'JIHUA' BRAND WAS GIVEN THE TITLE OF 'GUANGDONG FAMOUS BRAND'. IN 2012, THE COMPANY OBTAINED THE AWARD OF 'GOLD CUP OF PHYSICAL QUALITY OF NON-FERROUS METAL PRODUCTS'.FOR MORE THAN TWENTY YEARS, RELYING ON THE PERFECT QUALITY MANAGEMENT SYSTEM AND OPERATING MANAGEMENT SYSTEM AND THE SPIRIT OF 'COMITY ,HONESTY, CREATIVE, FORWARD-LOOKING AND PRAGMATIC', THE COMPANY AND THE EMPLOYEES KEEP ADVANCING!

"THE MANAGEMENT IS THE ROOT, QUALITY IS THE FOUNDATION, INNOVATION IS THE WAY AND SERVICE IS THE ROAD" IS THE ETERNAL OPERATION TENET OF THE COMPANY. RELYING ON THE PRACTICAL AND SINCERE MANAGEMENT PHILOSOPHY, THE COMPANY OBTAINED THE AWARD OF MANAGEMENT IN 2009; THE COMPANY MADE FURTHER PROGRESS IN 2011 AND OBTAINED THE TITLE OF 'AAA GOOD BEHAVIOR ENTERPRISE IN STANDARDIZATION'. THE COMPANY STRIVES FOR SHORT CYCLE, TIMELY SUPPLEMENTING AND WORRY FOR USERS, WINNING GREAT RELIANCE FROM USERS WITH EXCELLENT SERVICE. THE HONOR OF "FOCUSING ON CONTRACT AND REPUTATION" WILL ALWAYS URGE THE EMPLOYEES OF THE COMPANY! IT IS THEIR PERMANENT PURSUIT TO PRODUCE ALUMINIUM MATERIAL TO THE SATISFACTION OF CUSTOMERS, JIHUA ALUMINIUM WILL SATISFY THE DEMANDS OF ALUMINIUM WITH MORE TALENTS, BETTER TECHNOLOGIES AND BETTER SERVICE, KEEP IMPROVING PRODUCTS, CREATE VALUES FOR CUSTOMERS AND MAKE CONSISTENT EFFORTS FOR THE IDEALS OF JIHUA! FIGHT!

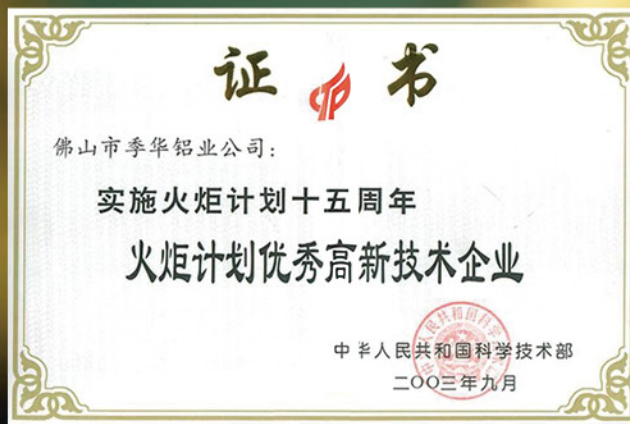


专注 建造舒适家居

BUILD A COMFORTABLE HOME

H 荣誉资质 HONORARY

D 发展历程 DEVELOPMENT



- 1991年：公司成立。
- 1998年：评为“中国名牌”产品。
- 2001年：引入意大利铝材木纹，板印木纹，填补国内空白。
- 2002年：获“国家级火炬计划项目”推动国内金属装饰材料喷涂热转印。
- 2003年：获得“重点高新技术企业”“广东省名牌产品”。
- 2004年：获得“广东省著名商标”。
- 2005年：评为全国有色金属标准化 SAC/TC243/SC1 会员单位。
- 2009年：获得“管理优秀奖”。
- 2011年：获得“标准化良好行为”AAA 企业。
- 2011年：获得“连续二十年广东省守合同重信用企业”。
- 2012年：获得“有色金属产品实物质量金杯奖”。
- 2014年：获得“佛山市承左诺诚信经营企业”。
- 2015年：获得“中国铝材十大品牌”、“中国科技创新节能环保行业十佳品牌”、“国家专项抽查质量标杆企业”。
- 2016年：获得“连续二十五年广东省守合同重信用企业”、“QUALICOAT 会员”证书。

In 1991, THE COMPANY WAS FOUNDED.

In 1998, A S"CHINA FAMOUS BRAND".

In 2001, THE COMPANY WAS THE FIRST TO INTRODUCE ITALIAN ALUMINIUM AND PLATE WOOD GRAIN HOT TRANSFER PRINT EQUIPMENT AND TECHNOLOGIES, FILLING IN THE BLANK OF ALUMINIUM PROFILE WOOD GRAIN IN THE COUNTRY.

In 2002, OBTAINED THE CERTIFICATE OF THE STATE TORCH PLAN PROJECT WITH THE PROJECT OF " POWDER SPRAY HOT TRANSFER PRINT METAL DECORATION MATERIALS " .

In 2003, O BTAINED THE CERTIFICATE OF KEY HIGH AND NEW TECHNOLOGY ENTERPRISE AND OBTAINED THE TITLE OF "FAMOUS BRAND PRODUCT IN GUANGDONG PROVINCE".

In 2004, O BTAINED"GUANGDONG FAMOUS BRAND".

In 2005, A S NATIONAL NONFERROUS METAL STANDARD SAC/TC243/SC1 MEMBER UNIT.

In 2009, O BTAINED"MANAGEMENT EXCELLENCE AWARD".

In 2009, O BTAINED"MANAGEMENT EXCELLENCE AWARD".

In 2011, O BTAINED"AAA GOOD-CONDUCT ON STANDARDIZATION".

In 2011, O BTAINED" SHOU CONTRACT RE-CREDIT " ENTERPRISE BY GUANGDONG FOR 20 YEARS.

In 2012, O BTAINED"NONFERROUS METAL PRODUCTS QUALITY GOLD AWARD".

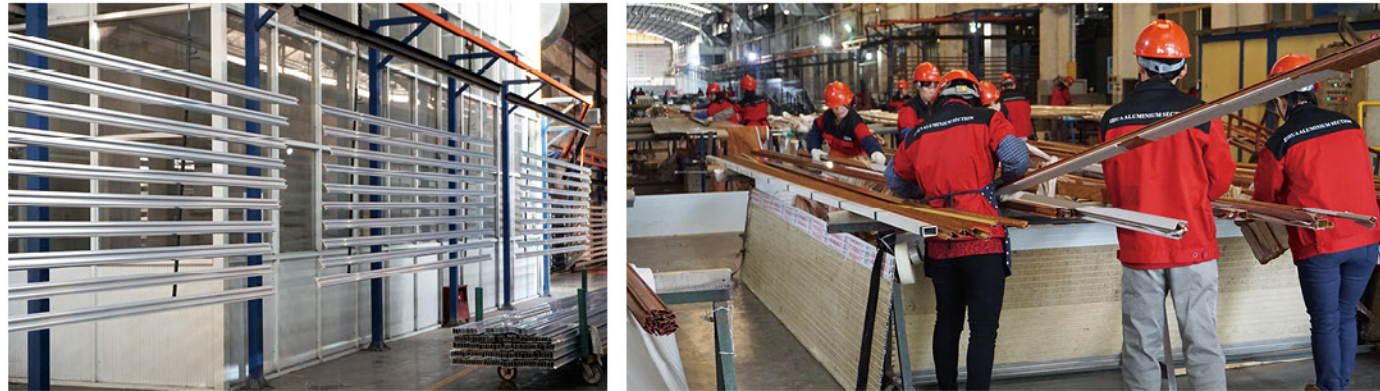
In 2014, O BTAINED " COMMITMENT TO THE INTEGRITY OF ENTERPRISE " OF FOSHAN " .

In 2015, O BTAINED " CHINA ALUMINIUM TEN BRAND AWARD " IN THE TOP THREE. " CHINESE TECHNOLOGY INNOVATION OF ENERGY SAVING AND ENVIRONMENTAL PROTECTION INDUSTRY " TOP TEN BRAND. " NATIONAL SPECIAL SPOT CHECKS QUALITY BENCHMARKING ENTERPRISES " .

In 2016, O BTAINED" SHOU CONTRACT RE-CREDIT " ENTERPRISE BY GUANGDONG FOR 25 YEARS, "QUALICOAT MEMBERSHIP "CERTIFICATE.

ALUMINIUM PRODUCTION CENTRE

铝材生产中心



专注、专心、专业 - 悠久见证

FOCUS ON, CONCENTRATE, PROFESSIONAL - LONG WITNESS



GARDEN EXPERIENCE EXHIBITION HALL

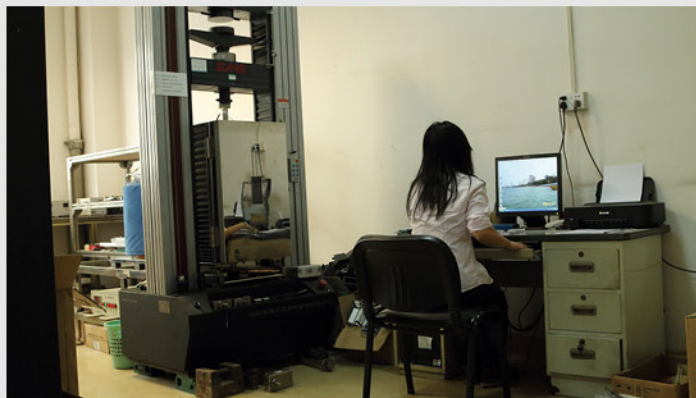
花园式空中体验展厅



TESTING 检测设备 EQUIPMENT



化学分析室 CHENMICA ANALYSIS ROOM



力学性能试验室 MENCHANICAL PROPERTIES CHAMBER



耐候试验室 HUMIDITY TEST RESISTANCE CHAMBER

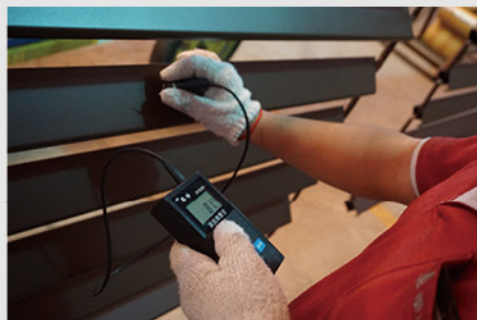


耐湿热试验室 WEATHERING TESTING CHAMBER



盐雾试验箱 SALT SPRAY CHAMBER

TESTING 检测过程 PROCESS



No.	Item	Unit	Standard Requirement	Test Result	Verdict
1	Angle tolerance	°	±0.4	±0.3	Passed
2	Chemical treatment	mm	≥0.30	0.30	Passed
3	Dimension of surface of profile	mm	±0.15	0.15	Passed
4	Radius of corner (R10)	mm	±0.15	0.15	Passed
5	Flatness	mm	±0.1	0.1	Passed
6	Profile thickness	mm	±0.02	±0.02	Passed
7	Vickers hardness (HV)	—	210	210	Passed
8	Rockwell hardness (HR)	—	28	28	Passed
9	Surface roughness (Ra)	μm	3.2	3.2	Passed
10	Chemical treatment	mm	≥0.30	0.30	Passed

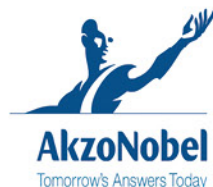
No.	Item	Unit	Standard Requirement	Test Result	Verdict
11	Mg	%	0.05-0.9	0.10	Passed
12	Fe	%	0.05	0.05	Passed
13	Cu	%	0.05	0.05	Passed
14	Zn	%	0.05	0.05	Passed
15	Si	%	0.05	0.05	Passed
16	Mn	%	0.05	0.05	Passed
17	Al	%	99.5	99.5	Passed
18	Chemical composition	—	—	—	Passed
19	Surface treatment	—	—	—	Passed
20	Surface treatment	—	—	—	Passed
21	Surface treatment	—	—	—	Passed
22	Surface treatment	—	—	—	Passed
23	Surface treatment	—	—	—	Passed
24	Surface treatment	—	—	—	Passed

No.	Item	Unit	Standard Requirement	Test Result	Verdict
25	Wear resistance	mm	≥0.8	0.8	Passed
26	Hydrochloric acid resistance	—	—	—	Passed
27	Hydrochloric acid resistance	—	—	—	Passed
28	Change rate of weight	—	—	—	Passed
29	Water resistance	—	—	—	Passed
30	Bulky water resistance	—	—	—	Passed
31	Quality of appearance	—	—	—	Passed



户外十年工程质保

全球战略合作伙伴：阿克苏诺贝尔
全球顶级意大利木纹转印膜：蒙菲斯MENPHIS



1976年, Memphis S.p.a在意大利首先进入转印技术行业, 是印刷和装饰行业里面, 从事发展转印技术的先驱, 一直是LV和GUCCI等奢侈品牌材料战略供应商。历经三十多年的技术研发, 在转印技术领域的大多数方面, 现在已是行业的参考标准。

MENPHIS (蒙菲斯) 公司是生产高级木纹转印膜的欧洲顶级企业。创新的产品和丰富的经验以及MENPHIS获得的成功, 所有的这些结合在一起, 加强了MENPHIS在这个行业的参考地位 (行内以它的质量为标准) 和使它成为世界级的领导者——MENPHIS品牌。

阿克苏诺贝尔粉末涂料事业部是世界最大的粉末涂料供应商。阿克苏诺贝尔公司与意大利蒙菲斯公司合作开发热转印专用粉末涂料和转印膜, 具有转印纹路清晰, 渗透性好, 超耐候等诸多优点。粉末符合AMMA2603-2 (Qualicoat class1) 和AMMA2604-2 (Qualicoat class2) 标准。使用我们的产品, 由阿克苏诺贝尔公司和蒙菲斯公司联合出具10年和15年工程质保证书。

MENPHIS 提供QUALICOAT质量标志认证, 证书号: FS-004
MENPHIS Qualicoat Certificate FS-004



QUALICOAT 国际质量体系保证

- QUALICOAT 质量标志是一套产品质量鉴定的方案。
- QUALICOAT 的使命: 为建材行业提供最佳的实用标准, 以生产出优质的铝喷涂产品。
- QUALICOAT 是铝喷涂产品的世界标准, 质量标志组织, 全球持证工厂须遵照执行。
- QUALICOAT 是 QUALICOAT 在意大利的机构, 是按 QUALICOAT 的规定, 测试和研究建筑铝型材上喷涂和转印的机构。
- QUALICOAT 的优势:
 - + 代表高质量水平
 - + 清楚地规定质量和性能标准
 - + 在世界范围高度公认
 - + 外部控制保证了结果的高度真实性
 - + 被全世界的客户所认可

Interpon D1010



10年漆膜完整性
10年颜色稳定性
10 years film integrity
10 years color integrity
AMMA 2603-2
Qualicoat class 1

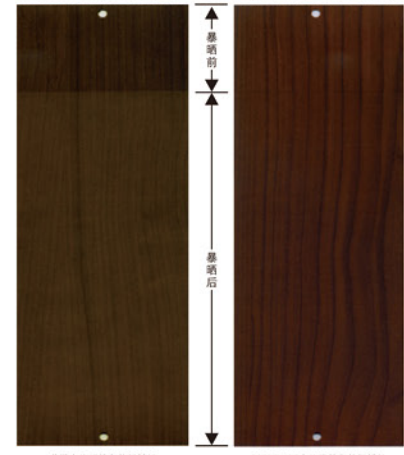
Interpon D2015



15年漆膜完整性
15年颜色稳定性
15 years film integrity
15 years color integrity
AMMA 2604-2
Qualicoat class 2

长期的户外证明:

MENPHIS 木纹转印产品经暴晒后, 光泽和颜色无明显变化, 历久弥新。



户外暴晒测试

自然暴晒测试在户外环境进行, 全世界对这个地点的选择是非常严格和讲究的, 经验表明, 最严峻的环境是海洋和工业, 因而, 佛罗里达州有工业和海洋环境是最好的自然侵蚀测试条件, 暴晒在佛罗里达州, 按照ISO 2810进行, 测量产品光泽和颜色的变化。

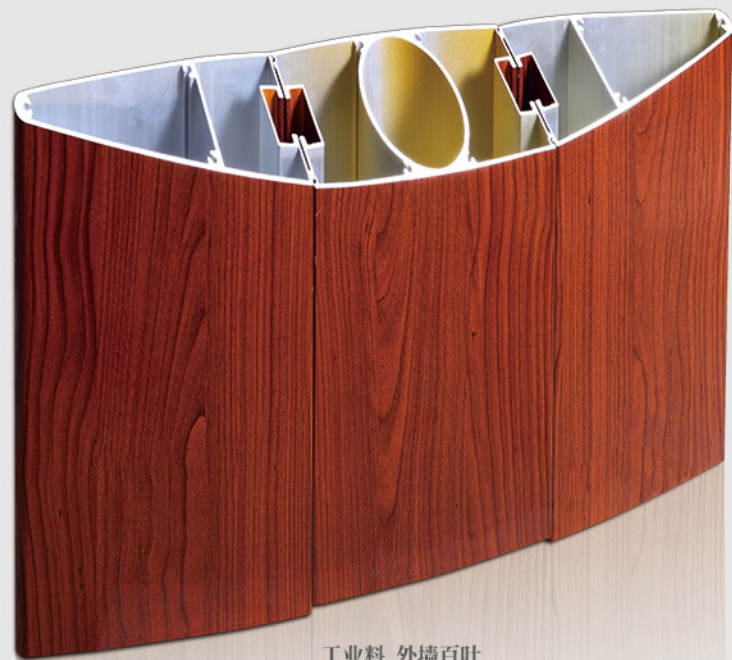
● 全球顶级木纹膜供应商 ● 通过欧标QUALIDECO认证, 户外耐候10年质保 ● 时间印证经典, 经典源于品质

OUR TECHNOLOGY

我们的技术

- 1、历史悠久，铝材质量客户满意！
- 2、参编、参与国家、行业铝材标准；
- 3、采用国际标准产品要求，多国认证；
- 4、经验丰富，研发高性能、人性化、功能化的门窗系统；
- 5、响应国家“火炬计划”立项铝材木纹转印，高新技术企业，工程技术研发中心。

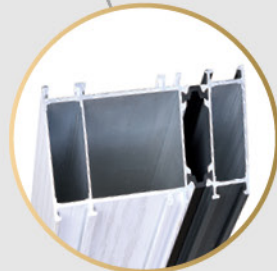
- 1.ALUMINIUM QUALITY CUSTOMER SATISFACTION HAS A LONG HISTORY.
- 2.JOIN IN SETTING UP THE NATIONAL STANDARD
- 3.ADOPT INTERNATIONAL STANDARD PRODUCT REQUIREMENT.MULTI COUNTRY CERTIFICATION.
- 4.DEVELOPING MORE INTELLECTIVE SERIES FOR THE CONSUMERS.
- 5.RESPONSE TO NATIONAL CALLS'TORCH PLAN' PROJECT OF ALUMINIUM TRANSFER GRAIN. ENGINEERING TECHNOLOGY RESEARCH CENTER.



工业料 外墙百叶



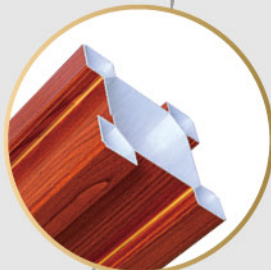
隔热幕墙立柱



隔热窗框料



门扇料



幕墙 阳光房立柱



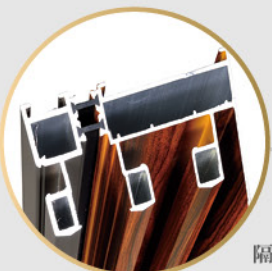
工业料 散热器



工业料



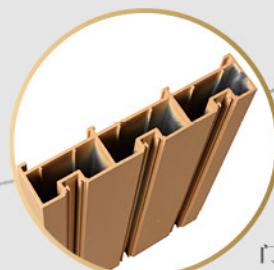
隔热门料



隔热门框料



隔热窗扇料



门框料

WE HAVE THE ADVANTAGE OF 我们的坚持

MANAGEMENT ADVANTAGE 管理优势

* 我们的管理

- 二大原则：“以人为本”原则，重视素质、技能，专心、专业、专注！
“以客户为中心”原则，合作共赢，重视服务
- 三大管理模式：PDCA 作业循环，持续改善；
6S 素养要求，安全文明经营；
7D 执行，有令必行，有禁必止，注重细节，责任到人。

* 我们的创新

- 自主：近三十年产品研发经验，具有开发多功能、高性能门窗系统的优势。
- 优化：客户来样来图，技术人员提供免费兼专业优化服务，让客户无后顾之忧。
- 战略：与高品质配件商形成战略合作伙伴，提供更全面更人性化的门窗系列产品。

* 我们的品质

- 体系：严谨的 ISO 质量体系管理，保证每个生产环节品质保障
- 选材：高纯度 A00 铝锭，国际知名供应商，国际认证材料，严谨的进货品质检验。
- 培训：品牌在心，质量在手，完善的培训体系，员工品质意识高度重视。
- 工艺：高挤压比、恒温恒压恒时，完善且严格的工艺操作与监督管理。
- 检验：严格的品质四检制度（首检、中检、成检、专检），槽液 24 小时全天候检测。
- 颜色：多款式表面处理 and 耐候保质，满足客户需求。

* 我们的服务

- 产品：用心设计，专业创新，智能环保，绿色生活。
- 生产：达到准时，准确，保质供应，并能急用户之所急。
- 体验：高端大气展厅设计
- 互联：网络信息共享，微信资料发布。
- 销售：服务客户，拓展市场，提升增值。
- 系统：从门窗研发、配件配置、铝材生产、门窗检测、经销展示，提供系统化服务。

Manager:

- Two principles:
- *human-oriented:Pay attention to self-cultivation、grasp the skills,Do it by heart so trust it ,Because the focus so professional
 - *Taking customers as the center:Muture-Beneficial Cooperation,Pay attention to service

operations management:

- *Familiar with PDCA improvement system
- *With 6S self-cultivation management,Safe and civilized management
- *We urge patience and meticulous attention to detail and a strong sense of responsibility .

Innovation:

- R&D capacity :Owns 30 years experience on developing and production.
- Service: Free design solution
- Strategy: Establish partner relationship with famous parts suppliers, supply more high quality products
- ISO system : ISO quality system High purity AL ingot,strict QC on the original step
- Selection process: A00 aluminium,Rigorous purchase of merchandise quality restriction
- Training :System make the crew become better
- Technology : Constant temperature and pressure ,high extrusion ratio
- Inspection:Strict procedure,four stepsm 24 hours inspecting on tank liquor
- Colors: Over 50 colors and can OEM colors

Service:

- Products: Design by heart, green life
- Production: On time,at time
- Taste:Design of high end atmosphere exhibition hall
- Internet: We share the info on the website and other ways
- Marketing: Developing and upgrading
- System: Offer whole set wind ows and doors solution



OUR TEAM

我们的团队

FOREIGN 外贸客户 TRADE CUSTOMERS



PRODUCTION 生产经销团队 DISTRIBUTION TEAM



SERVICE TEAM 服务团队

我们有专业的服务团队，为您提供最好的售前，售中，售后服务体验，无论是国内外的客户，都能让您宾至如归。

WE HAVE A PROFESSIONAL SERVICE TEAM, TO PROVIDE YOU WITH THE BEST PRE-SALE, SALE, AFTER-SALES SERVICE EXPERIENCE, BOTH AT HOME AND ABROAD CUSTOMERS, CAN LET YOU FEEL AT HOME.



ATTITUDE DETERMINES EVERYTHING
态度决定一切



GRA143 CASEMENT WINDOW SERIES 隔热窗纱一体平开窗系列

产品名称 隔热窗纱一体平开窗
产品系列 143断桥
铝材颜色 金橡木(可选水曲柳、酸枝木、黄花梨)
五金配件 意大利原装进口

选用意大利进口五金配件，精巧大方。
根据窗型搭配执手，金铜色加出色的造型设计，
高雅、大气、独一无二；
人性化的执手设计产品，流行简洁的设计风格。

PRODUCT NAME
ONE WINDOW CASEMENT WINDOW INSULATION
PRODUCT SERIES
143 BRIDGE
ALUMINIUM COLOR
JINXIANGMU (OPTIONAL A MANCHURIAN ASH, ACID BRANCH
WOOD, YELLOW PEAR)
HARDWARE ACCESSORIES
ITALY ORIGINAL IMPORT SA WEI AO HARDWARE SYSTEM

ITALY IMPORTED HARDWARE ACCESSORIES, DELICATE AND
GENEROUS.
ACCORDING TO THE TYPE OF COLLOCATION WINDOW HANDLE,
OTHER EXCELLENT DESIGN WITH GOLD COPPER,
ELEGANT, ATMOSPHERIC, UNIQUE;
HANDLE PRODUCT HUMANIZED DESIGN, POPULAR AND SIMPLE
DESIGN STYLE.



DA65 CASEMENT WINDOW SERIES

隔热双外开窗纱一体平开窗系列

产品名称 隔热双外开窗纱一体平开窗

产品系列 65断桥

铝材颜色 水曲柳

五金配件 派阁、奋发

新型断桥隔热铝材，采用多道密封胶条封边，气密性好，保温性能优越；

窗扇纱扇都采用外开方式，增大通风面积；

采用新型五金配件，可灵活开启。

PRODUCT NAME

DOUBLE INSULATING OUTSIDE ONE WINDOW CASEMENT WINDOW

PRODUCT SERIES

65 BRIDGE

ALUMINIUM COLOR

A MANCHURIAN ASH

HARDWARE ACCESSORIES

ALEPH, FENFA

NEW TYPE OF INSULATING ALUMINIUM,THE MULTI EDGE SEALING STRIP,GOOD AIR TIGHTNESS;
SUPERIOR THERMAL INSULATION PERFORMANCE;
THE WINDOW SASH YARN FAN ALL USES THE OPEN,INCREASE VENTILATION AREA;
THE USE OF NEW HARDWARE ACCESSORIES, CAN BE FLEXIBLE TO OPEN.



DA70 CASEMENT WINDOW SERIES

隔热三玻内开内倒平开窗系列

产品名称 隔热三玻内开内倒平开窗
产品系列 70断桥
铝材颜色 酸枝木(可选水曲柳、金橡木、黄花梨)
五金配件 意大利原装进口

提炼欧洲艺术精华，融入门窗设计中，
展现出极富创意的设计，配合巧夺天工的工艺，
令您细细品味，感受从细节彰显出来的卓越品质。

PRODUCT NAME
HEAT INSULATION THREE GLASS INTERNAL OPENING CASEMENT WINDOW SERIES
PRODUCT SERIES
70 BRIDGE
ALUMINIUM COLOR
ACID BRANCH WOOD (OPTIONAL A MANCHURIAN ASH, JINXIANGMU, YELLOW PEAR)
HARDWARE ACCESSORIES
ITALY ORIGINAL IMPORT

ESSENCE OF EUROPEAN ART. INTO THE DESIGN OF DOORS AND WINDOWS.
SHOW A VERY CREATIVE DESIGN. WITH THE PROCESS OF ART BEATS NATURE.
TO MAKE YOU TASTE. FEEL THE EXCELLENT QUALITY FROM THE DETAILS.



XM80 SLIDING WINDOW SERIES 推拉窗系列

产品名称 推拉窗
产品系列 80推拉窗
铝材颜色 酸枝木(可选黄花梨、金橡木、水曲柳)
五金配件 意大利原装进口

采用铝合金型材，在技术创新中传承艺术经典，外观漂亮，表面光洁，色泽艳丽牢固，增强了室内外立面的效果，窗户功能性，安全性，舒适性全面展现，简单金色扶手不仅仅只是一种开启配件，和窗户完美的结合，更显示艺术经典，让居室高贵气息永久萦绕。

PRODUCT NAME
SLIDING WINDOW
PRODUCT SERIES
80 SLIDING WINDOW
ALUMINIUM COLOR
ACID BRANCH WOOD (OPTIONAL YELLOW PEAR, JINXIANGMU, A
MANCHURIAN ASH)
HARDWARE ACCESSORIES
ITALY ORIGINAL IMPORT

THE USE OF ALUMINIUM ALLOY PROFILES, IN THE TECHNICAL INNOVATION OF CLASSICAL ART, BEAUTIFUL APPEARANCE, SMOOTH SURFACE, BRIGHT COLOR, STRONG, AND ENHANCE THE EFFECT OF INDOOR AND OUTDOOR ELEVATION, THE WINDOW FUNCTION, SAFETY, COMFORT AND OVERALL SHOW, NOT JUST A SIMPLE GOLD HANDLE OPEN ACCESSORIES, AND THE PERFECT COMBINATION OF WINDOWS, BUT ALSO SHOW THE ART OF CLASSIC, SO THAT THE NOBLE ATMOSPHERE OF THE ROOM FOREVER.





JHB185 SLIDING DOOR SERIES

三轨提升推拉门系列

产品名称 三轨重型推拉门
 产品系列 185推拉门
 铝材颜色 砂灰
 五金配件 意大利原装进口

外观造工精致，豪华大气，欧式意大利时尚风格。
 其框料的宽度有185mm宽，扇料宽度也有110mm宽，整个门看起来结实稳重。
 适用公共建筑、高档住宅小区、别墅；采用优质五金配件耐用，操作手柄人性化设计，美观舒适，开启方便灵活，经过多次试验，滑动轻松自如、无声，再加上执手两点锁的方便性和安全性，成熟完善的加工工艺进行生产，质量稳固。



PRODUCT NAME THREE HEAVY RAIL SLIDING DOOR
 PRODUCT SERIES 185 SLIDING DOOR
 ALUMINIUM COLOR GRAY SAND
 HARDWARE ACCESSORIES ITALY ORIGINAL IMPORT

THE APPEARANCE OF FINE, LUXURIOUS ATMOSPHERE, EUROPEAN STYLE ITALY STYLE. THE WIDTH OF THE FRAME MATERIAL IS 185MM WIDE, 110MM.FAN WIDTH ALSO HAS 110MM WIDTH, THE DOOR LOOKS SOLID.
 APPLICABLE PUBLIC BUILDINGS, HIGH-GRADE RESIDENTIAL AREAS, VILLAS; HIGH QUALITY HARDWARE ACCESSORIES, HUMANIZED DESIGN OF OPERATING HANDLE, BEAUTIFUL AND COMFORTABLE. CONVENIENT AND FLEXIBLE OPENING. AFTER MANY TESTS, EASY TO SLIDE, SILENT. COUPLED WITH THE HANDLE OF THE CONVENIENCE AND SAFETY OF THE TWO LOCK. MATURE AND PERFECT PROCESSING TECHNOLOGY TO PRODUCE. STABLE QUALITY.



XM128 SLIDING WINDOW SERIES

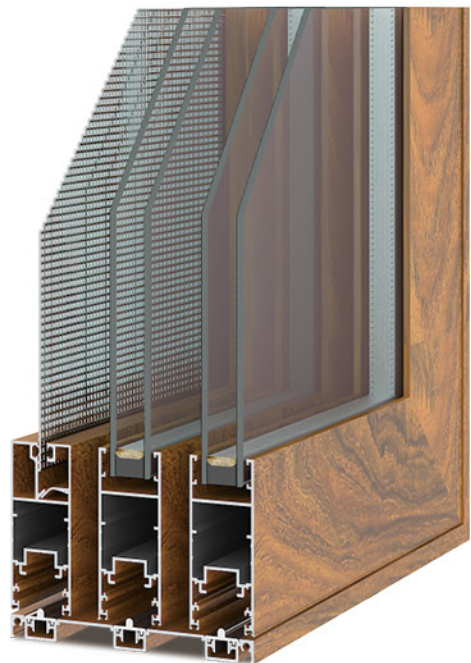
推拉窗系列

产品名称 推拉窗
产品系列 128推拉窗
铝材颜色 香槟金(可选黄花梨、金橡木、水曲柳)
五金配件 意大利原装进口

外观造工精致，豪华大气，欧式意大利时尚风格。
适用公共建筑、高档住宅小区、别墅；采用优质五金配件耐用，操作手柄人性化设计，美观舒适，开启方便灵活，经过多次试验，滑动轻松自如、无声，再加上执手两点锁的方便性和安全性，成熟完善的加工工艺进行生产，质量稳固。

PRODUCT NAME
SLIDING WINDOW
PRODUCT SERIES
128 SLIDING WINDOW
ALUMINIUM COLOR
CHAMPAGNE GOLD (OPTIONAL YELLOW PEAR, JINXIANGMU, A
MANCHURIAN ASH)
HARDWARE ACCESSORIES
ITALY ORIGINAL IMPORT

WORKMANSHIP EXQUISITE, LUXURIOUS ATMOSPHERE, CONTINENTAL ITALIAN
FASHION STYLE. APPLICABLE PUBLIC BUILDINGS, HIGH-GRADE RESIDENTIAL
AREAS, VILLAS; HIGH QUALITY HARDWARE ACCESSORIES, HUMANIZED
DESIGN OF OPERATING HANDLE, BEAUTIFUL AND COMFORTABLE,
CONVENIENT AND FLEXIBLE OPENING, AFTER MANY TESTS, EASY TO SLIDE,
SILENT. COUPLED WITH THE HANDLE OF THE CONVENIENCE AND SAFETY
OF THE TWO LOCK, MATURE AND PERFECT PROCESSING TECHNOLOGY TO
PRODUCE, STABLE QUALITY.



DA108 SLIDING DOOR SERIES

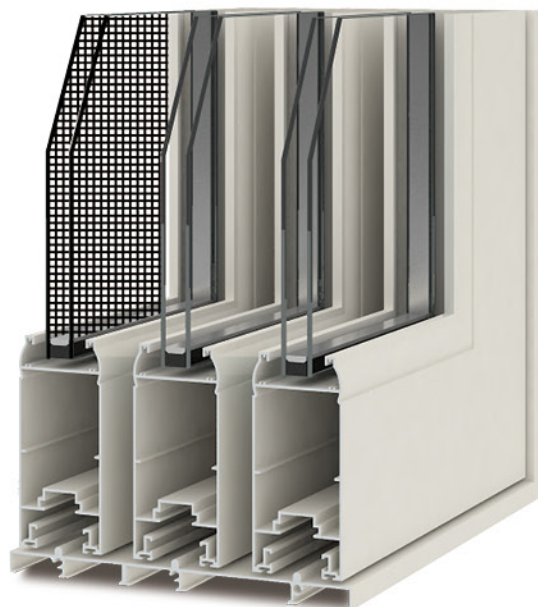
室内三轨带纱推拉门系列

产品名称 室内推拉门
 产品系列 108推拉门
 铝材颜色 樱桃木
 五金配件 室内装饰配件

外观造工精致，豪华大气，欧式意大利时尚风格。
 采用标准欧标槽口设计，使五金搭配更牢固适用，扇料有装饰线和弧形显得美观，下滑采用低平轨或者铜条，减小影响出入问题，还可以根据客户需求外加纱扇，起到防蚊，防虫效果，质量稳定有保障。

PRODUCT NAME SLIDING DOOR
 PRODUCT SERIES 108 SLIDING DOOR
 ALUMINIUM COLOR CHERRY WOOD
 HARDWARE ACCESSORIES INTERIOR DECORATION ACCESSORIES

WORKMANSHIP EXQUISITE, LUXURIOUS ATMOSPHERE,
 CONTINENTAL ITALIAN FASHION STYLE.
 EUROPEAN STANDARD WITH A STANDARD SLOT DESIGN, MAKE
 THE HARDWARE COLLOCATION FIRMER, WITH A DECORATIVE
 MATERIAL APPEAR BEAUTIFUL LINE AND ARC, DECLINE LOW RAIL
 OR COPPER BAR, REDUCE THE IMPACT AND PROBLEMS, CAN ALSO
 ACCORDING TO CUSTOMER REQUIREMENTS WITH GAUZE FAN,
 ANTI-MOSQUITO, INSECT-RESISTANT EFFECT, STABLE QUALITY
 GUARANTEED.



JHB70 PULLING WINDOW SERIES

提拉窗系列

产品名称 提拉窗

产品系列 70提拉窗

铝材颜色 香槟金(可选黄花梨、金橡木、水曲柳)

五金配件 柯威

窗外的阳光,透过玻璃让室内更加明亮宽敞,提拉式的开启方式,为您节省更多空间的同时更便利与日常生活,铝合金型材,耐腐蚀性强,变形量小,装饰性强,经济耐用,是家居门窗的最佳选择。

PRODUCT NAME	PULLING WINDOW
PRODUCT SERIES	70 PULLING WINDOW
ALUMINIUM COLOR	CHAMPAGNE GOLD (OPTIONAL YELLOW PEAR, JINXIANGMU, A MANCHURIAN ASH)
HARDWARE ACCESSORIES	CALDWELL

THE SUNSHINE OUTSIDE THE WINDOW, THROUGH THE GLASS TO MAKE THE ROOM MORE BRIGHT AND SPACIOUS. THE OPEN MEANS OF LIFT TYPE, SAVE MORE SPACE FOR YOU WHILE MORE CONVENIENT AND DAILY LIFE. ALUMINIUM ALLOY PROFILES, STRONG CORROSION RESISTANCE, SMALL DEFORMATION, DECORATIVE STRONG, ECONOMICAL AND DURABLE. IS THE BEST CHOICE FOR HOME DOORS AND WINDOWS.



COLOR DISPLAY

色板展示

季华铝材会打开城市身躯，为你遮风挡雨；
季华铝材也会隐藏自己，为你开阔视野。
而你想要的梦想和梦境，折叠门都会为你创造。

JIHUA aluminium will open city body, for you from the rain;
JIHUA aluminium will hide yourself, open field of vision for you.
And you want to dream and dream, folding door will be created for you.



THE PERFORMANCE

OF Aluminium ALLOY ,THE ANTI-CORROSION,MILDEW,
PEST CONTROL,ANTI UV,ANTI DEFORMATION.

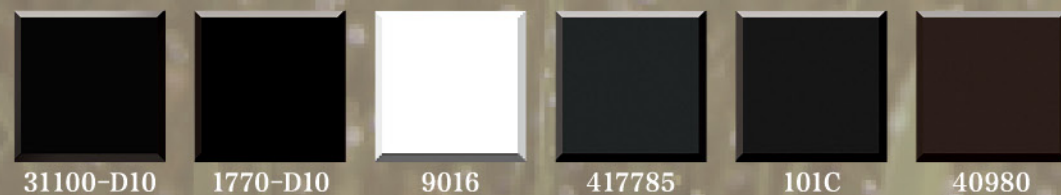
颜色 防腐、防紫外线、抗变形处理，耐用性强

高性能环保涂料，能永久性附着于铝材表层，且具有良好的抗腐蚀性能力、有效防止紫外线、酸雨等侵蚀造成的褪色、变色现象。

High performance environmental protection coatings, can be permanently attached to the surface of the aluminium, and has a good corrosion resistance, effective to prevent UV, acid rain and other erosion caused by the fading, discoloration phenomenon.

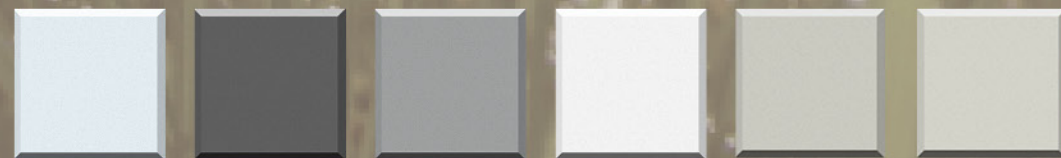
产品颜色可能与实物略有偏差，请以实物为准，图片仅供参考
Product color may be related to physical slightly deviation, please in kind prevail, pictures for reference only

喷涂系列 SPRAY SERIES



31100-D10 1770-D10 9016 417785 101C 40980

氟碳系列 FLUORINE CARBON SERIES



2F14641-J 3F66272-J 3F202653-J 3F65870-S 2F68454-J 2F37631-J

木纹系列 WOOD GRAIN SERIES



樱桃木 Cherry wood 红酸枝7# Red acid branch 7# 黄花梨 Chrysanthemum pear 酸枝3# Acid branch 3# 小叶紫檀 Lobular red sandalwood 水曲柳 Northeast China ash 樱桃木2# Cherry wood2#

氧化电泳系列 OXIDATION ELECTROPHORESIS SERIES

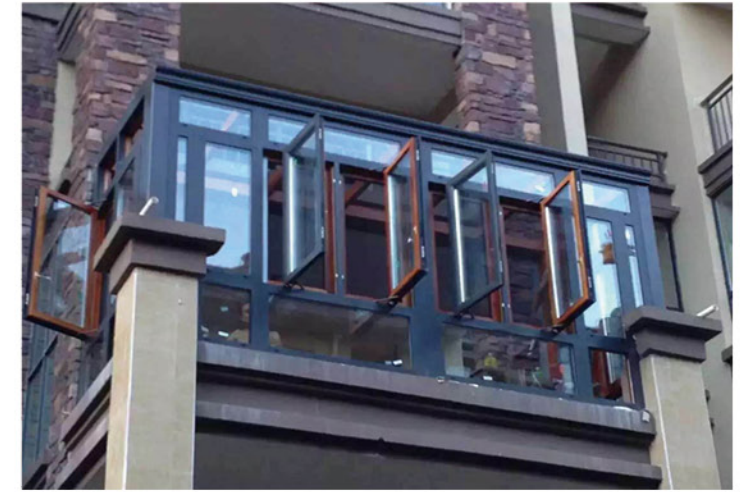


浅古电泳 Shallow bronze electrophoresis 2#电泳 2#Electrophoresis 电泳香槟 Electrophoresis of champagne 苹果金 Golden apple 1#色 1# Silver white 银白 Silvery white 银白喷砂 Silvery white sand

WINDOWS AND DOORS
PROJECT CASE
门窗工程案例



豪华 尊贵
LUXURY
HONOURABLE



舒适 优雅
COMFORTABLE AND
ELEGANT





古典 自然
CLASSICAL NATURAL

